

CORRECTION

Open Access



Correction: NCAPG promotes the oncogenesis and progression of non-small cell lung cancer cells through upregulating LGALS1 expression

Huanhuan Sun^{1,2†}, Hong Zhang^{3†}, Yan Yan^{2†}, Yushi Li², Gang Che², Cuiling Zhou², Christophe Nicot^{4*} and Haiqing Ma^{1,2,3*}

Correction: *Mol Cancer* 21, 55 (2022)
<https://doi.org/10.1186/s12943-022-01533-9>

In the originally published version of this article [1], for Fig. 2I (the bottom row on the right), the label of the 4th lane should be 'H1975' after checking the original records, and the correct label was replaced.

In the originally published version of this article [1], Fig. 4D (the bottom row in the middle), was used incorrectly after checking the original records, and the correct picture was replaced.

Author details

¹Medical Research Center, Guangdong Provincial People's Hospital, Guangdong Academy of Medical Sciences, 106 Zhongshan Er Rd, Guangzhou 510080, Guangdong, China. ²Department of Oncology, The Fifth Affiliated Hospital, Sun Yat-sen University, Zhuhai, China. ³Department of Oncology, Guangdong Cardiovascular Institute, Guangdong Provincial People's Hospital, Guangdong Academy of Medical Sciences, Guangzhou, China. ⁴Department of Pathology and Laboratory Medicine, University of Kansas Medical Center, 3901 Rainbow Boulevard, Kansas City, KS 66160, USA.

Published online: 14 December 2022

Reference

1. Sun H, Zhang H, Yan Y, et al. NCAPG promotes the oncogenesis and progression of non-small cell lung cancer cells through upregulating LGALS1 expression. *Mol Cancer*. 2022;21:55. <https://doi.org/10.1186/s12943-022-01533-9>.

The original article can be found online at <https://doi.org/10.1186/s12943-022-01533-9>.

[†]Huanhuan Sun, Hong Zhang and Yan Yan contributed equally to this work.*Correspondence: cnicot@kumc.edu; mahaiqing@gdph.org.cn

³ Department of Oncology, Guangdong Cardiovascular Institute, Guangdong Provincial People's Hospital, Guangdong Academy of Medical Sciences, Guangzhou, China

⁴ Department of Pathology and Laboratory Medicine, University of Kansas Medical Center, 3901 Rainbow Boulevard, Kansas City, KS 66160, USA
Full list of author information is available at the end of the article



© The Author(s) 2022. **Open Access** This article is licensed under a Creative Commons Attribution 4.0 International License, which permits use, sharing, adaptation, distribution and reproduction in any medium or format, as long as you give appropriate credit to the original author(s) and the source, provide a link to the Creative Commons licence, and indicate if changes were made. The images or other third party material in this article are included in the article's Creative Commons licence, unless indicated otherwise in a credit line to the material. If material is not included in the article's Creative Commons licence and your intended use is not permitted by statutory regulation or exceeds the permitted use, you will need to obtain permission directly from the copyright holder. To view a copy of this licence, visit <http://creativecommons.org/licenses/by/4.0/>. The Creative Commons Public Domain Dedication waiver (<http://creativecommons.org/publicdomain/zero/1.0/>) applies to the data made available in this article, unless otherwise stated in a credit line to the data.

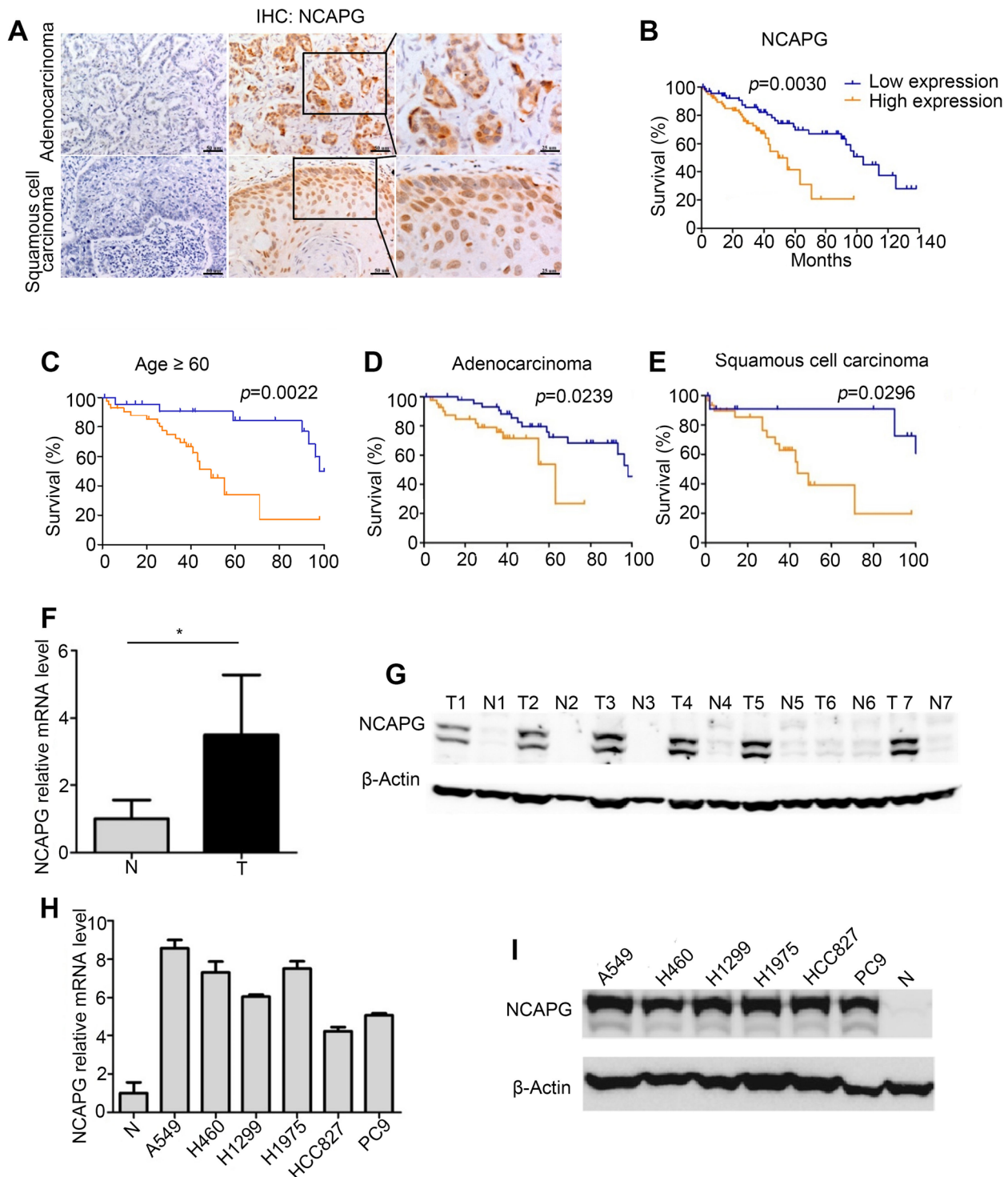


Fig. 2 Overexpression of *NCAPG* in NSCLC tissues and cell lines. **A** *NCAPG* expression in NSCLC tumor tissues by IHC. Left: negative; middle & right: positive; top: adenocarcinoma; bottom: squamous cell carcinoma. **B** The relationship between *NCAPG* expression and survival in NSCLC patients. **C-E** This negative correlation between *NCAPG* expression and survival was identified in elderly patients (≥ 60 years old) ($n = 84$, $p = 0.0022$), adenocarcinoma ($n = 92$, $p = 0.0239$), and squamous cell carcinoma ($n = 43$, $p = 0.0296$). **F, G** *NCAPG* mRNA (**F**) and protein expression (**G**) in NSCLC tumor tissues ($n = 21$) (T: tumor tissues, N: matched adjacent normal tissues). **H, I** *NCAPG* mRNA (N: Average *NCAPG* mRNA expression in adjacent normal tissues ($n = 21$)) and protein (N: Representative protein level of *NCAPG* in adjacent normal tissues) expression in NSCLC cell lines

