

CORRECTION

Correction: Bone-stromal cells up-regulate tumourigenic markers in a tumour-stromal 3D model of prostate cancer

Louisa CE Windus, Tristan T Glover and Vicky M Avery*

Correction

After the publication of this work [1] the authors' informed the journal editors that Figure two (Figure 1 here) (B) is mislabelled and is a replica of Figure three(D). The correct version of Figure two(B) (Figure 1 here) is given below.

We regret any inconvenience that this inaccuracy may have caused.

* Correspondence: v.avery@griffith.edu.au
Discovery Biology, Eskitis Institute for Drug Discovery, Griffith University,
Nathan, 4111, Brisbane, QLD, Canada

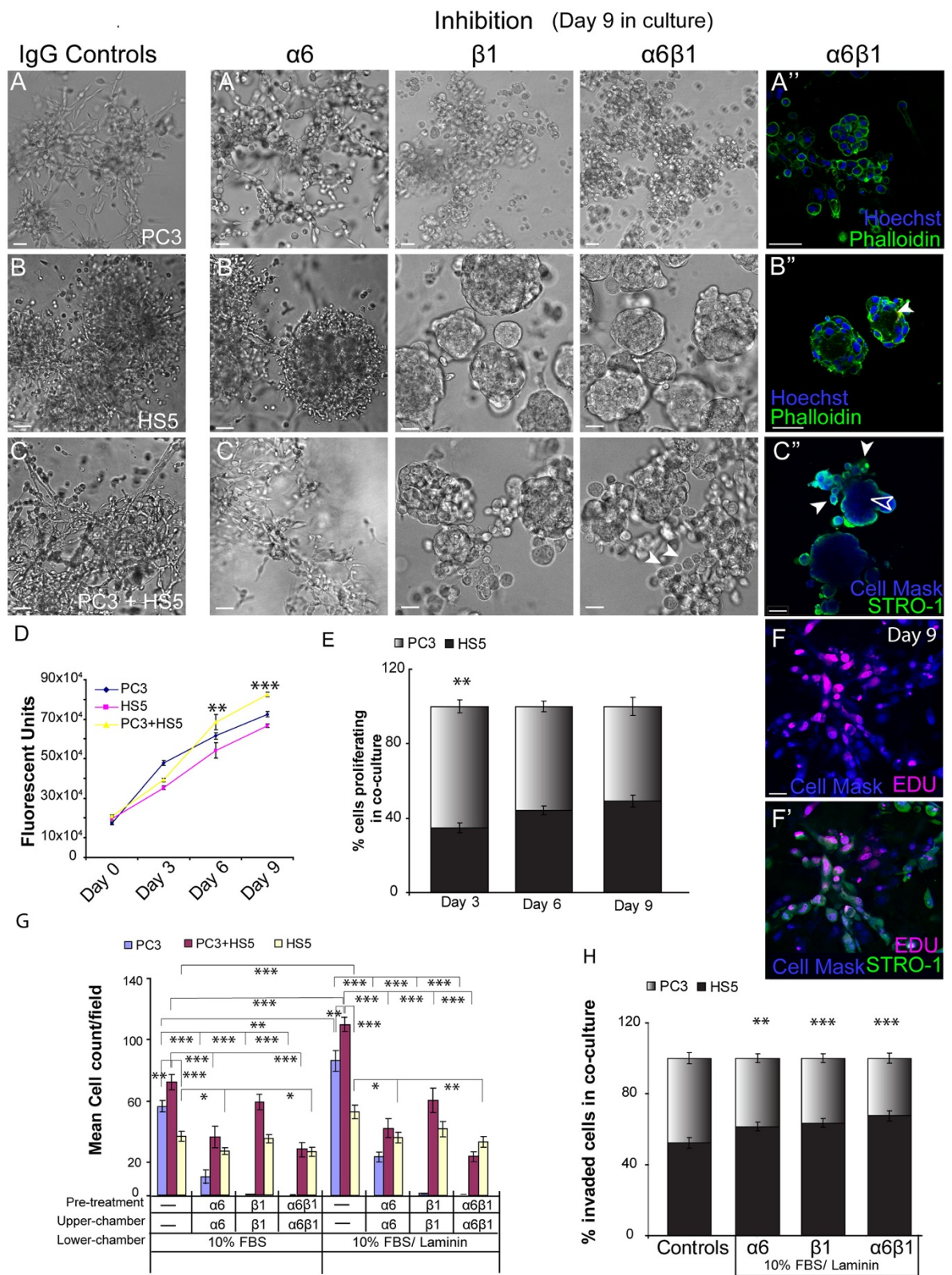


Figure 1 (See legend on next page.)

(See figure on previous page.)

Figure 1 Integrins mediate morphology and invasive qualities of monocultured and co-cultured cells. (A-A'') PC3 cells grown in the presence or absence of either $\alpha 6$, $\beta 1$ or both inhibiting antibodies. (A'') F-actin staining of PC3 cells in 3D culture. **(B-B'')** HS5 cells grown in the presence or absence of either $\alpha 6$, $\beta 1$ or both inhibiting antibodies. (B'') F-actin staining of HS5 cells grown in the presence of both $\alpha 6$ and $\beta 1$ inhibiting antibodies with acini formation (filled arrowhead). **(C-C'')** Co-cultured cells grown in the presence or absence of either $\alpha 6$, $\beta 1$ or both inhibiting antibodies. (C'') In the presence of both $\alpha 6$ and $\beta 1$ inhibiting antibodies, HS5 cells (STRO-1; green fluorescence) localised to the outer edge (filled arrowhead), while the PC3 cells (Cell Mask blue positive; STRO-1 negative) resided in the centre of the spheroid mass (unfilled arrowhead). **(D)** Quantification of the number of proliferating cells in PC3, HS5 and co-cultured cells over a 9 day period. **(E)** Quantification of the percentage of HS5 and PC3 cells proliferating in co-culture over a 9 day period. **(F-F')** EDU labelling (red fluorescence) of HS5 (STRO-1 positive; green fluorescence) and PC3 cells (CellMask blue positive; STRO-1 negative) in co-culture at day 9. **(G)** Quantification of the number of cells to invade in the presence and absence of integrin inhibitors for PC3, HS5 and co-cultured cells. **(H)** Quantification of the percentage of invaded HS5 and PC3 cells in co-culture. (** $p < 0.01$, *** $p < 0.001$). Error bars denote S.E.M. Scale bars = 40 μm .

Received: 24 July 2014 Accepted: 24 July 2014

Published: 8 August 2014

Reference

1. Windus LC, Glover TT, Avery VM: **Bone-stromal cells up-regulate tumourigenic markers in a tumour-stromal 3D model of prostate cancer.** *Mol Cancer* 2013, **12**:112.

doi:10.1186/1476-4598-13-188

Cite this article as: Windus *et al.*: Correction: Bone-stromal cells up-regulate tumourigenic markers in a tumour-stromal 3D model of prostate cancer. *Molecular Cancer* 2014 **13**:188.