

RESEARCH

Open Access

Examination of thromboxane synthase as a prognostic factor and therapeutic target in non-small cell lung cancer

Mary-Clare Cathcart¹, Kathy Gately², Robert Cummins³, Elaine Kay³, Kenneth J O'Byrne², Graham P Pidgeon^{1*}

Abstract

Background: Thromboxane synthase (TXS) metabolises prostaglandin H₂ into thromboxanes, which are biologically active on cancer cells. TXS over-expression has been reported in a range of cancers, and associated with a poor prognosis. TXS inhibition induces cell death *in-vitro*, providing a rationale for therapeutic intervention. We aimed to determine the expression profile of TXS in NSCLC and if it is prognostic and/or a survival factor in the disease.

Methods: TXS expression was examined in human NSCLC and matched controls by western analysis and IHC. TXS metabolite (TXB₂) levels were measured by EIA. A 204-patient NSCLC TMA was stained for COX-2 and downstream TXS expression. TXS tissue expression was correlated with clinical parameters, including overall survival. Cell proliferation/survival and invasion was examined in NSCLC cells following both selective TXS inhibition and stable TXS over-expression.

Results: TXS was over-expressed in human NSCLC samples, relative to matched normal controls. TXS and TXB₂ levels were increased in protein ($p < 0.05$) and plasma ($p < 0.01$) NSCLC samples respectively. TXS tissue expression was higher in adenocarcinoma ($p < 0.001$) and female patients ($p < 0.05$). No significant correlation with patient survival was observed. Selective TXS inhibition significantly reduced tumour cell growth and increased apoptosis, while TXS over-expression stimulated cell proliferation and invasiveness, and was protective against apoptosis.

Conclusion: TXS is over-expressed in NSCLC, particularly in the adenocarcinoma subtype. Inhibition of this enzyme inhibits proliferation and induces apoptosis. Targeting thromboxane synthase alone, or in combination with conventional chemotherapy is a potential therapeutic strategy for NSCLC.

Introduction

Lung cancer is the leading cause of cancer related death in the developed world, accounting for 12% of deaths worldwide [1]. Median survival for the majority of patients with advanced non-small cell lung cancer (NSCLC) is 18 months and 9 months for locally advanced or metastatic disease respectively [2]. Current therapeutic strategies are relatively ineffective, which is reflected by an overall survival rate of just 15% [3].

Arachidonic acid (AA) can be converted to various eicosanoids by enzymes such as cyclooxygenase (COX), lipoxygenase (LOX), or epoxygenases (cytochrome P-450). The

cyclooxygenase enzymes consist of two isoforms, COX-1 and COX-2, which catalyze the first step in the generation of downstream prostanoids from arachidonic acid [4]. COX-derived prostanoids are involved in a wide range of physiological processes, but have also been implicated in a range of disease states, such as arthritis, heart disease, and pulmonary hypertension [5]. In the past number of years, there has been significant interest in the role of COX-2 in cancer development and progression. Expression of this enzyme has been associated with a poor prognosis in lung cancer [6-8], while a potential role for COX-2 in lung cancer chemoprevention has been investigated in a number of clinical trials [9-11]. However, chronic administration of high concentrations of selective COX-2 inhibitors has been associated with an increased risk of adverse cardiovascular events [12-14]. Recent studies suggest that the

* Correspondence: pidgeong@tcd.ie

¹Department of Surgery, Institute of Molecular Medicine, Trinity Health Sciences Centre, St. James's Hospital, Dublin 8, Ireland
Full list of author information is available at the end of the article

tumour-promoting effects of COX-2 over-expression may be attributable to downstream products of AA metabolism. Increased COX-2 expression is associated with increased levels of downstream enzymes required for prostanoid synthesis, such as prostaglandin E₂ synthase (PGE-S), prostaglandin D₂ synthase (PGD-S), and thromboxane A₂ synthase [15]. However, the relationship of prostanoid profile to cancer growth is not fully understood.

Thromboxane synthase (TXS) activity was first described in platelets [16]. The enzyme was later purified as a 60 kDa hemoprotein with spectroscopic characteristics of the cytochrome P-450 family [17]. TXS metabolises the cyclooxygenase product, prostaglandin H₂, into thromboxanes, which are biologically active on cancer cells. TXA₂ is a potent vasoconstrictor and bronchoconstrictor, as well as a potent promoter of platelet aggregation [18,19]. TXS and its product, TXA₂, have been shown to promote proliferation, invasion, metastasis and angiogenesis in a variety of cancers [20-24]. TXS over-expression has been reported in thyroid, prostate, colorectal, and bladder cancer [20-22,24,25]. Over-expression of this enzyme has been associated with a significant reduction in survival in bladder cancer [21]. In addition, analysis of prostate tumour specimens revealed increased TXS levels in patient samples of advanced stage and grade [22,25]. Thromboxane synthase expression has been associated with tumour growth in a variety of cancers, both *in-vivo* and *in-vitro* [21,24,26,27]. A number of these studies have demonstrated a significant reduction in tumour cell growth following selective TXS inhibition [21,24,26], suggesting that targeting this enzyme may have therapeutic efficacy in cancer. Specific thromboxane synthase inhibition has been shown to induce apoptosis, providing a further rationale for therapeutic intervention [26,28].

While the expression and role of thromboxane synthase has been examined in a number of cancers and has demonstrated significant promise, this enzyme has not yet been investigated in NSCLC. Due to the clear role of COX-2 in NSCLC pathogenesis, investigation of the downstream TXS enzyme would be of significant interest and relevance. The aim of this study was therefore to examine the expression profile of thromboxane synthase in NSCLC, relative to matched controls. We aimed to correlate TXS expression patterns with a range of clinical parameters, including overall survival (to determine if it is prognostic in the disease). Finally, we also wished to examine the effect of both TXS inhibition and TXS overexpression on *in-vitro* NSCLC survival mechanisms.

Methods

Patients and tumour specimens

Patients who had received primary chemotherapy (neoadjuvant) treatment were excluded from this study.

For protein analysis, a series of 26 fresh-frozen NSCLC specimens (13 Adenocarcinomas and 13 Squamous Cell Carcinomas) with corresponding matched normal tissue from the same individual were collected at surgery at St. James's Hospital. All samples were evaluated by a pathologist immediately following dissection.

For generation of a NSCLC tissue microarray (TMA), paraffin blocks from 204 patients who underwent chemotherapy with surgical resection at St. James's Hospital (2000-2005) for NSCLC of varying histology, stage, and grade were collected. Patients who underwent pre-operative chemotherapy, or were found to have stage IV disease were excluded. Patient tumours were staged according to the tumour-node-metastasis (TNM) classification and histologically classified according to the World Health Organization guidelines. The NSCLC tissue samples were classified as 1) adenocarcinoma, 2) squamous cell carcinoma, and 3) others. Patients range in age from 41 years to 86 years. Patients were followed up by the tumour registries for survival time and outcome with median follow-up of 60 months (ranging from 1 to 88 months).

Generation of NSCLC tissue microarrays

Tissue microarrays were assembled using a tissue arraying instrument (Beecher Instruments, Silver Spring, MD). A 3 mm diameter stylet was used for sampling, with three replicate core samples of tumour taken from different regions in each donor block to account for tumour heterogeneity. Four μ M sections of the resulting microarray blocks were cut on a microtome (Leica Microsystems Inc., IL, USA) and dried onto poly-L-lysine-coated glass slides (BDH Laboratory Supplies, Poole, England).

RNA isolation and reverse-transcription PCR analysis

A-549 and SKMES-1 cells for RNA analysis were collected in 1 mL of Tri-Reagent (Molecular Research Center, OH, USA). Total RNA was subsequently isolated according to manufacturers' instructions. RNA quantification was determined spectrophotometrically (Nanodrop technologies, DE, USA), with RNA concentration subsequently used to carry out cDNA synthesis (reverse-transcription). First strand cDNA was prepared using Superscript III according to the manufacturers' instructions (Invitrogen Corporation, CA, USA). cDNA was generated using random primers (Promega, WI, USA), and synthesis reactions were carried out for 3 h at the appropriate temperature. Expression of TXS and β -actin was examined by RT-PCR using previously published primers [20,29].

PCR cycling conditions were as follows:

β -actin: 95°C for 5 min, followed by 35 cycles of (1 min at 94°C, 1 min at 56°C, 1 min at 72°C), with a final extension at 72°C for 10 min.

TXS: 94°C for 5 min, followed by 35 cycles of (30 s at 94°C, 30 s at 55°C, 45 s at 72°C) with a final extension at 72°C for 10 min.

β -actin levels were utilized as the internal loading control for each sample analysed.

Western blot analysis

Primary tissue protein lysates were extracted from NSCLC specimens and matched normal lung tissue using Tri-Reagent (MRC), according to the manufacturers' instructions. Protein samples (25 μ g) were separated by pre-cast SDS-PAGE and transferred to PVDF membranes. Membranes were probed overnight at 4°C with a primary antibody directed against thromboxane synthase (1:250 dilution, Cayman, Michigan, USA). Following probing, blots were stripped and re-probed for β -actin (1:20,000, Merck Biosciences, Germany) to normalize for loading differences. Densitometric analysis was carried out on all TXS tumour/normal matched western blots and corresponding β -actin controls. Analysis was carried out using TINA (version 4.0) software (Raytest, Germany). Protein expression was normalized to β -actin controls, and was expressed as a ratio of TXS expression: β -actin expression.

Immunohistochemical staining

COX-2 and TXS staining of NSCLC tissue was carried out manually using Vectastain Elite Kits (Vector labs, Burlingame, CA, USA). Immunostaining was carried out using a rabbit polyclonal IgG specific for COX-2 (1:600 dilution, Cayman Chemical), or a rabbit polyclonal IgG specific for TXS (1:500 dilution, Cayman Chemical). Slides were incubated in the primary antibody for 1 h at room temperature (COX-2), or overnight at 4°C (TXS). Staining was visualised using a ScanScope GL digital slide scanner and Aperio ImageScope software (Aperio Technologies Inc., CA, USA).

Quantification of staining intensity

Staining in NSCLC tissue micro-array tissue was blindly scored and quantified by three independent observers (M.C.C., K.G. and G.P.). Expression levels within tumour tissue was quantified across three representative cores per patient as a product of the staining intensity (0 = negative, 1 = weak, 2 = moderate, 3 = strong) x percentage cells stained (< 25%, < 50%, < 75%, < 100%). Staining intensity was quantified under high magnification (x 20), using Aperio Image Scope software (Aperio Technologies). Expression patterns were correlated with a range of clinical parameters such as patient demographics (gender), tumour classifications (tumour subtype, stage, grade, and nodal status) and overall survival.

Enzyme immunoassay analysis of metabolite generation

Plasma levels of TXB₂ (thromboxane A₂ metabolite) were measured in a retrospective panel of NSCLC plasma samples and age-matched controls (50 chemo-naive patient samples, 19 cancer-free controls). Control samples were taken from patients with no known history of cancer. Plasma samples were isolated from whole blood by centrifugation at 3,000 \times g for 10 min. Enzyme immunoassay kits (Assay Designs, MI, USA) were used to determine TXB₂ levels in plasma isolated from NSCLC patients and age-matched controls. The assay was carried out according to manufacturers' instructions.

In-vitro experiments

Cell culture and chemicals

Two lung cancer cell lines, A-549 (adenocarcinoma) and SKMES-1 (squamous cell carcinoma) were obtained from the American Type Culture Collection (Rockville, MD, USA). They were maintained in a humidified atmosphere of 5% CO₂ in air at 37°C. A-549 cells were maintained in F-12 (Hams) medium, supplemented with 10% (v/v) foetal bovine serum (FBS), penicillin streptomycin, and L-glutamine. SKMES-1 cells were maintained in Modified Eagle's Medium + Earle's medium (MEM), supplemented with 10% (v/v) FBS, penicillin streptomycin, L-glutamine and non-essential amino acids. Subculturing was carried out when the cells reached 80% confluency. The selective thromboxane synthase inhibitor, ozagrel, was obtained from Cayman.

Generation and characterisation of stable transfectant clones

Human TXAS cDNA was a gift from Prof. Kenneth V. Honn (Wayne State University, Detroit, MA, USA). A 1.5 Kb DNA fragment containing the entire TXAS coding sequence was digested from pBluescript plasmid DNA and inserted into the site of the mammalian vector pcDNA3.1(-) (Invitrogen Corporation, CA, USA) to generate pcDNA3.1(-)-TXAS. The two mammalian vector constructs were individually transfected into SKMES-1 cells. Stable transfection of vector constructs were carried out using FuGENE 6™ transfection reagent (Roche Diagnostics Ltd., Sussex, UK). Approximately 3 \times 10⁵ cells were cultured in their respective supplement-free medium. Cells were then transfected with either 1 μ g pcDNA-TXS/3.1(-), or pcDNA-3.1(-) (control vector) in antibiotic-free media, containing 3 μ L/mL FuGENE 6™, according to manufacturers' instructions. Following transfection, cells were further incubated for 24 h at 37°C. Antibiotic selection was then carried out by treating the cells with Geneticin G-418 (800 μ g/mL).

Following seven days of antibiotic selection, single cell colonies were selected and amplified. RNA and protein was isolated from amplified clones in order to examine relative TXS expression levels. The TXS clone with the highest TXS expression level was chosen for further analysis (along with corresponding empty vector control cells).

Cell proliferation analysis

A-549 and SKMES-1 lung cancer cells were seeded at a concentration of 5×10^3 /well into 96-well plates and allowed to adhere at 37°C overnight. Following overnight incubation in serum-depleted media, cells were treated for 24 h with and without various concentrations (50 nM, 500 nM, 5 µM) of a selective thromboxane synthase antagonist (Cayman). Cell proliferation was then assessed by BrdU cell proliferation assay, according to the manufacturers' instructions (Roche).

Annexin-V-FITC/Propidium Iodide Apoptosis Assay

Cells were seeded in 6-well plates (at a dilution of 2.5×10^4 , or 5×10^4 cells/well), which were allowed to adhere at 37°C overnight. Following this, cells were incubated for 48 h or 72 h in serum-depleted media (0.5% FBS). Cells and supernatants were then collected and transferred into flow tubes (BD Biosciences, MA, USA) for annexin-V-FITC apoptosis analysis by flow cytometry (FACS). Cells were prepared for FACS analysis according to manufacturers' instructions (Roche). Apoptosis levels were measured using a FACS Caliber flow cytometer (BD Biosciences), with data analysis carried out using dot plot analysis.

High content screening analysis

The effects of selective thromboxane synthase inhibition on apoptosis in A-549 and SKMES-1 cell lines was also examined by High Content Screening using the GE Analyser 1000 (GE/Amersham Biosciences, NJ, USA). Briefly, A-549 and SKMES-1 lung cancer cells were set-up in 96-well plates, and treated as previously described. Following treatment, a Multi-Parameter Apoptosis Hit-Kit was used to assess three fundamental parameters related to apoptosis (nuclear morphology, mitochondrial mass/membrane potential and changes in *f*-actin content), according to manufacturers' instructions (Cello-mics Inc., PA, USA). Stained plates were sealed and run on a GE Analyser 1000.

Cell death detection ELISA and DNA laddering

A-549 and SKMES-1 lung cancer cells were seeded at a concentration of 5×10^4 /well into 12-well plates and allowed to adhere at 37°C overnight. Following overnight incubation in serum-depleted media, cells were treated for 24 h with and without various concentrations

of the selective TXS antagonist, ozagrel (Cayman). The generation of cytoplasmic histone-associated DNA fragments (mono- and oligo nucleosomes) following apoptosis was then measured by Cell Death Detection ELISA (Roche). Sample preparation and the ELISA procedure were both carried out according to manufacturers' instructions. A similar experimental setup was carried out in 75 cm² flasks, and apoptosis confirmed by DNA laddering analysis using a DNA-laddering kit (Roche).

Cell invasion assay

Tumour cell invasion was examined using a 96-well Cell Invasion Assay (Chemicon International, CA, USA). Briefly, 1×10^5 cells in 100 µL serum-free media were added per well to an invasion chamber, which had previously been rehydrated with serum-free media. The 96-well plate was then covered and incubated for 24 h at 37°C. Invasion analysis was then carried out according to manufacturers' instructions.

Statistical analysis

Statistical comparison of expression levels of these enzymes between tumour and matched control protein, and plasma samples was calculated using a 2-tailed Students *t*-test. Correlation analysis was carried out using a Linear (Pearson) Correlation test. Association between clinicopathological features and expression of these enzymes was assessed using a 2-tailed Students *t*-test for continuous data. Overall survival was examined using Kaplan-Meier's survival curves, with differences in survival assessed by the log-rank test. Statistical analysis for *in-vitro* experiments was carried out using ANOVA, with post-hoc analysis carried out using Tukey-Kramer multiple comparisons test. Results are expressed as mean ± SEM, with data taken as significant where $p < 0.05$. All statistical analysis was carried out using InStat Statistical Software Package version 3.0 with survival analysis carried out using SPSS version 16.0 (SPSS Inc., Chicago, IL, USA).

Results

Thromboxane synthase expression in retrospective NSCLC protein samples, relative to matched normal controls

Examination of TXS expression in a panel of NSCLC protein samples revealed an over-expression of TXS in tumour samples, relative to matched normal controls (Figure 1A). Densitometric analysis confirmed these observations, with TXS expression significantly ($p < 0.05$) higher in tumour samples, relative to matched normal controls (0.81 ± 0.1 tumour vs. 0.52 ± 0.06 normal, Figure 1B). When broken into tumour subtype, increased TXS expression was observed in 77% of adenocarcinoma (0.74 ± 0.1 tumour vs. 0.54 ± 0.08 normal, not significant, $p = 0.08$) and 77% of squamous cell carcinoma (0.88 ± 0.19 tumour vs. 0.5 ± 0.1 normal, $p < 0.05$) samples screened (data not

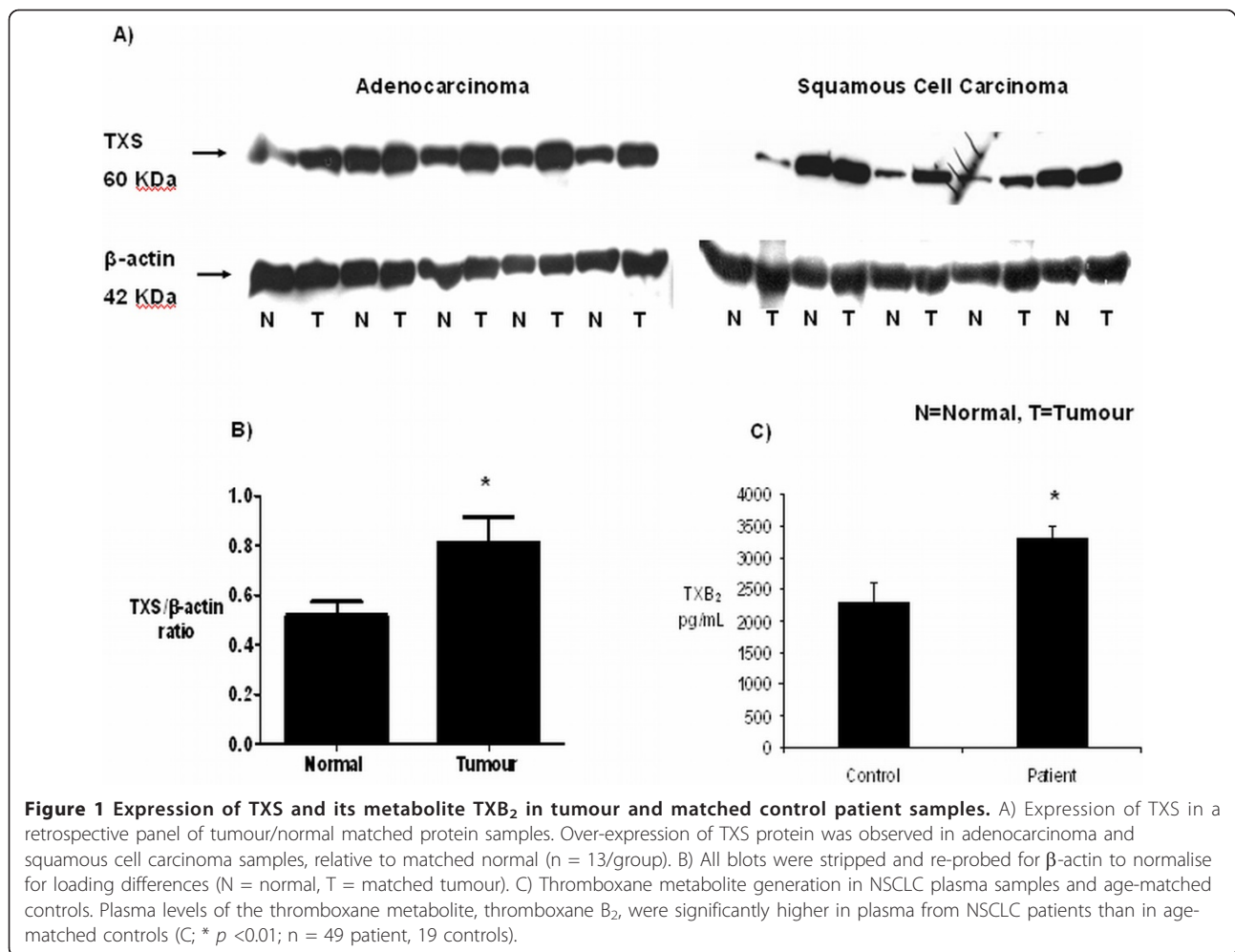


Figure 1 Expression of TXS and its metabolite TXB₂ in tumour and matched control patient samples. A) Expression of TXS in a retrospective panel of tumour/normal matched protein samples. Over-expression of TXS protein was observed in adenocarcinoma and squamous cell carcinoma samples, relative to matched normal (n = 13/group). B) All blots were stripped and re-probed for β-actin to normalise for loading differences (N = normal, T = matched tumour). C) Thromboxane metabolite generation in NSCLC plasma samples and age-matched controls. Plasma levels of the thromboxane metabolite, thromboxane B₂, were significantly higher in plasma from NSCLC patients than in age-matched controls (C; * *p* < 0.01; n = 49 patient, 19 controls).

shown). These results indicate that thromboxane synthase expression is increased in a significant proportion of patients with NSCLC.

Thromboxane A₂ metabolite levels in NSCLC plasma samples and age-matched controls

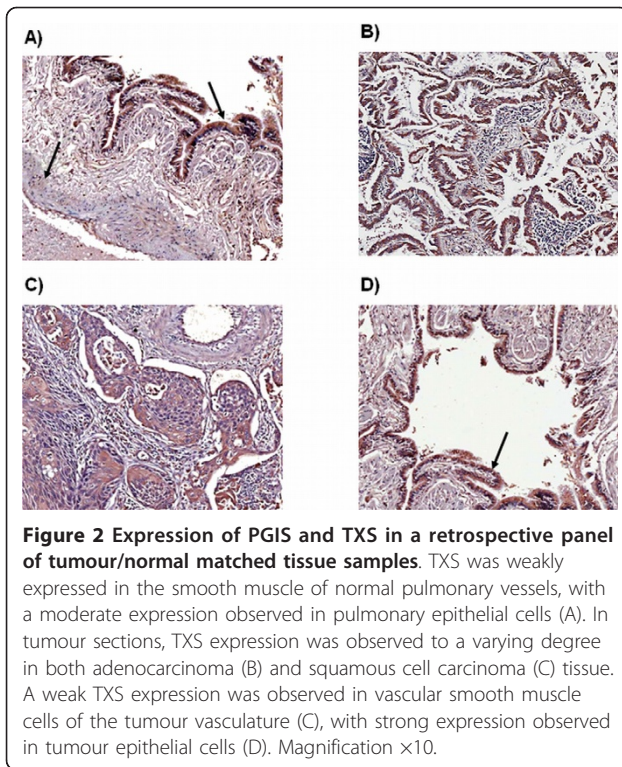
As thromboxane synthase was increased in our retrospective panel of tumour/normal matched NSCLC protein samples, we wished to determine if this increase in expression at the protein level would be reflected in the downstream generation of the TXA₂ metabolite, TXB₂. TXB₂ levels were measured in a panel of NSCLC plasma samples and age-matched cancer-free controls by enzyme immunoassay (EIA). Measurement of TXB₂ levels in human plasma would be indicative of circulating levels in the blood. Thromboxane B₂ levels were found to be significantly (*p* < 0.01) higher in plasma samples taken from patients with NSCLC, relative to age-matched controls (3307 ± 189 pg/mL versus 2207 ± 317 pg/mL; n = 49 NSCLC patient, 19 cancer-free controls; Figure 1C), supporting previous observations at the protein level.

Examination of the thromboxane synthase expression pattern in NSCLC tissue samples and matched normal controls

A panel of retrospective lung tumour (adenocarcinoma and squamous cell carcinoma) and matched normal tissue sections were stained by IHC for thromboxane synthase to determine localisation of tissue expression (n = 10 adenocarcinoma and 10 squamous cell carcinoma). TXS was found to be weakly expressed in vascular smooth muscle cells and moderately expressed in pulmonary epithelial cells of normal tissue (Figure 2A). In matched tumour sections, TXS was found to be expressed to a varying degree in both adenocarcinoma (Figure 2B) and squamous cell carcinoma tissue (Figure 2C). In the tumour supplying vessels, TXS expression was strong in bronchial epithelial cells (Figure 2D).

Tissue microarray analysis of COX-2 and thromboxane synthase in NSCLC: correlation with clinical parameters

A 204-patient NSCLC tissue microarray generated using patients presenting to St. James's Hospital, Dublin, was



stained for both COX-2 and TXS expression. COX-2 was expressed to a varying degree in NSCLC tumour tissue. A large number (approximately 30%) of patient samples were found to be negative for COX-2 expression. However, COX-2 expression was detected in a majority of patient samples, where it was found to be highly localised to specific areas of the tumour tissue. Quantification of COX-2 expression levels revealed COX-2 expression was significantly ($p < 0.05$) higher in adenocarcinoma tissue, relative to squamous. A significantly ($p < 0.05$) higher expression was also detected in female patients. COX-2 expression was not found to be correlated with either tumour stage or nodal status in our patient cohort, although a significant ($p < 0.05$) difference in expression was observed between grade 2 and grade 3 tumours. Correlation of COX-2 expression with 5-year patient survival revealed no significant correlation with overall survival, although a clear trend was observed for reduced survival in patients with high COX-2 expression ($p = 0.2$). However, COX-2 expression was significantly ($p < 0.01$) associated with short-term (2-year) survival in our patient cohort, suggesting that this enzyme is prognostic in our study, at least for shorter-term survival (results shown in Table 1).

NSCLC TMA analysis of thromboxane synthase expression revealed similar observations to those of COX-2 analysis. TXS expression levels were significantly ($p < 0.001$) higher in adenocarcinoma patients, relative to squamous

cell carcinoma. Expression was also significantly ($p < 0.05$) higher in female patients. TXS expression did not correspond with either tumour stage or nodal status. However, expression levels were significantly ($p < 0.05$) lower in grade 3 tumours, relative to grade 2. No correlation of TXS expression with patient survival was observed. It has been established that TXS activity (and subsequent TXA_2 generation) is dependent on COX-2 expression to supply the PGH₂ substrate [22]. It may therefore be of importance to examine a potential role for COX-2 expression in combination with TXS expression in patient survival. Combined analysis revealed COX-2 expression to be significantly ($p < 0.0001$) correlated with that of TXS, with an r value of 0.34 (data not shown). However, no correlation of TXS expression in combination with high COX-2 with patient survival was observed, suggesting that thromboxane synthase is not a prognostic factor in NSCLC (results shown in Table 1).

Thromboxane synthase expression in NSCLC cell lines: effects of selective inhibition on tumour cell growth

Two lung cancer cell lines-A-549 (adenocarcinoma) and SKMES-1 (squamous cell carcinoma)-were screened for TXS expression by both RT-PCR (Figure 3A) and western analysis (Figure 3B). A modest basal expression of both TXS mRNA and protein was observed in both cell lines, although mRNA expression in A-549 cells was higher than that in SKMES-1. The effect of 24 h selective thromboxane synthase inhibition with ozagrel on tumour cell proliferation/survival was then examined in both cell lines by BrdU cell proliferation assay. A significant ($p < 0.05$) reduction in tumour cell proliferation/survival was observed in A-549 cells following treatment with 5 μM ozagrel, relative to untreated controls ($79 \pm 0.5\%$ ozagrel vs. 100% untreated). A non-significant reduction in tumour cell proliferation/survival was also observed in these cells following treatment with 50 nM ($85 \pm 0.03\%$) and 500 nM ($83 \pm 0.04\%$) ozagrel, relative to controls (Figure 3C). A significant ($p < 0.05$) reduction in tumour cell proliferation/survival was observed in SKMES-1 cells following 24 h treatment with 500 nM ($86 \pm 0.01\%$) and 5 μM ($78 \pm 0.02\%$) ozagrel, relative to untreated controls (Figure 3D).

Tumour cell apoptosis is increased following selective thromboxane synthase inhibition

In order to further examine the effect of TXS inhibition on tumour cell survival pathways, High Content Screening Analysis of NSCLC cells was carried out following treatment. Multiparameter analysis of apoptosis signalling was assessed in both NSCLC cell lines following 24 h selective TXS inhibition using the GE In Cell Analyser. The Multiparameter Apoptosis HitKit from Cello-mics provides High Content Screening qualified

Table 1 Correlation of NSCLC TMA staining with clinical parameters

	COX-2 Staining Intensity (Mean ± SEM units)	p-Value	TXS Staining Intensity (Mean ± SEM units)	p-Value
Gender				
(n = 124) Male	28.9 ± 3.7	0.03	81.9 ± 3.4	0.04
(n = 73) Female	36.8 ± 4.1		98.6 ± 9.6	
Tumour Subtype				
(n = 83) Adenocarcinoma	39.5 ± 4.9	0.02	119 ± 7	< 0.0001
(n = 92) Squamous Cell Carcinoma	25.9 ± 3.7		58.9 ± 5.5	
Tumour Stage				
(n = 105) Stage 1	33.1 ± 3.5	0.51	93.3 ± 7.5	0.7
(n = 43) Stage 2	35 ± 8.2		82.7 ± 9.3	
(n = 43) Stage 3	26.9 ± 5		90 ± 9.7	
Tumour Grade				
(n = 13) Grade 1	27.4 ± 8.2	0.02	104.7 ± 21.7	0.02
(n = 106) Grade 2	38.9 ± 4.4		98 ± 6.4	
(n = 64) Grade 3	26.9 ± 5		70.4 ± 6.7	
Nodal Status				
(n = 119) Node Negative	35 ± 3.9	0.22	91.7 ± 6.3	0.4
(n = 79) Node Positive	27.6 ± 3.7		83.2 ± 7.1	
2-Year Survival (months)				
(n = 92) ≤ median value	21.8 ± 0.61	0.008	N/A	N/A
(n = 95) ≥ median value	18.8 ± 0.8			
Overall Survival (months)				
(n = 99) ≥ median value	47.4 ± 3.8	0.2	58.5 ± 3.6 months	0.32
(n = 98) ≤ median value	54.2 ± 3.2		52.2 ± 3.7 months	
COX-2/TXS Combined Overall Survival (months)				
(n = 22) High COX-2/Low TXS	N/A	N/A	45.5 ± 7.9 months	0.38
(n = 51) High COX-2/High TXS			54.1 ± 5 months	

Expression profile of COX-2 and TXS in a 204-patient NSCLC TMA: correlation with clinical parameters. Expression levels of COX-2 and TXS in NSCLC TMAs were correlated with a range of clinical parameters, including patient demographics, tumour classifications and overall survival.

fluorescent reagents for simultaneous measurement of 3 fundamental parameters of apoptosis. Enlarged nuclei were stained blue (Hoechst), *f*-actin, a marker of cytoskeletal integrity, was stained green (Alexa Flour[®] 488 Phalloidin) and mitochondrial mass/potential within the cells was stained orange/pink (Mito Tracker[®] Red). A notable change in the morphology of both cell lines was observed following treatment. These changes were characterised by a reduction in nuclear condensation and mitochondrial mass/potential within the cells, as well as a reduction in *f*-actin content (Figure 4A).

Quantification of multi-parameter apoptosis signalling was carried out using In Cell Analyser software. Selective TXS inhibition resulted in a reduction in both cellular *f*-actin content and mitochondrial mass/potential in both cell lines (Figure 4B), indicating that the mechanism whereby TXS inhibition reduces tumour cell proliferation/survival in these cells is through induction of apoptosis.

In order to confirm the observations of the High Content Screening, a number of alternate apoptosis assays were carried out on both cell lines following treatment with ozagrel. These included DNA laddering and Cell Death Detection ELISA. DNA fragmentation/laddering was observed in both cell lines following 24 h selective TXS inhibition (500 nM, 5 μM ozagrel; Figure 4C). In addition Cell Death Detection ELISA demonstrated increased nucleosome generation in the cytoplasmic fraction of cell lysates following TXS inhibition with 50 nM (1.5 ± 0.19 fold increase), 500 nM (1.68 ± 0.3 fold increase) or 5 μM (1.67 ± 0.18 fold increase) ozagrel in A-549 cells, relative to untreated controls (Figure 4D). A similar increase in nucleosome generation was observed in SKMES-1 cells following treatment with 50 nM (1.24 ± 0.03 fold increase), 500 nM (1.5 ± 0.13 fold increase) or 5 μM (1.65 ± 0.28 fold increase) ozagrel (data not shown). These results confirm that ozagrel exerts its effects through

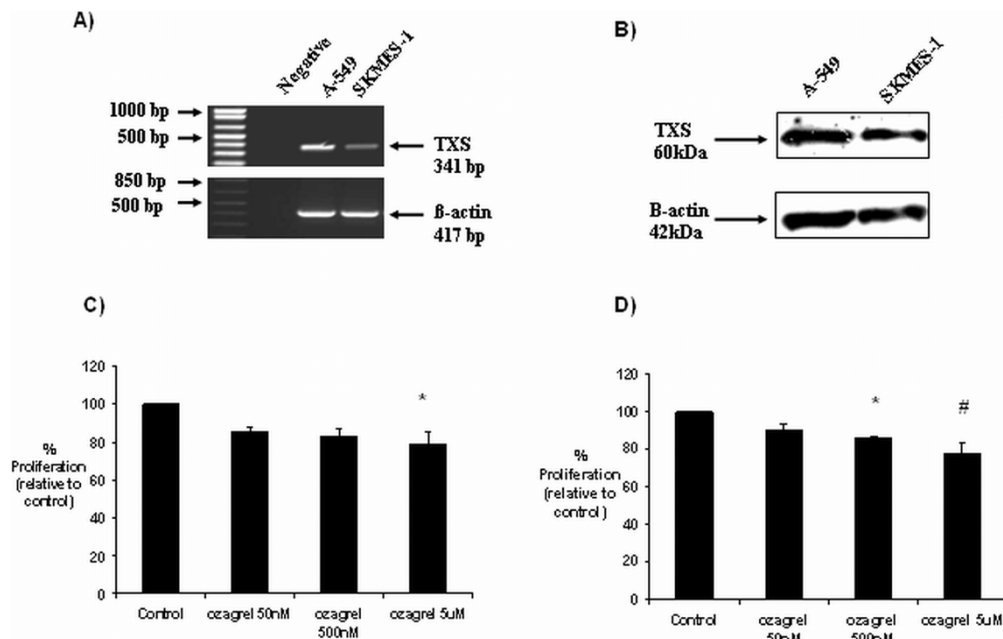


Figure 3 Thromboxane synthase expression in NSCLC cells and effects of selective inhibition on tumour cell growth. A modest basal expression of TXS was observed in A-549 and SKMES-1 cell lines at both the RNA (A) and protein (B) levels. Selective TXS inhibition resulted in a significant reduction in tumour cell survival in both A-549 (C) and SKMES-1 (D) cell lines. Data is expressed as mean \pm SEM, with proliferation values expressed as a percentage of the controls (* $p < 0.05$ relative to control, # $p < 0.05$ relative to control; $n = 3$).

induction of apoptosis, resulting in DNA fragmentation, and nucleosome generation.

Stable over-expression of thromboxane synthase in SKMES-1 cells

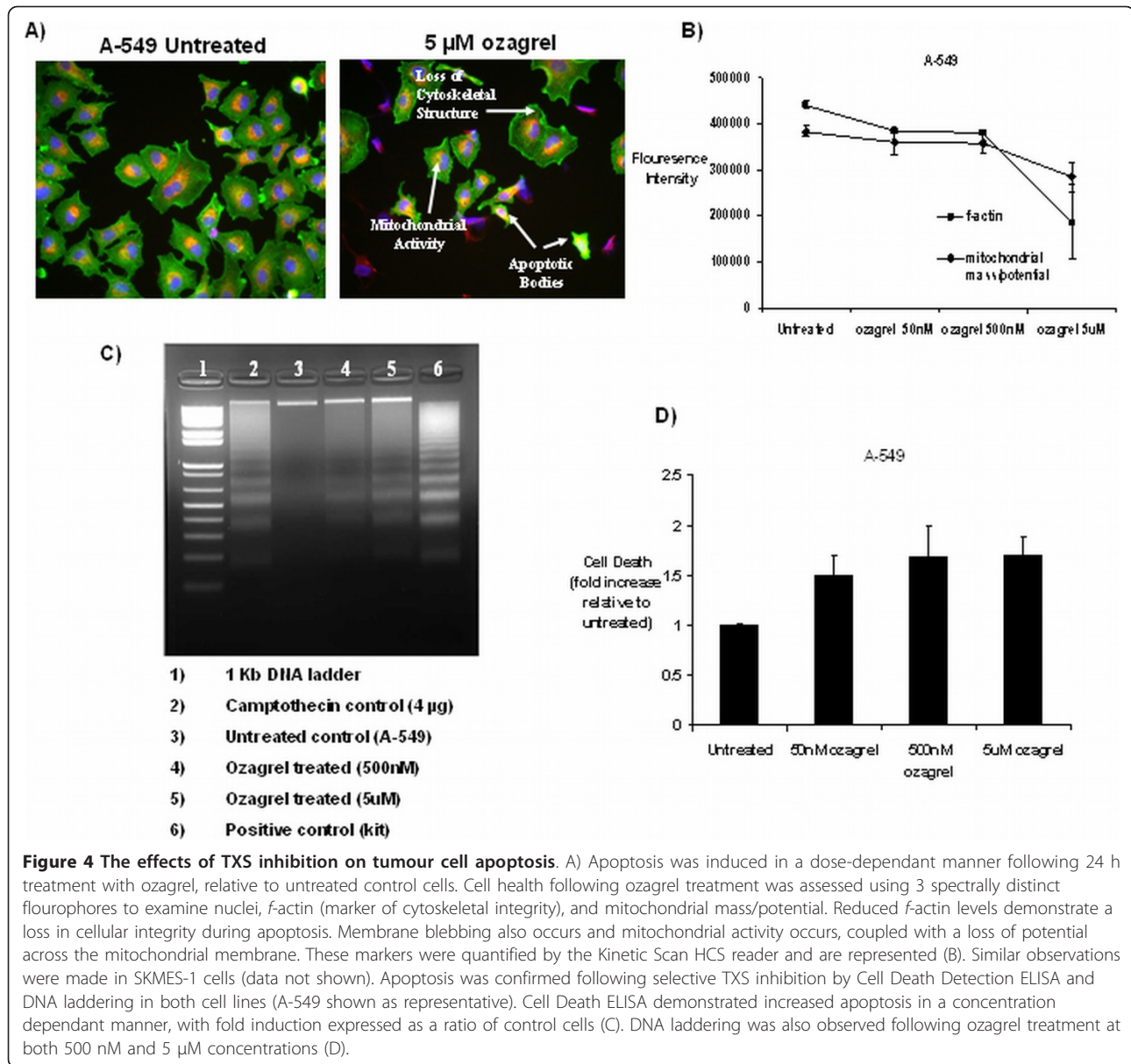
In order to confirm the effects of selective TXS inhibition, stable clones over-expressing TXS were generated in SKMES-1 cells. The SKMES-1 cell line was chosen for stable transfection of TXS as baseline expression of both RNA and protein levels of this enzyme in this cell line are relatively low (Figure 3A, B). Following transfection, TXS over-expression was characterised by both RT-PCR (Figure 5A) and western analysis (Figure 5B). A single TXS over-expressing clone was subsequently chosen for further analysis (TXS clone 2), while a corresponding empty vector clone was also selected as a control.

Thromboxane synthase over-expression increases tumour cell growth/invasiveness and appears to protect against apoptosis

The effect of TXS over-expression on tumour cell proliferation/survival was examined by BrdU assay. Wild-type SKMES-1 cells, TXS over-expressing cells, and their corresponding empty vector control were seeded onto 96-well plates and allowed to adhere overnight. Cells were then either serum-starved (0.5% FBS media), or incubated in 10% FBS medium for 48 or 72 h. A significant

increase ($p < 0.05$) in tumour cell growth was observed in TXS clone 2 when incubated under full-serum conditions for 48 h, relative to empty vector transfected controls ($144 \pm 2.6\%$ vs. $115 \pm 7.1\%$). A similar effect was observed when the cells were incubated in serum-depleted medium for 48 h ($182 \pm 8.3\%$ clone 2 vs. $123 \pm 9.4\%$ empty vector). Empty vector transfected cells appeared to grow at a faster rate than wild-type cells under both full-serum ($115 \pm 7.1\%$ vs. $100 \pm 2.3\%$) and serum-depleted ($123 \pm 9.4\%$ vs. $100 \pm 5.5\%$) conditions, although this was not significant in either case (Figure 6A). A similar effect was observed in TXS over-expressing clone 2 following a 72 h incubation, with a highly significant increase ($p < 0.01$) in cell proliferation/survival observed under both full-serum ($182.7 \pm 17\%$ clone 2 vs. $100.2 \pm 8.6\%$ empty vector) and serum-starved ($194 \pm 12.2\%$ clone 2 vs. $130 \pm 11.1\%$ empty vector) conditions. While no difference in proliferation was observed between empty vector transfected cells and wild-type control cells under full-serum conditions ($100.2 \pm 8.6\%$ vs. $100 \pm 8.1\%$), proliferation was increased in empty vector cells following serum-starvation ($130 \pm 11.1\%$ vs. $100 \pm 10.6\%$), suggesting that these cells may be more robust under these conditions (Figure 6B).

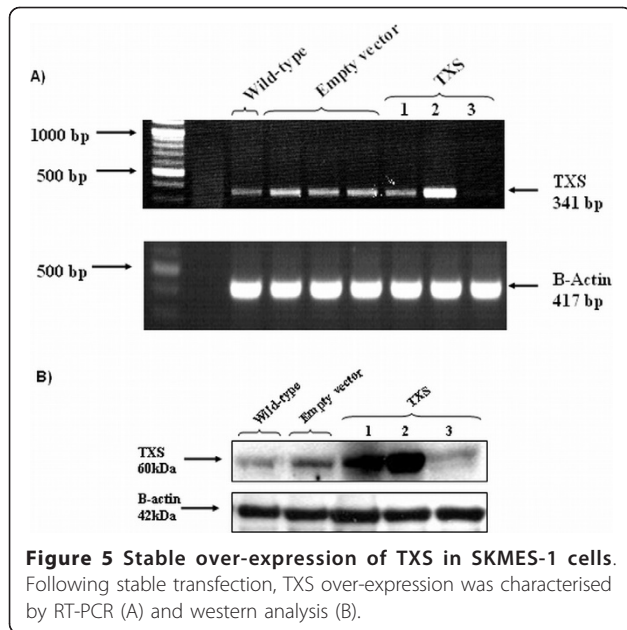
TXS expression has been shown to have a potential role in tumour invasion and metastasis [26]. Invasion through the extra-cellular matrix (ECM) is an important



step in tumour metastasis. The effect of TXS over-expression on tumour-cell invasion was therefore examined by Cell Invasion Assay. A significant increase in tumour-cell invasion was observed in TXS-transfected clone 2, relative to the corresponding empty vector control cells ($165 \pm 0.64\%$ vs. $61.4 \pm 15.4\%$). No significant difference in tumour cell invasion was observed between empty vector control SKMES-1 cells and wild-type cells ($61.4 \pm 15.4\%$ vs. $100 \pm 14.7\%$) (Figure 6C).

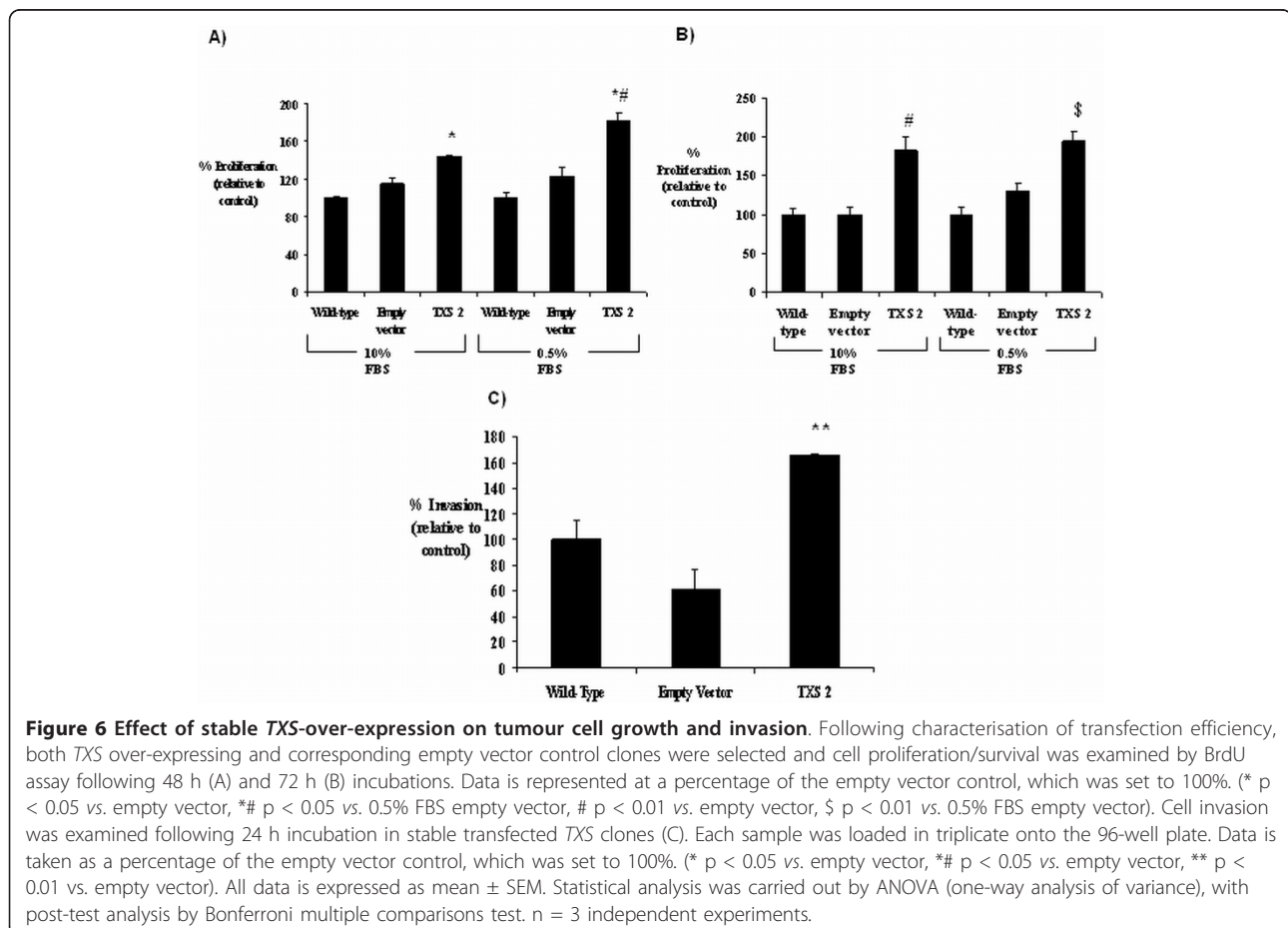
In order to further examine the effect of TXS over-expression on tumour survival pathways in SKMES-1 cells, tumour-cell apoptosis was examined in stable transfectant clones, corresponding empty vector controls, and wild-type controls by flow cytometry. Stable

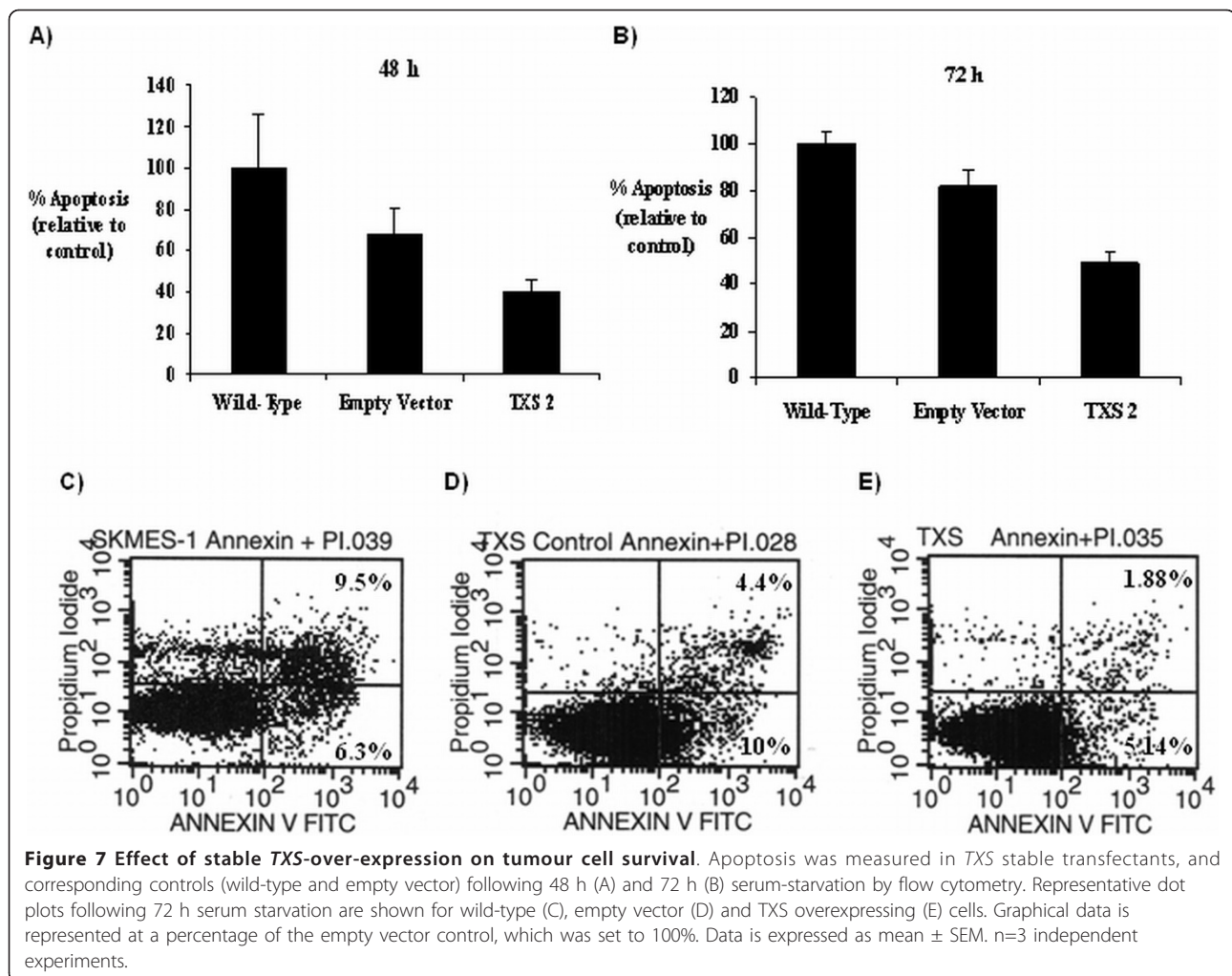
TXS over-expression appeared to protect against apoptosis in these cells. A reduction in tumour cell apoptosis was observed in the TXS clone 2 following 48 h (Figure 7A) or 72 h (Figure 7B) serum-starvation, relative to empty-vector transfected controls ($40 \pm 5\%$ vs. $67 \pm 12\%$ 48 h, $49.6 \pm 4.2\%$ vs. $82.2 \pm 6.6\%$ 72 h). However, neither of these effects was found to be statistically significant. Additionally, no significant differences in apoptosis were observed between wild-type SKMES-1 cells and empty-vector control cells at either time-point. Representative dot plots showing percentage apoptosis in wild-type, empty vector, and TXS over-expressing clones following 72 h serum-starvation are shown in Figure 7C-E.



Discussion

The tumour-promoting effects of COX-2 over-expression may be attributable to specific downstream products of arachidonic acid metabolism [30]. The function of thromboxane synthase and its prostanoid, thromboxane A₂ in the cardiovascular system have been extensively studied and are well known. The enzyme has been shown to have a major role in maintaining cardiovascular haemostasis, mediated through its effects on platelet activation and aggregation. The impact of thromboxane synthase on cancer development and progression has received considerable interest over the past number of years. Expression of this enzyme has been shown to promote tumourigenesis *via* its effects on tumour growth, angiogenesis and metastasis [20-22,24]. However, the role of TXS in non-small cell lung cancer has not yet been investigated. The aim of the current study was to examine the expression profile of TXS in NSCLC and to determine whether expression of this enzyme is a prognostic factor or potential therapeutic target in the disease. Our study demonstrates that TXS





expression is increased in NSCLC but was not a prognostic factor in the disease. However our data suggests that TXS promotes tumour growth and development, and is therefore a potential therapeutic target in NSCLC.

Examination of TXS expression pattern in matched tumour/normal protein samples revealed significantly increased expression in NSCLC samples relative to matched normal controls. TXS over-expression has been observed in a variety of other cancer types, including thyroid [20], bladder [21], prostate [22] and colorectal cancer [24]. TXS over-expression has been correlated with significantly reduced patient survival in bladder cancer [21]. In prostate cancer, its expression was significantly correlated with advanced stage and grade. In this study, the authors suggested that TXS activity was dependant on COX-2 and to a lesser degree, COX-1 to supply the PGH2 substrate [22,25]. Previous studies in human lung carcinoma found levels of the downstream metabolite of TXS, TXB₂, to be significantly higher in tumour tissues relative to non-tumour controls [31].

Circulating TXS prostanoid levels cannot be measured quantitatively due to its very short half-life. In order to determine fractional amounts circulating in the plasma, the amount of the stable TXA₂ metabolite, TXB₂ was measured in a retrospective panel of NSCLC plasma samples and age-matched controls. TXB₂ levels were significantly higher in patient samples, with basal control TXB₂ levels comparing favourably to previous studies (unpublished data). Our observation suggests that circulatory TXB₂ levels are increased in NSCLC, which may potentially impact on a patient's risk of developing venous thrombosis. Venous thromboembolism is a frequent cause of cancer-associated mortality [32] and patients with NSCLC have a 20-fold elevated risk of thrombosis [33]. In addition, increases in TXB₂ expression have been associated with increased lipid peroxidation and bcl2 expression [31], suggesting that circulating TXB₂ levels may promote tumour formation, partly *via* apoptosis evasion. As a result of our findings, we are setting up a study to prospectively examine the impact

of circulating TXB₂ levels on thromboembolic events and prognosis in NSCLC.

The role of COX-2 in lung cancer is well established, with a number of clinical trials examining COX-2 inhibition as a potential therapy for NSCLC [9-11]. COX-2 expression is required for PGH₂ and subsequent prostanoid generation (including thromboxane A₂), and is therefore of importance for the activity and subsequent effects of TXS. This is supported by a previous report that TXS regulates tumour motility *via* the COX-2 pathway in prostate cancer [22]. Thromboxane A₂, the prostanoid product of TXS, has also been shown to mediate COX-2 dependant angiogenesis. Linear correlation analysis revealed a highly significant association of COX-2 with TXS expression, supporting previous observations [22]. COX-2 and TXS expression levels were both significantly higher in adenocarcinoma patients, relative to squamous. The significance of these observations is unclear, but it has been observed that patients with adenocarcinoma are at a higher risk of developing venous thrombosis than those with squamous cell carcinoma [33]. A significant increase in COX-2 and TXS expression was also observed in female patients, relative to males. While no studies have previously been carried out to determine a possible gender influence on the expression of these enzymes in cancer, recent studies in murine models have shown that levels of constrictor prostanoids such as COX-2 and TXA₂ are higher in females than males [34]. Expression levels of both enzymes were not altered with either tumour stage or nodal status. Interestingly, both COX-2 and TXS expression levels were significantly lower in grade 3 tumours, relative to grade 2. These observations are in contrast to those in a prostate cancer study [22], but are supported by previous observations in breast cancer [35], suggesting that the expression pattern of this enzyme may vary between cancer types.

COX-2 expression has previously been associated with reduced patient survival in NSCLC [6-8]. Our study noted similar observations. While COX-2 expression was not associated with a significant reduction in long-term (5-year) survival, statistical significance was observed for short-term (2-year) patient survival. In contrast, no significant correlation of TXS expression with patient survival was observed, even when TXS expression was examined in combination with levels of COX-2 expression. While this observation may seem surprising, given previous findings, similar observations have been observed in breast cancer patients where low levels of TXS expression were correlated with tumours of high grade and a predicted poor clinical outcome [35]. The authors also found that levels of the thromboxane receptor (TP) were negatively associated with disease-free survival, suggesting that the downstream receptor,

as opposed to its corresponding synthase, may be prognostic in the disease [36].

Selective inhibition of TXS has been shown to reduce tumour cell proliferation/survival in a number of cancers including colorectal carcinoma [24], and bladder cancer [21]. In our study, selective inhibition of TXS significantly (and dose-dependently) reduced tumour cell growth in an adenocarcinoma and squamous cell NSCLC cell line. This was mirrored by a reduction in thromboxane metabolite (TXB₂) generation, as assessed by enzyme immunoassay of the culture medium (data not shown). In direct contrast, stable TXS over-expression significantly increased tumour cell growth in SKMES-1 cells, implicating this enzyme as a survival factor and potential therapeutic target in NSCLC. Our observations are in agreement with previous observations in a xenograft colorectal cancer model [27], and suggest that TXS is a potential therapeutic target in NSCLC pathogenesis. While the effect of TXS inhibition on healthy cells was not examined, previous studies have shown that TXS blockade inhibits endothelial cell migration in response to VEGF or bFGF, suggesting an effect on normal cellular mechanisms [23]. The significantly increased NSCLC TXS levels observed in our study suggests that TXS inhibition would have a preferential effect on tumour cells and warrants further investigation in NSCLC pathogenesis.

Increased apoptosis following TXS inhibition was demonstrated by High Content Screening (HCS), and quantified using In Cell Analyser software. Apoptosis was characterised by a reduction in mitochondrial mass/potential and *f*-actin content in both cell lines following treatment with ozagrel. HCS observations were validated by DNA laddering and Cell Death Detection ELISA. These findings are consistent with a recent study by Moussa *et al.* in bladder cancer [26]. They are also supported by our further observations that stable TXS over-expression appeared to protect against tumour cell apoptosis, relative to controls. It may therefore be hypothesised that TXS exerts its effects on tumour cells, at least in part, *via* inhibition of apoptosis. In addition to apoptosis however, TXS and its product, TXA₂ have also been implicated in the regulation of other cancer survival pathways such as angiogenesis [23], migration [21,22], invasion [21], and tumour cell metastasis [23]. In our study TXS over-expression significantly increased the invasive capacity of SKMES-1 cells, suggesting another survival mechanism associated with over-expression. In order to further examine the mechanism underlying the effects of selective TXS inhibition, RT² Profiler™ Cancer PathwayFinder PCR arrays were used to examine the expression of a panel of genes implicated in tumourigenesis following 24 h treatment with ozagrel (additional file 1). Notable changes in gene expression

following treatment were observed in pathways of apoptosis, angiogenesis and invasion/metastasis. While each cell line exhibited distinct gene expression profiles following TXS inhibition, a small subset of genes stood out as being of interest. These included the pro-apoptotic genes *Bax* (4-fold increase), *Granzyme A* (9-fold increase), and *TNF* (4-fold increase) in A-549 cells and anti-apoptotic genes *Bcl2* (3-fold decrease) and *IGF1* (5-fold decrease) in SKMES-1 cells (Additional file 2, Figure S1). The previous observation that increases in circulating TXB₂ expression is associated with BCL2 expression lends support to our observations [31]. In addition to the effects of TXS inhibition on tumour cell survival mechanisms, examination of downstream genetic pathways implicated in tumorigenesis is also of particular interest in NSCLC, with the potential to provide further insight into the anti-tumour effects of TXS inhibition.

In conclusion, TXS and its metabolite, TXB₂, are over-expressed in NSCLC. While TXS was not found to be prognostic, our study clearly shows that it is pro-tumourigenic and may be a target for therapeutic intervention *via* induction of apoptosis. Inhibition of this enzyme may therefore be a suitable therapeutic approach for NSCLC treatment, either alone, or in combination with conventional chemotherapeutic agents.

Additional material

Additional file 1: Examination of changes in cancer-associated gene expression profile following selective TXS inhibition. Changes in gene expression profile following selective TXS inhibition were assessed in both A-549 and SKMES-1 cell lines by quantitative PCR array, using RT² Profiler™™ Cancer PathwayFinder arrays.

Additional file 2: Pie charts demonstrating the changes in cancer-associated gene expression profile following selective TXS inhibition (in A-549 and SKMES-1 NSCLC cell lines). The results of the analysis described in additional file 1 are represented graphically in this additional file (Additional File 2, Figure S1), with pie charts used to group qRT-PCR changes in gene expression following TXS inhibition into the 6 hallmarks of cancer. Figure S1: Cancer-gene expression profiling following 24 h selective TXS inhibition in A-549 (A) and SKMES-1 (B) cell lines. Genes were grouped according to the six hallmarks of cancer. These included genes involved in cell cycle and DNA damage repair, apoptosis/cell senescence, signal transduction/transcription, adhesion, angiogenesis and invasion/metastasis.

Abbreviations

NSCLC: non-small cell lung cancer; AA: arachidonic acid; COX: cyclooxygenase; TXS: thromboxane synthase; TXA₂: thromboxane A₂; TXB₂: thromboxane B₂; TMA: tissue microarray; IHC: immunohistochemistry.

Acknowledgements

This work was supported by research fellowship from the Irish Cancer Society (registered charity CHY5863) and a SPORE (Scientific Program of Research Excellence) grant from the National Cancer Institute (grant number: VUMC34868-R).

Author details

¹Department of Surgery, Institute of Molecular Medicine, Trinity Health Sciences Centre, St. James's Hospital, Dublin 8, Ireland. ²Department of Clinical Medicine, Institute of Molecular Medicine, Trinity Health Sciences Centre, St. James's Hospital, Dublin 8, Ireland. ³Department of Pathology, Beaumont Hospital, Dublin 9, Ireland.

Authors' contributions

MCC carried out all *in-vitro* experiments (with the exception of high content screening) and drafted the manuscript. KG carried out high content screening analysis. KG also generated the NSCLC tissue microarrays, carried out TMA staining analysis (TXS and COX-2) and collected/isolated NSCLC protein and plasma samples (and relevant controls). RC aided in the generation of the NSCLC tissue microarrays. R.C. also cut sections from these TMAs and assisted in optimisation of both TXS and COX-2 IHC staining. EK participated in the design of the study and also provided technical (pathological) expertise in relation to the staining and grading of NSCLC tissue microarrays (and full-face sections) for both TXS and COX-2. KJO'B participated in the design and coordination of the study and provided technical expertise when drafting the manuscript. GPP played a major role in the design and coordination of the study. GPP also carried out TMA staining analysis (TXS and COX-2) and helped draft the manuscript. All authors read and approved the final manuscript.

Competing interests

The authors declare that they have no competing interests.

Received: 16 November 2010 Accepted: 9 March 2011

Published: 9 March 2011

References

1. Alberg AJ, Brock MV, Samet JM: **Epidemiology of lung cancer: looking to the future.** *J Clin Oncol* 2005, **23**:3175-3185.
2. Spicer J, Chowdhury S, Harper P: **Targeting novel and established therapies for non-small cell lung cancer.** *Cancer Lett* 2007, **250**:9-16.
3. Carney DN: **Lung cancer—time to move on from chemotherapy.** *N Engl J Med* 2002, **346**:126-128.
4. Hinz B, Brune K: **Cyclooxygenase-2—10 years later.** *J Pharmacol Exp Ther* 2002, **300**:367-375.
5. Needleman P, Isakson PC: **Selective inhibition of cyclooxygenase-2.** *Science and Medicine* 1998, **26**:35.
6. Brabender J, Park J, Metzger R, Schneider PM, Lord RV, Holscher AH, Danenberg KD, Danenberg PV: **Prognostic significance of cyclooxygenase 2 mRNA expression in non-small cell lung cancer.** *Ann Surg* 2002, **235**:440-443.
7. Khuri FR, Wu H, Lee JJ, Kemp BL, Lotan R, Lippman SM, Feng L, Hong WK, Xu XC: **Cyclooxygenase-2 overexpression is a marker of poor prognosis in stage I non-small cell lung cancer.** *Clin Cancer Res* 2001, **7**:861-867.
8. Achiwa H, Yatabe Y, Hida T, Kuroishi T, Kozaki K, Nakamura S, Ogawa M, Sugiura T, Mitsudomi T, Takahashi T: **Prognostic significance of elevated cyclooxygenase 2 expression in primary, resected lung adenocarcinomas.** *Clin Cancer Res* 1999, **5**:1001-1005.
9. Edelman MJ, Watson D, Wang X, Morrison C, Kratzke RA, Jewell S, Hodgson L, Mauer AM, Gajra A, Masters GA, Bedor M, Vokes EE, Green MJ: **Eicosanoid modulation in advanced lung cancer: cyclooxygenase-2 expression is a positive predictive factor for celecoxib + chemotherapy—Cancer and Leukemia Group B Trial 30203.** *J Clin Oncol* 2008, **26**:848-855.
10. Fidler MJ, Argiris A, Patel JD, Johnson DH, Sandler A, Villafior VM, Coon Jt, Buckingham L, Kaiser K, Basu S, Bonomi P: **The potential predictive value of cyclooxygenase-2 expression and increased risk of gastrointestinal hemorrhage in advanced non-small cell lung cancer patients treated with erlotinib and celecoxib.** *Clin Cancer Res* 2008, **14**:2088-2094.
11. Mutter R, Lu B, Carbone DP, Csiki I, Moretti L, Johnson DH, Morrow JD, Sandler AB, Shyr Y, Ye F, Choy H: **A phase II study of celecoxib in combination with paclitaxel, carboplatin, and radiotherapy for patients with inoperable stage IIIA/B non-small cell lung cancer.** *Clin Cancer Res* 2009, **15**:2158-2165.
12. Bombardier C, Laine L, Reicin A, Shapiro D, Burgos-Vargas R, Davis B, Day R, Ferraz MB, Hawkey CJ, Hochberg MC, Kvien TK, Schnitzer TJ: **Comparison of upper gastrointestinal toxicity of rofecoxib and naproxen in patients**

- with rheumatoid arthritis. VIGOR Study Group. *N Engl J Med* 2000, **343**:1520-1528, 1522 p following 1528.
13. Bresalier RS, Sandler RS, Quan H, Bolognese JA, Oxenius B, Horgan K, Lines C, Riddell R, Morton D, Lanasa A, Konstam MA, Baron JA: **Cardiovascular events associated with rofecoxib in a colorectal adenoma chemoprevention trial.** *N Engl J Med* 2005, **352**:1092-1102.
 14. Solomon SD, McMurray JJ, Pfeffer MA, Wittes J, Fowler R, Finn P, Anderson WF, Zaubler A, Hawk E, Bertagnolli M: **Cardiovascular risk associated with celecoxib in a clinical trial for colorectal adenoma prevention.** *N Engl J Med* 2005, **352**:1071-1080.
 15. Brown JR, DuBois RN: **Cyclooxygenase as a target in lung cancer.** *Clin Cancer Res* 2004, **10**:4266s-4269s.
 16. Haurand M, Ullrich V: **Isolation and characterization of thromboxane synthase from human platelets as a cytochrome P-450 enzyme.** *J Biol Chem* 1985, **260**:15059-15067.
 17. Tanabe T, Ullrich V: **Prostacyclin and thromboxane synthases.** *J Lipid Mediat Cell Signal* 1995, **12**:243-255.
 18. Funk CD: **Prostaglandins and leukotrienes: advances in eicosanoid biology.** *Science* 2001, **294**:1871-1875.
 19. Samuelsson B, Goldyne M, Granstrom E, Hamberg M, Hammarstrom S, Malmsten C: **Prostaglandins and thromboxanes.** *Annu Rev Biochem* 1978, **47**:997-1029.
 20. Kajita S, Ruebel KH, Casey MB, Nakamura N, Lloyd RV: **Role of COX-2, thromboxane A2 synthase, and prostaglandin I2 synthase in papillary thyroid carcinoma growth.** *Mod Pathol* 2005, **18**:221-227.
 21. Moussa O, Yordy JS, Abol-Enein H, Sinha D, Bissada NK, Halushka PV, Ghoneim MA, Watson DK: **Prognostic and functional significance of thromboxane synthase gene overexpression in invasive bladder cancer.** *Cancer Res* 2005, **65**:11581-11587.
 22. Nie D, Che M, Zacharek A, Qiao Y, Li L, Li X, Lamberti M, Tang K, Cai Y, Guo Y, Grignon D, Honn KV: **Differential expression of thromboxane synthase in prostate carcinoma: role in tumour cell motility.** *Am J Pathol* 2004, **164**:429-439.
 23. Nie D, Lamberti M, Zacharek A, Li L, Szekeres K, Tang K, Chen Y, Honn KV: **Thromboxane A(2) regulation of endothelial cell migration, angiogenesis, and tumour metastasis.** *Biochem Biophys Res Commun* 2000, **267**:245-251.
 24. Sakai H, Suzuki T, Takahashi Y, Ukai M, Tauchi K, Fujii T, Horikawa N, Minamimura T, Tabuchi Y, Morii M, Tsukada K, Takeguchi N: **Upregulation of thromboxane synthase in human colorectal carcinoma and the cancer cell proliferation by thromboxane A2.** *FEBS Lett* 2006, **580**:3368-3374.
 25. Dasseltes T, de Leval X, de Leval L, Pirotte B, Castronovo V, Waltregny D: **Activation of the thromboxane A2 pathway in human prostate cancer correlates with tumour Gleason score and pathologic stage.** *Eur Urol* 2006, **50**:1021-1031, discussion 1031.
 26. Moussa O, Riker JM, Klein J, Fraig M, Halushka PV, Watson DK: **Inhibition of thromboxane synthase activity modulates bladder cancer cell responses to chemotherapeutic agents.** *Oncogene* 2008, **27**:55-62.
 27. Pradono P, Tazawa R, Maemondo M, Tanaka M, Usui K, Saijo Y, Hagiwara K, Nukiwa T: **Gene transfer of thromboxane A(2) synthase and prostaglandin I(2) synthase antithetically altered tumour angiogenesis and tumour growth.** *Cancer Res* 2002, **62**:63-66.
 28. Jantke J, Ladehoff M, Kurzel F, Zapf S, Kim E, Giese A: **Inhibition of the arachidonic acid metabolism blocks endothelial cell migration and induces apoptosis.** *Acta Neurochir (Wien)* 2004, **146**:483-494.
 29. Rieger J, Ohgaki H, Kleihues P, Weller M: **Human astrocytic brain tumours express AP02L/TRAIL.** *Acta Neuropathol* 1999, **97**:1-4.
 30. Ermert L, Dierkes C, Ermert M: **Immunohistochemical expression of cyclooxygenase isoenzymes and downstream enzymes in human lung tumours.** *Clin Cancer Res* 2003, **9**:1604-1610.
 31. Chen GG, Lee TW, Yip JH, Xu H, Lee IK, Mok TS, Warner TD, Yim AP: **Increased thromboxane B(2) levels are associated with lipid peroxidation and Bcl-2 expression in human lung carcinoma.** *Cancer Lett* 2006, **234**:193-198.
 32. Goldenberg N, Kahn SR, Solymoss S: **Markers of coagulation and angiogenesis in cancer-associated venous thromboembolism.** *J Clin Oncol* 2003, **21**:4194-4199.
 33. Blom JW, Osanto S, Rosendaal FR: **The risk of a venous thrombotic event in lung cancer patients: higher risk for adenocarcinoma than squamous cell carcinoma.** *J Thromb Haemost* 2004, **2**:1760-1765.
 34. Li M, Kuo L, Stallone JN: **Estrogen potentiates constrictor prostanoid function in female rat aorta by upregulation of cyclooxygenase-2 and thromboxane pathway expression.** *Am J Physiol Heart Circ Physiol* 2008, **294**:H2444-2455.
 35. Watkins G, Douglas-Jones A, Mansel RE, Jiang WG: **Expression of thromboxane synthase, TBXAS1 and the thromboxane A2 receptor, TBXA2R, in human breast cancer.** *Int Semin Surg Oncol* 2005, **2**:23.
 36. Moussa O, Ashton AW, Fraig M, Garrett-Mayer E, Ghoneim MA, Halushka PV, Watson DK: **Novel role of thromboxane receptors beta isoform in bladder cancer pathogenesis.** *Cancer Res* 2008, **68**:4097-4104.

doi:10.1186/1476-4598-10-25

Cite this article as: Cathcart *et al.*: Examination of thromboxane synthase as a prognostic factor and therapeutic target in non-small cell lung cancer. *Molecular Cancer* 2011 **10**:25.

Submit your next manuscript to BioMed Central and take full advantage of:

- Convenient online submission
- Thorough peer review
- No space constraints or color figure charges
- Immediate publication on acceptance
- Inclusion in PubMed, CAS, Scopus and Google Scholar
- Research which is freely available for redistribution

Submit your manuscript at
www.biomedcentral.com/submit

