

RESEARCH

Open Access

# Cyclooxygenase-2 enhances $\alpha 2\beta 1$ integrin expression and cell migration via EP1 dependent signaling pathway in human chondrosarcoma cells

Ju-Fang Liu<sup>1†</sup>, Yi-Chin Fong<sup>2,3†</sup>, Chih-Shiang Chang<sup>1†</sup>, Chun-Yin Huang<sup>4</sup>, Hsien-Te Chen<sup>2</sup>, Wei-Hung Yang<sup>4</sup>, Chin-Jung Hsu<sup>2,3</sup>, Long-Bin Jeng<sup>6</sup>, Chih-Yi Chen<sup>7</sup>, Chih-Hsin Tang<sup>5,8\*</sup>

## Abstract

**Background:** Cyclooxygenase (COX)-2, the inducible isoform of prostaglandin (PG) synthase, has been implicated in tumor metastasis. Interaction of COX-2 with its specific EP receptors on the surface of cancer cells has been reported to induce cancer invasion. However, the effects of COX-2 on migration activity in human chondrosarcoma cells are mostly unknown. In this study, we examined whether COX-2 and EP interaction are involved in metastasis of human chondrosarcoma.

**Results:** We found that over-expression of COX-2 or exogenous PGE<sub>2</sub> increased the migration of human chondrosarcoma cells. We also found that human chondrosarcoma tissues and chondrosarcoma cell lines had significant expression of the COX-2 which was higher than that in normal cartilage. By using pharmacological inhibitors or activators or genetic inhibition by the EP receptors, we discovered that the EP1 receptor but not other PGE receptors is involved in PGE<sub>2</sub>-mediated cell migration and  $\alpha 2\beta 1$  integrin expression. Furthermore, we found that human chondrosarcoma tissues expressed a higher level of EP1 receptor than normal cartilage. PGE<sub>2</sub>-mediated migration and integrin up-regulation were attenuated by phospholipase C (PLC), protein kinase C (PKC) and c-Src inhibitor. Activation of the PLC $\beta$ , PKC $\alpha$ , c-Src and NF- $\kappa$ B signaling pathway after PGE<sub>2</sub> treatment was demonstrated, and PGE<sub>2</sub>-induced expression of integrin and migration activity were inhibited by the specific inhibitor, siRNA and mutants of PLC, PKC, c-Src and NF- $\kappa$ B cascades.

**Conclusions:** Our results indicated that PGE<sub>2</sub> enhances the migration of chondrosarcoma cells by increasing  $\alpha 2\beta 1$  integrin expression through the EP1/PLC/PKC $\alpha$ /c-Src/NF- $\kappa$ B signal transduction pathway.

## Background

Chondrosarcoma is the second most common malignancy of bone and it has a poor response to chemotherapy or radiation treatment currently-used, making the management of chondrosarcomas a complicated challenge [1]. Clinically, surgical resection remains the primary mode of therapy for chondrosarcoma. In the absence of an effective adjuvant therapy, this mesenchymal malignancy has a poor prognosis and therefore, it is important to explore novel and adequate remedies [2].

Since chondrosarcoma is a type of highly malignant tumor with a potent capacity to invade locally and metastasize distantly [2], an approach that decreases its ability to invade and metastasize may facilitate the development of effective adjuvant therapy.

Cyclooxygenases (COXs) are the rate-limiting enzymes that catalyze the conversion of arachidonic acid to prostaglandins (PGs). Two COX isoforms with distinct tissue distributions and physiological functions have been identified [3]. COX-1 is constitutively expressed in many tissues and plays important roles in the control of homeostasis [4]. Conversely, COX-2 is an inducible enzyme and is activated by extracellular stimuli such as growth factors and pro-inflammatory cytokines [5].

\* Correspondence: chtang@mail.cmu.edu.tw

† Contributed equally

<sup>5</sup>Department of Pharmacology, China Medical University, Taichung, Taiwan

Recent investigations indicated that over-expression of COX-2 is frequently found in many types of cancer, including colon, lung, breast, pancreas, head and neck cancers [6-9], and is usually associated with poor prognosis and short survival. Identification of four subtypes of the PGE receptor (EP1-EP4) has made it possible to analyze their effects on human cancer cells [10,11]. Studies have shown that EP1 is coupled to  $Ca^{2+}$  mobilization; EP2 and EP4 activate adenylate cyclase, whereas EP3 inhibits adenylate cyclase [12-14]. Furthermore, these studies indicated that cancer cells express multiple subtypes of the PGE receptor and that each subtype might be linked to different actions of PGE<sub>2</sub>.

Tumor invasion and metastasis are the critical steps in determining the aggressive phenotype of human cancers. Mortality in cancer patients principally results from metastatic spread of cancer cells to distant organs [15]. Integrins are a family of transmembrane adhesion receptors comprising 19 $\alpha$  and 8 $\beta$  subunits that interact non-covalently to form up to 24 different heterodimeric receptors [16]. The combination of different integrin subunits on the cell surface allows cells to recognize and respond to a variety of different extracellular matrix proteins including fibronectin, laminin, collagen and vitronectin [16]. Activation and elevated expression of integrin-coupled signaling effectors have been implicated in the induction of a wide variety of human cancers, including those of the breast, colon, prostate, and ovaries [17-19]. In addition, integrin has also been implicated in metastasis of lung, breast, bladder and colon cancers [20-22].

The contribution of COX-2 to tumorigenesis has been intensively studied. Previous studies have shown that COX-2 modulates cell migration and invasion in several types of cancer cells [23,24]. Interaction of COX-2 with its specific EP receptors on the surface of cancer cells has been reported to induce cancer invasion [25]. However, the effect of COX-2 and EP receptors on migration activity in human chondrosarcoma cells is mostly unknown. Here we found the mRNA expressions of COX-2 and EP1 receptor in chondrosarcoma patients and chondrosarcoma cell lines were significantly higher than in normal cartilage. COX-2 and PGE<sub>2</sub> also increased the migration and  $\alpha 2\beta 1$  integrin up-regulation of human chondrosarcoma cells. In addition, EP1 receptor, phospholipase C $\beta 3$  (PLC $\beta 3$ ), protein kinase C $\alpha$  (PKC $\alpha$ ), c-Src and NF- $\kappa$ B signaling pathways were involved.

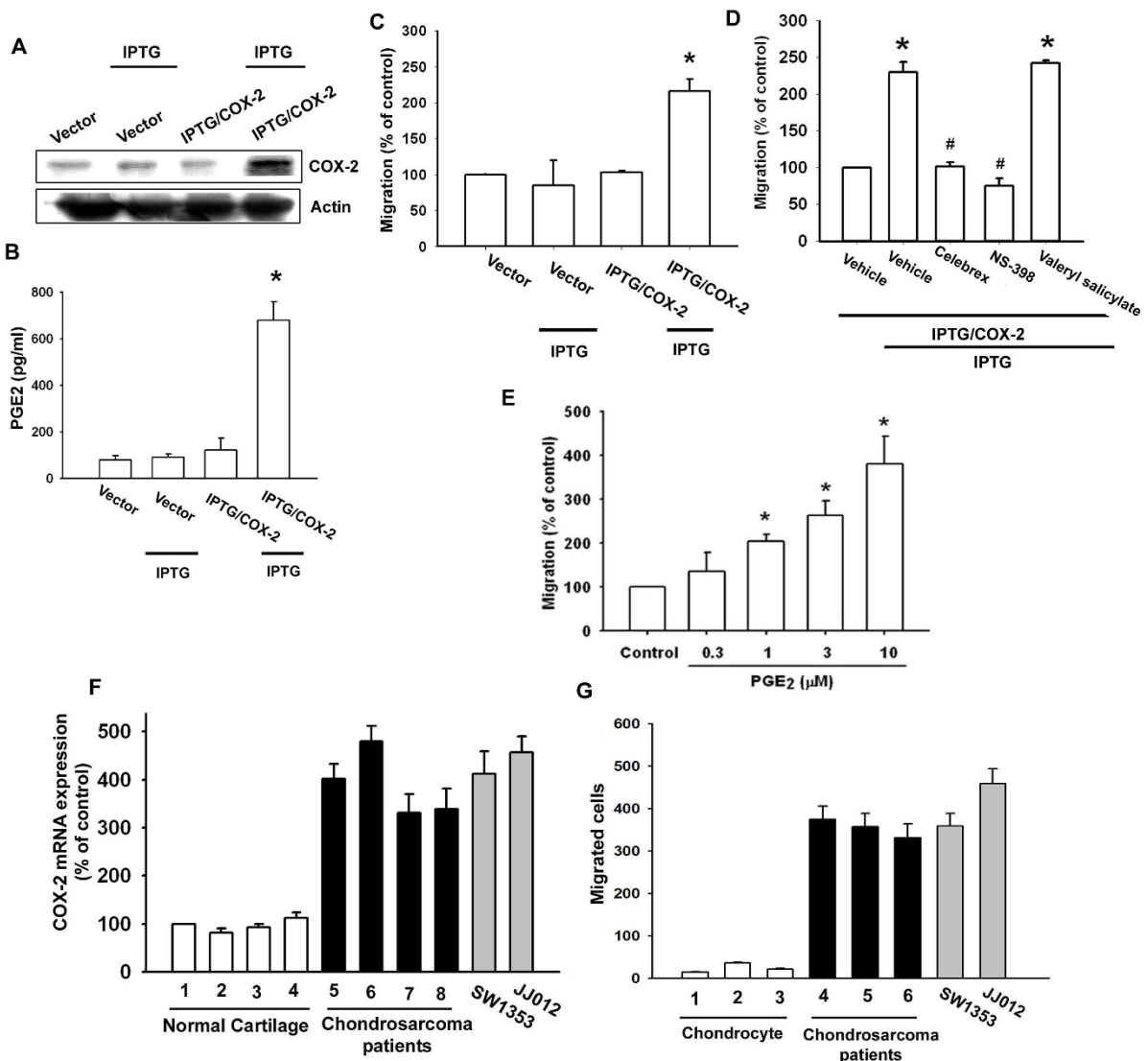
## Results

### COX-2 directed migration of chondrosarcoma cells via the EP1 receptor

COX-2 expression has been reported to stimulate directional migration and invasion of human cancer cells [23,24]. We used the IPTG-inducible COX-2 gene

expression vector to examine the role of COX-2 in chondrosarcoma cells. JJ012 cells were transfected with IPTG-inducible COX-2 gene expression vector or control vector, and then IPTG (5 mM) was added for 24 hr. By Western blot analysis and ELISA, respectively, we found that IPTG induced COX-2 and PGE<sub>2</sub> expression (Fig. 1A&1B). Furthermore, over-expression of COX-2 enhanced cell migration in chondrosarcoma cells (Fig. 1C). To confirm IPTG-inducible COX-2-mediated cell migration, the COX-2 specific inhibitors (celebrex and NS-398) were used. Celebrex and NS-398 but not COX-1 specific inhibitor (valeryl salicylate) reduced IPTG-inducible COX-2-mediated cell migration (Fig. 1D). We then directly exposed JJ012 cells to PGE<sub>2</sub> and examined the migration activity. Stimulation of cells with PGE<sub>2</sub> increased the migration activity in chondrosarcoma cells dose-dependently (Fig. 1E). We also examined human chondrosarcoma tissues for the expression of the COX-2 using qPCR. Expression of mRNA levels of COX-2 in human chondrosarcoma tissues (Fig. 1F, lines 5-8) and chondrosarcoma cell lines (SW1353 and JJ012) were significantly higher than those in normal cartilage (Fig. 1F, lines 1-4). Compared with normal cartilage, human chondrosarcoma tissues expressed a higher level of COX-2 mRNA (Table 1). In addition, primary chondrosarcoma cells and SW1353 or JJ012 cell lines were more migratory than normal chondrocyte (Fig. 1G). Thus, expression of COX-2 was associated with a metastatic phenotype of chondrosarcoma cells.

PGs exert their effects through interaction with specific EP1-4 subtype receptors [10-14]. To investigate the role of EP1-4 subtype receptors in COX-2-mediated increase of cell migration, we assessed the distribution of these EP subtype receptors in human chondrosarcoma cells by qPCR analysis. The mRNAs of EP1, EP2, EP3, and EP4 subtype receptors could be detected in human chondrosarcoma cells (Fig. 2A). After IPTG/COX-2-transfected JJ012 cells were treated for 24 hr with IPTG, the mRNA level of EP1 subtype receptor was increased, whereas EP2 and EP4 receptor mRNA remained un-changed (Fig. 2A). In addition, a similar induction of EP1 receptor mRNA, but not EP2 and EP4 receptor subtypes, was observed in JJ012 cells treated with PGE<sub>2</sub> (Fig. 2B). However, over-expression of COX-2 and exogenous PGE<sub>2</sub> slightly increased expression of EP3 receptor (Fig. 2A&2B). On the other hand, the mRNA levels of EP1 receptor in human chondrosarcoma tissues (Fig. 2C, lines 5-8) and chondrosarcoma cell lines (SW1353 and JJ012) were significantly higher than those in normal cartilage (Fig. 2C, lines 1-4). Compared with normal cartilage, human chondrosarcoma tissues expressed a higher level of EP1 mRNA (Table 1). To determine the role of EP1 receptor-dependent signaling in the regulation of cell migration in



**Figure 1** COX-2-directed migration of human chondrosarcoma cells. JJ012 cells were transfected with IPTG/COX-2 expression plasmid or control vector for 24 hr followed by stimulation with IPTG (5 mM) for 24 hr, the COX-2 expression, PGE<sub>2</sub> production and migration activity were determined by Western blot analysis (A), ELISA assay (B) and Transwell (C). JJ012 cells were transfected with IPTG/COX-2 expression plasmid or control vector for 24 hr, and pretreated with valeryl salicylate (20 μM), celebrex (10 μM) or NS-398 (20 μM) for 30 min followed by stimulation with IPTG (5 mM), and *in vitro* migration was measured with the Transwell after 24 hr (D). JJ012 cells were incubated with various concentrations of PGE<sub>2</sub>, and *in vitro* migration activity measured with the Transwell after 24 hr (E). Total RNA were extracted from normal cartilage (lines 1-4), chondrosarcoma patients (lines 5-8) or from chondrosarcoma cell lines (SW1353 and JJ012), and subjected to qPCR analysis for COX-2 (F). The migration activity of each cells measured *in vitro* with the Transwell chamber after 24 h showed a significantly higher migration activity in primary chondrosarcoma and chondrosarcoma cell lines as compared with primary chondrocyte (G). Results are expressed as the mean ± S.E. \*, p < 0.05 compared with control; #, p < 0.05 compared with PGE<sub>2</sub>-treated group.

chondrosarcoma cells, the cells were treated with EP1-4-specific agonists, and then the cell migration activity was examined. Of the agonists tested, only the EP1/EP3-selective receptor agonist, 17-phenyl trinor PGE<sub>2</sub> (3 μM), significantly increased the migration activity (Fig. 2D). In contrast, butaprost (EP2 agonist; 10 μM) and 11-deoxy-PGE<sub>1</sub> (EP2/EP4-selective agonist; 10 μM) failed to up-regulate cell migration. Sulprostone (EP3

agonist; 10 μM) slightly increased cell migration in JJ012 cells (Fig. 2D). In addition, treatment with EP1 receptor antagonist SC19220 (10 μM) effectively antagonized the potentiating effect of PGE<sub>2</sub> on cell migration activity (Fig. 2D). To further confirm this stimulation-specific mediation by EP1 receptor without EP3 receptor contamination, we assessed the role of EP1 and EP3 by using ON-TARGET smart pool EP1 and EP3, which

**Table 1 Correlation levels of cyclooxygenase-2 (COX-2), EP1,  $\alpha 2$  and  $\beta 1$  integrin expression in human chondrosarcoma and normal cartilage**

Patient	Normal cartilage				Patient	Grade	Location	Chondrosarcoma			
	COX-2	EP1	$\alpha 2$ integrin	$\beta 1$ integrin				COX-2	EP1	$\alpha 2$ integrin	$\beta 1$ integrin
1	100%	100%	100%	100%	13	II	Pelvis	402%	378%	501%	399%
2	81%	127%	95%	99%	14	II	Scapular	479%	391%	389%	420%
3	93%	139%	112%	103%	15	II	Pelvis	331%	297%	391%	475%
4	112%	81%	98%	75%	16	II	Humerus	339%	289%	402%	512%
5	71%	66%	74%	86%	17	II	Humerus	597%	661%	505%	612%
6	55%	69%	67%	97%	18	II	Scapular	697%	788%	667%	669%
7	61%	55%	85%	92%	19	II	Pelvis	711%	791%	719%	739%
8	39%	41%	75%	66%	20	II	Pelvis	456%	505%	522%	712%
9	102%	112%	101%	108%	21	II	Scapular	421%	571%	565%	705%
10	111%	121%	112%	122%	22	II	Pelvis	397%	339%	631%	669%
11	91%	81%	77%	72%	23	II	Scapular	338%	397%	668%	612%
12	121%	108%	102%	105%	24	II	Pelvis	897%	721%	612%	579%
					25	I	Pelvis	322%	259%	339%	312%
					26	I	Pelvis	217%	267%	337%	332%
					27	I	Humerus	205%	201%	269%	279%
					28	I	Scapular	272%	288%	307%	309%
					29	I	Scapular	301%	322%	365%	331%

Results are expressed as % of patient 1

decreases nonspecific effects by chemical modification and pooling [26]. Transfection of cells with ON-TARGET smart pool EP1 and EP3 siRNA reduced EP1 and EP3 expression, respectively (Fig. 2E; upper panel). Transfection of cells with EP1 but not EP3 siRNA effectively inhibited the PGE<sub>2</sub>-mediated migration of chondrosarcoma cells (Fig. 2E; lower panel). These results indicate that PGE<sub>2</sub> increased cell migration in human chondrosarcoma cells via EP1 receptor.

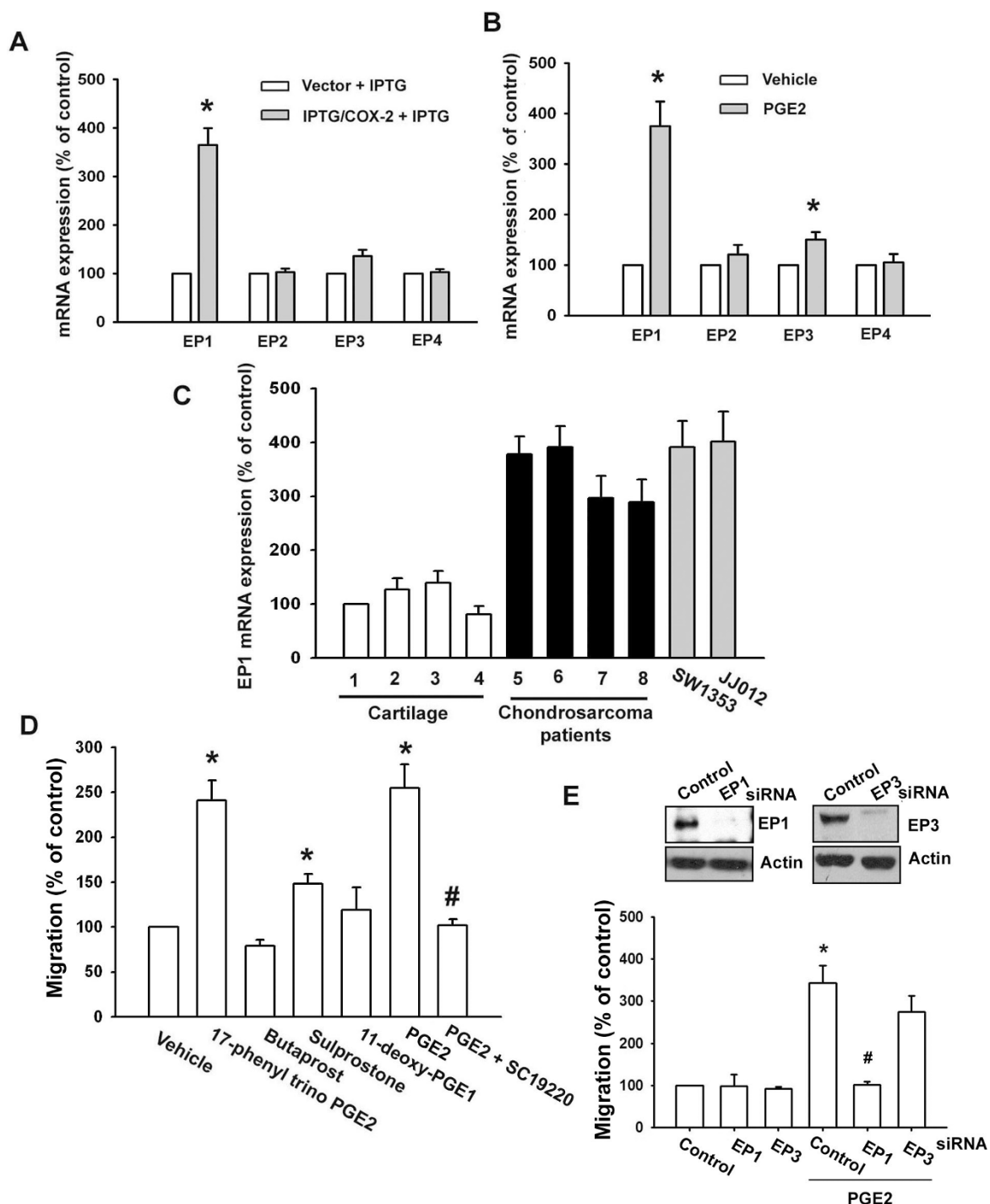
#### PGE<sub>2</sub>-directed migration of chondrosarcoma cells involves $\alpha 2\beta 1$ integrin up-regulation

Previous studies have demonstrated significant expression of integrins in human chondrosarcoma cells [27]. We therefore, hypothesized that integrins may be involved in PGE<sub>2</sub>-directed migration of chondrosarcoma cells. Flow cytometry analysis showed that PGE<sub>2</sub> induced the cell surface expression of  $\alpha 2$  and  $\alpha 2\beta 1$  integrin in JJ012 cells (Fig. 3A). To confirm this finding, expression of mRNAs in the integrins in response to PGE<sub>2</sub> was analyzed by qPCR. Treatment of JJ012 cells with PGE<sub>2</sub> induced the mRNA expression of  $\alpha 2$  and  $\beta 1$  integrins (Fig. 3B). In addition, treatment of IPTG/COX-2-transfected cells with IPTG increased mRNA expression of  $\alpha 2$  and  $\beta 1$  integrins (Fig. 3C). Furthermore, compared with normal cartilage, human chondrosarcoma tissues expressed higher levels of  $\alpha 2$  and  $\beta 1$  integrin mRNA (Table 1). Therefore, the  $\alpha 2\beta 1$  integrin plays an important role in PGE<sub>2</sub>-induced migration of human chondrosarcoma cells. Stimulation of cells with PGE<sub>2</sub> also

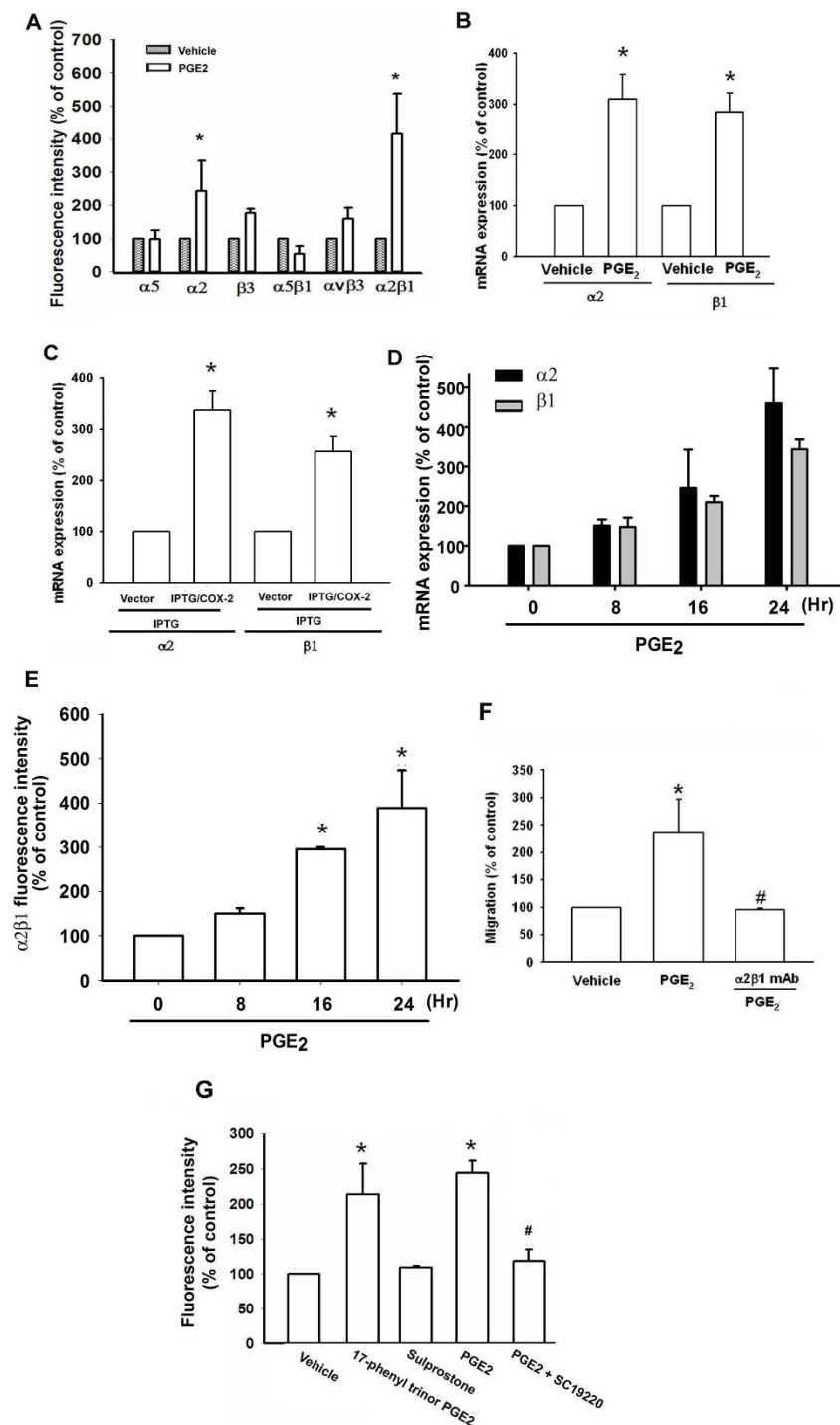
increased mRNA expression and cell surface expression of  $\alpha 2$  and  $\beta 1$  integrin time-dependently (Fig. 3D&3E). Pretreatment of cells for 30 min with anti- $\alpha 2\beta 1$  monoclonal antibody (mAb) (3  $\mu$ g/ml) markedly inhibited the PGE<sub>2</sub>-induced cell migration (Fig. 3F). On the other hand, EP1/3 agonist enhanced the cell surface expression of  $\alpha 2\beta 1$  integrin (Fig. 3G). Pretreatment of cells with SC19220 reduced PGE<sub>2</sub>-mediated  $\alpha 2\beta 1$  integrin expression (Fig. 3G). These data suggest that PGE<sub>2</sub>-induced cancer migration may occur via activation of the  $\alpha 2\beta 1$  integrin.

#### The PLC, PKC and c-Src signaling pathway is involved in PGE<sub>2</sub>-mediated integrin upregulation and cell migration of chondrosarcoma cells

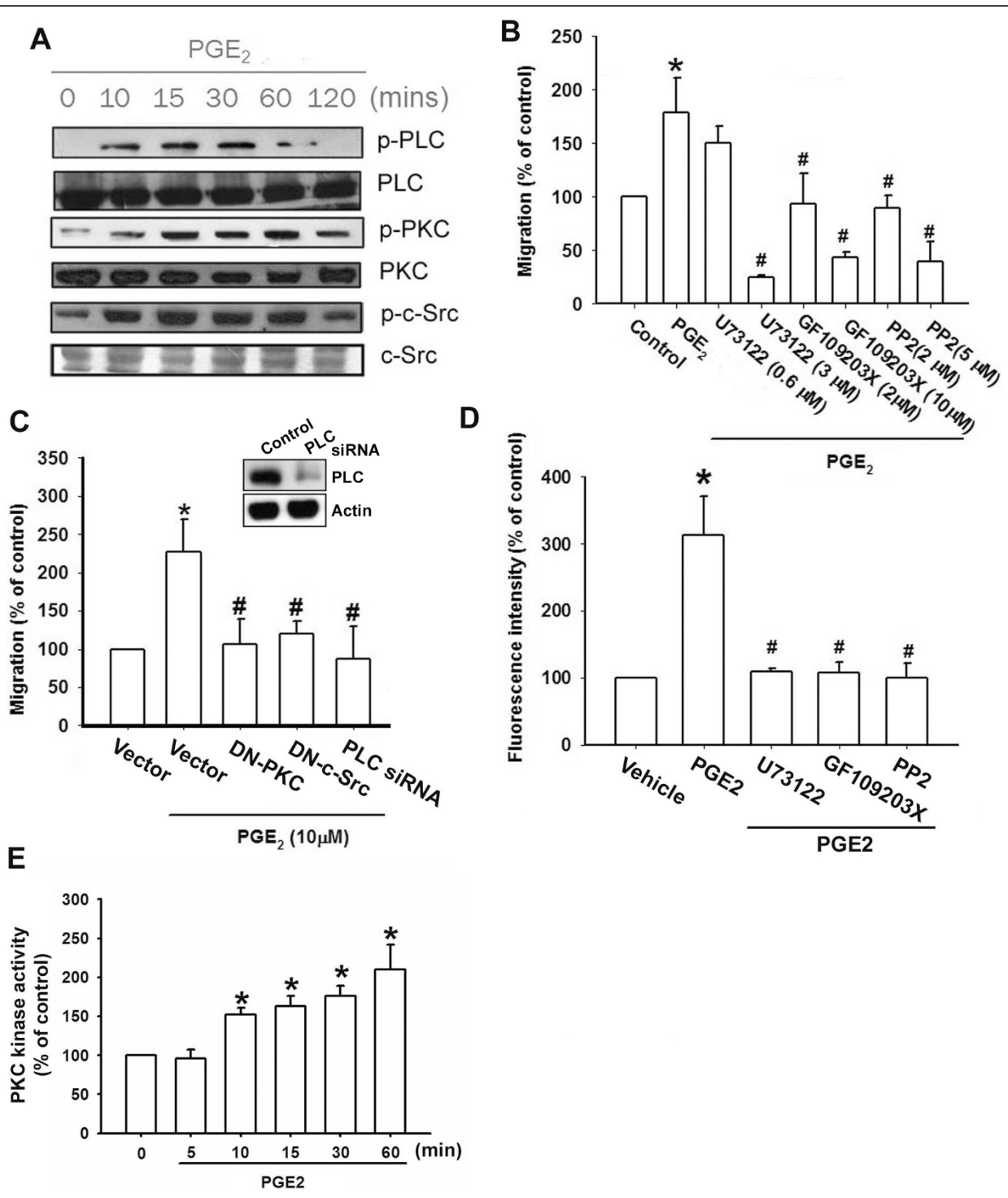
It has been reported that PLC/PKC/c-Src dependent pathway is involved in EP1-mediated bone formation [28]. We therefore directly measured the phosphorylation of PLC, PKC and c-Src in response to PGE<sub>2</sub>. Treatment of JJ012 cells with PGE<sub>2</sub> induced the phosphorylation of PLC $\beta 3$ , PKC $\alpha$  and c-Src time-dependently (Fig. 4A). In addition, PKC $\alpha$  activity was also increased by PGE<sub>2</sub> treatment of human chondrosarcoma cells time-dependently (Fig. 4E). Furthermore, pretreatment of cells with PI-PLC inhibitor (U73122), PKC inhibitor (GF109203X) and c-Src inhibitor (PP2) reduced PGE<sub>2</sub>-increased cell migration and integrin up-regulation (Fig. 4B&4D). Transfection of cells with PKC $\alpha$  and c-Src mutant or PLC $\beta$  siRNA also inhibited PGE<sub>2</sub>-mediated migration activity (Fig. 4C). Transfection of cells with PLC siRNA reduced



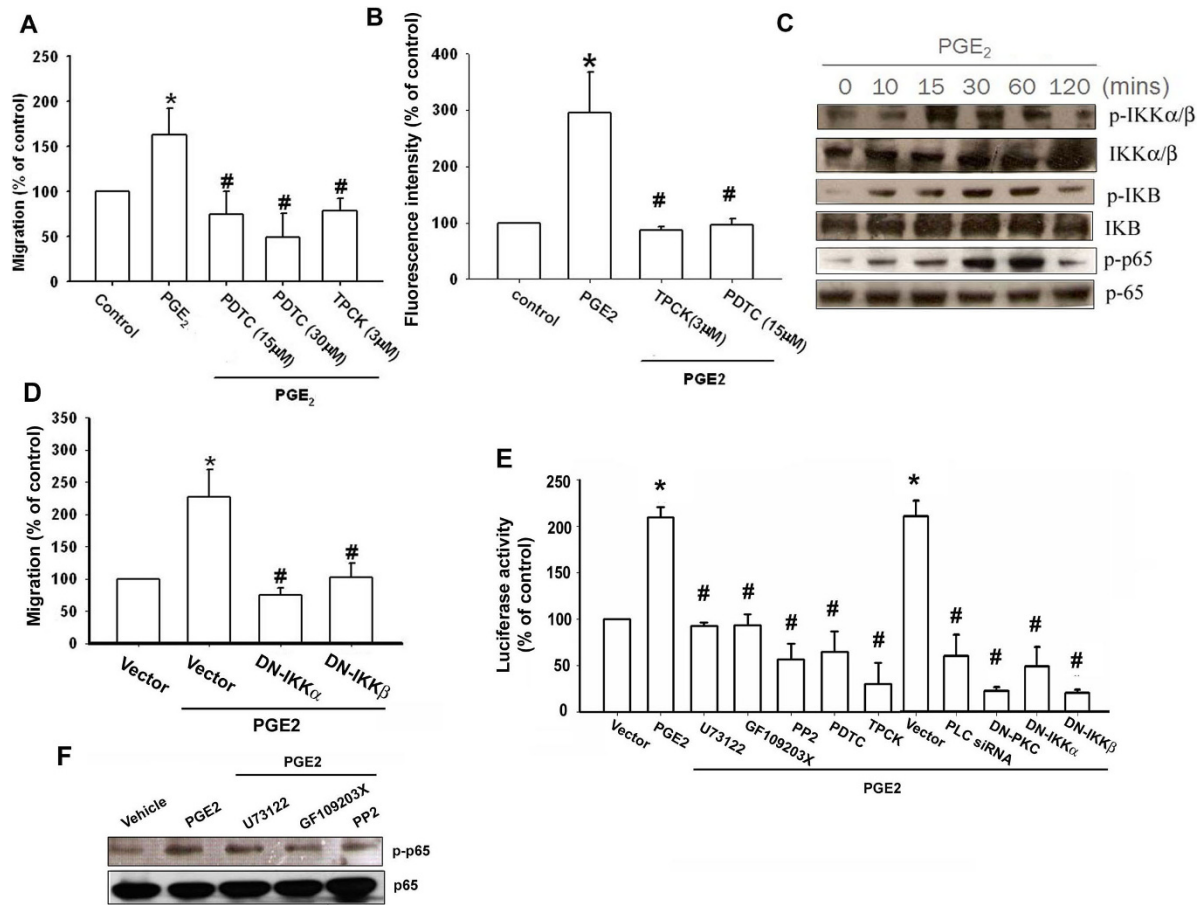
**Figure 2** EP1 receptor is involved in PGE<sub>2</sub>-mediated migration of human chondrosarcoma cells. (A) JJ012 cells were transfected with IPTG/COX-2 expression plasmid or control vector for 24 hr followed by stimulation with IPTG (5 mM) for 24 hr, the mRNA expression of EP receptors was determined by qPCR. (B) JJ012 cells were incubated with PGE<sub>2</sub> for 24 hr, and the mRNA expression of EP receptors was determined by qPCR. (C) Total RNA were extracted from normal cartilage (lines 1-4), chondrosarcoma patients (lines 5-8) or from chondrosarcoma cell lines (SW1353 and JJ012), and subjected to qPCR analysis for EP1 receptor. (D) JJ012 cells were 17-phenyl trinor PGE<sub>2</sub> (3 μM), butaprost (10 μM), sulprostone (10 μM), 11-deoxy-PGE<sub>1</sub> (10 μM) and PGE<sub>2</sub> plus SC19220 (10 μM), and *in vitro* migration activity measured with the Transwell after 24 hr. (E) Cells were transfected with EP receptors siRNA for 24 hr followed by stimulation with PGE<sub>2</sub>, and *in vitro* migration measured with the Transwell after 24 hr. Results are expressed as the mean ± S.E. \*, p < 0.05 compared with control; #, p < 0.05 compared with PGE<sub>2</sub>-treated group.



**Figure 3** COX-2-directed migration of human chondrosarcoma cells involves up-regulation of  $\alpha2\beta1$  integrin. (A) JJ012 cells were incubated with PGE<sub>2</sub> for 24 hr, and the cells surface  $\alpha5$ ,  $\alpha2$ ,  $\beta3$ ,  $\alpha5\beta1$ ,  $\alpha v\beta3$  and  $\alpha2\beta1$  integrin was determined using flow cytometry. (B) Cells were incubated with PGE<sub>2</sub> for 24 hr, and the mRNA levels of  $\alpha2$  and  $\beta1$  integrin was determined using qPCR. (C) JJ012 cells were transfected with IPTG/COX-2 expression plasmid or control vector for 24 hr followed by stimulation with IPTG (5 mM) for 24 hr, the mRNA expression of  $\alpha2$  and  $\beta1$  integrin was determined by qPCR. JJ012 cells were incubated with PGE<sub>2</sub> for indicated time intervals, and mRNA and cell surface  $\alpha2\beta1$  integrin were examined by qPCR (D) and flow cytometry (E). (F) Cells were pretreated with  $\alpha2\beta1$  monoclonal antibody (3  $\mu$ g/ml) for 30 min followed by stimulation with PGE<sub>2</sub>. The *in vitro* migration activity measured after 24 hr. (E) JJ012 cells were treated with 17-phenyl trinor PGE<sub>2</sub> (3  $\mu$ M), 11-deoxy-PGE<sub>1</sub> (10  $\mu$ M), PGE<sub>2</sub>, and PGE<sub>2</sub> plus SC19220 (10  $\mu$ M), and cells surface  $\alpha2\beta1$  integrin was determined using flow cytometry. Results are expressed as the mean  $\pm$  S.E. \*,  $p < 0.05$  compared with control; #,  $p < 0.05$  compared with PGE<sub>2</sub>-treated group.



**Figure 4 PLC/PKC/c-Src signaling pathway is involved in PGE<sub>2</sub>-mediated migration and integrin upregulation in human chondrosarcoma cells.** (A) JJ012 cells were incubated with PGE<sub>2</sub> for indicated time intervals, and p-PLCβ3, p-PKCα and p-c-Src expression was determined by Western blot analysis. (B&D) JJ012 cells were pretreated for 30 min with U73122, GF109203X or PP2. Then they were followed by stimulation with PGE<sub>2</sub>, and *in vitro* migration and cell surface α2β1 integrin were measured with the Transwell and flow cytometry after 24 hr. (C) Cells were transfected with PKCα or c-Src mutant and PLCβ siRNA for 24 hr followed by stimulation with PGE<sub>2</sub>, and *in vitro* migration measured with the Transwell after 24 hr. JJ012 cells were incubated with PGE<sub>2</sub> for indicated time intervals, and PKCα activity was determined by the PKCα kinase assay kit. Results are expressed as the mean ± S.E. \*, p < 0.05 compared with control; #, p < 0.05 compared with PGE<sub>2</sub>-treated group



**Figure 5 PGE<sub>2</sub> induces  $\alpha 2\beta 1$  integrin upregulation and cell migration through NF- $\kappa$ B activation.** Cells were pretreated with PDTC or TPCK for 30 min, then they were followed by stimulation with PGE<sub>2</sub>, and *in vitro* migration (A) and  $\alpha 2\beta 1$  integrin expression (B) were measured with the Transwell and flow cytometry after 24 hr. (C) JJ012 cells were incubated with PGE<sub>2</sub> for indicated time intervals, p-IKK $\alpha/\beta$  and p-p65 expression was determined by Western blot analysis. (D) Cells were transfected with IKK $\alpha$  or IKK $\beta$  mutant for 24 hr followed by stimulation with PGE<sub>2</sub>, and *in vitro* migration measured with the Transwell after 24 hr. (E) Cells were pretreated with U73122, GF109203X, PP2, PDTC, TPCK, PDTC for 30 min or co-transfected with PLC $\beta$  siRNA, PKC $\alpha$  mutant, IKK $\alpha$  mutant, IKK $\beta$  mutant for 24 hr before incubation with PGE<sub>2</sub> for 24 hr. The NF- $\kappa$ B activity was measured. (F) Cells were pretreated with U73122, GF109203X or PP2 for 30 min followed stimulation with PGE<sub>2</sub> for 60 min, and p-p65 expression was examined by Western blot analysis. Results are expressed as the mean  $\pm$  S.E. \*,  $p < 0.05$  compared with control; #,  $p < 0.05$  compared with PGE<sub>2</sub>-treated group

PLC expression (Fig. 4C; upper panel). Based on these results, it appears that PGE<sub>2</sub> acts through the PLC $\beta$ , PKC $\alpha$  and c-Src dependent signaling pathway to enhance  $\alpha 2\beta 1$  integrin expression and cell migration in human chondrosarcoma cells.

#### NF- $\kappa$ B is involved in PGE<sub>2</sub>-mediated integrin upregulation and migration activity

As previously mentioned, NF- $\kappa$ B activation is necessary for the migration and invasion of human chondrosarcoma cells [27]. To examine whether NF- $\kappa$ B activation is involved in PGE<sub>2</sub>-induced cancer migration, an NF- $\kappa$ B inhibitor, PDTC, was used. Fig. 5A&5B show that chondrosarcoma cells pretreated with PDTC inhibited the PGE<sub>2</sub>-induced migration and integrin expression of

chondrosarcoma cells. Furthermore, cells pretreated with TPCK (3  $\mu$ M), an I $\kappa$ B protease inhibitor, also reduced PGE<sub>2</sub>-induced migration of cancer cells (Fig. 5A&5B). Therefore, the NF- $\kappa$ B pathway has a role in PGE<sub>2</sub> induced migration of chondrosarcoma cells. We further examined the upstream molecules involved in PGE<sub>2</sub>-induced NF- $\kappa$ B activation. Stimulation of cells with PGE<sub>2</sub> induced IKK $\alpha/\beta$  phosphorylation in a time-dependent manner (Fig. 5C). Furthermore, transfection with IKK $\alpha$  or IKK $\beta$  mutant markedly inhibited the PGE<sub>2</sub>-induced cell migration (Fig. 5D). These data suggest that IKK $\alpha/\beta$  activation is involved in PGE<sub>2</sub>-induced the migration activity of human chondrosarcoma cells. Treatment of chondrosarcoma cells with PGE<sub>2</sub> also caused I $\kappa$ B $\alpha$  phosphorylation in a time-dependent manner (Fig. 5C).



Previous studies showed that p65 Ser<sup>536</sup> phosphorylation increases NF- $\kappa$ B transactivation [29]. Therefore, the antibody specific against phosphorylated p65 Ser<sup>536</sup> was employed to examine p65 phosphorylation. Treatment of cells with PGE<sub>2</sub> for various time intervals resulted in p65 Ser<sup>536</sup> phosphorylation (Fig. 5C). To directly determine NF- $\kappa$ B activation after PGE<sub>2</sub> treatment, chondrosarcoma cells were transiently transfected with  $\kappa$ B-luciferase as an indicator of NF- $\kappa$ B activation. As shown in Fig 5E, PGE<sub>2</sub> treatment of chondrosarcoma cells for 24 hr caused increase in  $\kappa$ B-luciferase activity. In addition, U73122, GF109203X, PP2, PDTC and TPCK or PLC $\beta$  siRNA, PKC $\alpha$ , IKK $\alpha$  and IKK $\beta$  mutant reduced PGE<sub>2</sub>-mediated NF- $\kappa$ B activity (Fig. 5E). Furthermore, U73122, GF109203X and PP2 reduced PGE<sub>2</sub>-mediated p65 phosphorylation (Fig. 5F). Taken together, these data suggest that activation of EP1 receptor, PLC, PKC and c-Src pathway is required for PGE<sub>2</sub>-induced NF- $\kappa$ B activation in chondrosarcoma cells.

## Discussion

The elucidation of the molecular biology of cancer cells in recent years has identified various molecular pathways that are altered in different cancers. This information is currently being exploited to develop potential therapeutic targets. To achieve metastasis, cancer cells must evade or co-opt multiple rules and barriers. Several discrete steps are discernible in the biological cascade of metastasis: loss of cellular adhesion, increased motility and invasiveness, entry and survival in circulation, exit into new tissue, and eventual colonization of a distant site [30]. The mechanism of metastasis is a complicated and multistage process. Here, we provide evidence that  $\alpha$ 2 $\beta$ 1 integrin acts as a crucial transducer of cell signaling, regulating cell migration and COX-2 act as a critical mediator of the metastatic activity of cancer cells in the tumor microenvironment. In addition,  $\alpha$ 2 $\beta$ 1 integrin mAb, U73122, GF109203X, PP2, PDTC, TPCK, PLC siRNA, PKC mutant, c-Src mutant, IKK $\alpha$  mutant and IKK $\beta$  mutant reduced PGE<sub>2</sub>-mediated cell migration in SW1353 cells (Additional file 1 - Figure S1). Furthermore, U73122, GF109203X, PP2, PDTC and TPCK also abolished PGE<sub>2</sub>-increased  $\alpha$ 2 $\beta$ 1 integrin expression in SW1353 cells (Additional file 2 - Figure S2). Therefore, the same signaling pathways are involved in all chondrosarcoma cells. Moreover,  $\alpha$ 2 $\beta$ 1 integrin mAb, U73122, GF109203X, PP2, PDTC, TPCK and EP1 siRNA reduced PGE<sub>2</sub>-mediated cell invasion in JJ012 cells [Transwell filters were precoated with Matrigel basement membrane matrix (BD Biosciences, Bedford, MA)] (Additional file 3 - Figure S3). Therefore, the same signaling pathways are involved in PGE<sub>2</sub>-mediated cell invasion in human chondrosarcoma cells.

COX-2 is a pleiotropic enzyme that mediates many physiological functions such as inhibition of cell

apoptosis, augmentation of angiogenesis, as well as increased cell motility. These COX-2-mediated functions are mediated in part by various genes such as B-cell lymphoma-2 [31], myeloid cell leukemia-1, VEGF-A [32] and metalloproteinases [33]. However, the effect of COX-2 on migration activity in human chondrosarcoma cells is mostly unknown. Using qPCR analysis, we found that the expression of mRNA levels of COX-2 in human chondrosarcoma tissues and chondrosarcoma cell lines were significantly higher than those in normal cartilage. In this study, we used osteoarthritic cartilage to referee normal cartilage. However, cartilage from osteoarthritic patients may up-regulation COX-2 compared with normal cartilage. Therefore, the expression of COX-2 between normal cartilage, osteoarthritic cartilage and chondrosarcoma needs further examination. On the other hand, most of patient samples were isolated from low grade chondrosarcoma patients. Notably, grade 1 chondrosarcomas are not considered clinically overtly malignant or even locally aggressive lesion. Therefore, it might be possible that increased COX-2 expression was a result of inflammation for metaplasia. The expression of COX-2 in high grade chondrosarcomas are needed further examination. Moreover, primary chondrosarcoma cells and SW1353 or JJ012 cell lines were more migratory than normal chondrocyte. Our data provided the evidence that the expression of COX-2 is associated with a metastatic phenotype of chondrosarcoma cells. COX-2 exert its effects through interaction with specific EP1-4 receptors [10-14]. However, the expression of EP receptors in chondrosarcoma cells is largely unknown. We found that the chondrosarcoma cells expressed EP1-4 receptors. However, EP1 but not other EP receptors was required for PGE<sub>2</sub>-induced migration activity. Treatment with butaprost (EP2 agonist), and 11-deoxy-PGE1 (EP2/EP4 selective agonist) failed to up-regulate cell migration. Furthermore, EP1 but not EP3 siRNA inhibited PGE<sub>2</sub>-induced cell migration. Therefore, our data suggest a critical role for EP1 receptor in the PGE<sub>2</sub>-mediated cell migration in human chondrosarcoma cells.

Integrins link the extracellular matrix to intracellular cytoskeletal structures and signaling molecules and are implicated in the regulation of a number of cellular processes, including adhesion, signaling, motility, survival, gene expression, growth and differentiation [3,34]. Using flow cytometry analysis, we found that PGE<sub>2</sub> increased  $\alpha$ 2 $\beta$ 1 but not  $\alpha$ 5,  $\beta$ 3,  $\alpha$ 5 $\beta$ 1 or  $\alpha$ v $\beta$ 3 integrin expression, which plays an important role during tumor metastasis. Furthermore, PGE<sub>2</sub> also increased the mRNA levels of  $\alpha$ 2 and  $\beta$ 1 integrins. In addition, over-expression COX-2 increased the mRNA expression of  $\alpha$ 2 and  $\beta$ 1 integrins. It has been often reported that  $\alpha$ 2 $\beta$ 1 integrin has revealed the ability to act as critical molecules as regards metastasis the ability of chondrosarcoma cells [35]. In

addition, activation of  $\alpha 2\beta 1$  integrin intracellular signal increased migration activity of chondrosarcoma cells [35]. Similarly, it was found that elevated expression of Cyr61 induced gastric cancer cell migration through  $\alpha 2\beta 1$  integrin [36]. Kawashima et al., also reported that tumour necrosis factor alpha induced migration of osteosarcoma cells via  $\alpha 2\beta 1$  integrin [37]. Collectively, our data also reveal that COX-2 and its downstream effector integrin  $\alpha 2\beta 1$ , could constitute a potential target for future treatment of metastasis of chondrosarcoma cells.

It has been reported that PLC/PKC/c-Src dependent pathway is involved in EP1 receptor signaling [28]. In present study, we found PGE<sub>2</sub> increased PLC $\beta$ 3 phosphorylation in JJ012 cells. Several isoforms of PKC have been characterized at the molecular level and these have been found to mediate several cellular molecular responses [38]. We demonstrated that PKC inhibitor GF109203X antagonized the PGE<sub>2</sub>-mediated potentiation of migration activity and integrin expression, suggesting that PKC activation is an obligatory event in PGE<sub>2</sub>-induced  $\alpha 2\beta 1$  integrin expression in these cells. This was further confirmed by the result that the dominant negative mutant of PKC $\alpha$  inhibited the enhancement of migration activity by PGE<sub>2</sub>. Src, a tyrosin kinase, plays a critical role in the induction of chemokine transcription [39]. In human aortic endothelial cells, oxidized phospholipids induce IL-8 expression through c-Src activation [39]. As c-Src has been reported to be a downstream effector of G protein-coupled receptor [40], we examined the potential role of c-Src in the signaling pathway of PGE<sub>2</sub>-induced cell migration and integrin expression. We found that treatment of chondrosarcoma cells with PGE<sub>2</sub> induced increases in c-Src phosphorylation at Tyr416. Taken together, our results provide evidence that PGE<sub>2</sub> up-regulates cell migration and integrin expression in human chondrosarcoma cells via the EP1/PLC/PKC $\alpha$ /c-Src signaling pathway.

## Conclusions

The prognosis for patients with chondrosarcoma distant metastasis is generally considered very poor; hence, prevention of human chondrosarcoma metastasis is very important. In our study we observed that COX-2 increases the activity of  $\alpha 2\beta 1$  integrin via the EP1, PLC, PKC $\alpha$ , c-Src, and NF- $\kappa$ B-dependent pathway and enhances migration of human chondrosarcoma cells. Furthermore, the discovery of COX-2-mediated signaling pathway increases our understanding of the mechanism of human chondrosarcoma metastasis and may help us to develop more effective therapies in the future. Taken together, our data suggest that COX2/EP1 interaction plays a novel role in regulating chondrosarcoma cell migration/invasion in a clinical/experimental setting, and it would also appear to be feasible as a biological

marker to predict the relative likelihood/extent of metastasis following chondrosarcoma cell migration.

## Methods

### Materials

Anti-mouse and anti-rabbit IgG-conjugated horseradish peroxidase, rabbit polyclonal antibodies specific for PLC $\beta$ , PKC $\alpha$ , c-Src, IKK, p-I $\kappa$ B $\alpha$ , I $\kappa$ B $\alpha$ , p65 and the siRNAs against PLC $\beta$  and control (negative control for experiments using targeted siRNA transfection; each consisted of a scrambled sequence that would not lead to the specific degradation of any known cellular mRNA) were purchased from Santa Cruz Biotechnology (Santa Cruz, CA, USA). Rabbit polyclonal antibody specific for p-IKK $\alpha$ / $\beta$ , p-PLC $\beta$ 3, p-PKC $\alpha$ , p-c-Src and p-p65 were purchased from Cell Signaling and Neuroscience (Danvers, MA). Rabbit polyclonal antibodies specific for  $\alpha 2$ ,  $\alpha 5$ ,  $\beta 3$ ,  $\alpha \nu \beta 3$ ,  $\alpha 5\beta 1$  and  $\alpha 2\beta 1$  integrin were purchased from Chemicon (Temecula, CA). PGE<sub>2</sub>, 17-phenyl trinor PGE<sub>2</sub>, butaprost, sulprostone, 11-deoxy-PGE<sub>1</sub>, SC19220 and rabbit polyclonal antibody specific for COX-2, EP1 and EP3 were purchased from Cayman Chemical (Ann Arbor, MI). Valeryl salicylate, NS398, U73122, GF109203X, PP2, PDK1, TPCK and IPTG (isopropyl- $\beta$ -D-thiogalactopyranoside) were obtained from Calbiochem (San Diego, CA). Celebrex was obtained from Pharmacia Co. (Piscataway, NJ). ON-TARGET smart pool EP1 and EP3 siRNA and ON-TARGET plus siCONTROL Nontargeting pool siRNA were purchased from Dharmacon. The COX-2 IPTG-induced expression plasmid, p-NLR-COX2 was a gift from Dr. W. M. Fu (National Taiwan University) [41]. The IKK $\alpha$ (KM) and IKK $\beta$ (KM) mutants were gifts from Dr. H. Nakano (Juntendo University, Tokyo, Japan). The PKC $\alpha$  dominant negative mutant was a gift from Dr. V. Martin (Louis Pasteur de Strasbourg University, France). The c-Src dominant negative mutant was a gift from Dr. S. Parsons (University of Virginia Health System, Charlottesville, VA). The NF- $\kappa$ B luciferase plasmid was purchased from Stratagene (La Jolla, CA) and luciferase assay kit was purchased from Promega (Madison, MA, USA). All other chemicals were obtained from Sigma-Aldrich (St. Louis, MO, USA).

### Cell culture

The human chondrosarcoma cell line (JJ012) was kindly provided by the laboratory of Dr. Sean P Scully (University of Miami School of Medicine, Miami, FL, USA). The JJ012 cells were cultured in DMEM/ $\alpha$ -MEM supplemented with 10% fetal bovine serum (FBS) and maintained at 37°C in a humidified atmosphere of 5% CO<sub>2</sub>. The human chondrosarcoma cell line (SW1353) was obtained from the American Type Culture Collection. The cells were cultured in DMEM/ $\alpha$ -MEM supplemented with 10% FBS and maintained at 37°C in a humidified atmosphere of 5% CO<sub>2</sub>.

### Migration assay

The migration assay was performed using Transwell (Costar, NY; pore size, 8- $\mu$ m) in 24-well dishes. Before the migration assay was performed, cells were pretreated for 30 min with different concentrations of inhibitors, including the U73122, GF109203X, PP2, PDTC, TPCK or vehicle control (0.1% DMSO). Approximately  $1 \times 10^4$  cells in 100  $\mu$ l of serum-free medium were placed in the upper chamber, and 300  $\mu$ l of the same medium containing PGE<sub>2</sub> was placed in the lower chamber. The plates were incubated for 24 h at 37°C in 5% CO<sub>2</sub>, then cells were fixed in methanol for 15 min and stained with 0.05% crystal violet in PBS for 15 min. Cells on the upper side of the filters were removed with cotton-tipped swabs, and the filters were washed with PBS. Cells on the underside of the filters were examined and counted under a microscope. Each clone was plated in triplicate in each experiment, and each experiment was repeated at least three times. The number of migrating cells in each experiment was adjusted by the cell viability assay to correct for proliferation effects of the PGE<sub>2</sub> treatment (corrected migrating cell number = counted migrating cell number/percentage of viable cells) [42].

### Flow Cytometric Analysis

Human chondrosarcoma cells were plated in six-well dishes. The cells were then washed with PBS and detached with trypsin at 37°C. Cells were fixed for 10 min in PBS containing 1% paraformaldehyde. After rinsing in PBS, the cells were incubated with rabbit anti-human antibody against  $\alpha 2$ ,  $\alpha 5$ ,  $\beta 3$ ,  $\alpha \nu \beta 3$ ,  $\alpha 5 \beta 1$  or  $\alpha 2 \beta 1$  integrin (1:100) for 1 h at 4°C. Cells were then washed again and incubated with fluorescein isothiocyanate-conjugated goat anti-rabbit secondary IgG (1:150; Leinco Tec. Inc., St. Louis, MO, USA) for 45 min and analyzed by flow cytometry using FACS Calibur and CellQuest software (BD Biosciences, Palo Alto, CA, USA).

### Western blot analysis

The cellular lysates were prepared as described previously [43]. Proteins were resolved on SDS-PAGE and transferred to Immobilon polyvinylidene difluoride (PVDF) membranes. The blots were blocked with 4% BSA for 1 hr at room temperature and then probed with rabbit anti-human antibodies against p-PLC $\beta 3$ , p-PKC $\alpha$ , p-c-Src or p-p65 (1:1000) for 1 hr at room temperature. After three washes, the blots were subsequently incubated with a donkey anti-rabbit peroxidase-conjugated secondary antibody (1:1000) for 1 hr at room temperature. The blots were visualized by enhanced chemiluminescence using Kodak X-OMAT LS film (Eastman Kodak, Rochester, NY, USA).

### PKC kinase activity assay

PKC activity was assessed by a PKC Kinase Activity Assay Kit according to manufacturer's instructions (Assay Designs, MI). The PKC activity kit is based on a solid-phase ELISA that uses a specific synthetic peptide as a substrate for PKC and a polyclonal antibody that recognized the phosphorylated form of the substrate.

### Reporter assay

The chondrosarcoma cells were transfected with reporter plasmid using Lipofectamine 2000 (Invitrogen) according to the manufacturer's recommendations. Twenty-four hours after transfection, the cells were treated with inhibitors for 30 min, and then PGE<sub>2</sub> or vehicle was added for another 24 hr. Cell extracts were then prepared, and luciferase and  $\beta$ -galactosidase activities were measured [42,44].

### Quantitative real time PCR

Total RNA was extracted from cancer cells using a TRIzol kit (MDBio, Taipei, Taiwan). The reverse transcription reaction was performed using 2  $\mu$ g of total RNA that was reversely transcribed into complementary DNA using oligo(dT) primer. The quantitative real time PCR (qPCR) analysis was carried out using a Taqman<sup>®</sup> one-step PCR Master Mix (Applied Biosystems, CA, USA). One hundred ng of total cDNA were added per 25- $\mu$ l reaction with sequence-specific primers and Taqman<sup>®</sup> probes. Sequences for all target gene primers and probes were purchased commercially [GAPDH was used as internal control (Applied Biosystems, CA, USA)]. qPCR assays were carried out in triplicate with an StepOne-Plus sequence detection system. The cycling conditions were 10-min polymerase activation at 95°C followed by 40 cycles at 95 °C for 15 s and 60 °C for 60 s. The threshold was set above the non-template control background and within the linear phase of target gene amplification in order to calculate the cycle number at which the transcript was detected (denoted C<sub>T</sub>).

### Patients and specimen preparation

Upon approval by the local ethics committee, specimens of tumor tissue or normal cartilage tissue were obtained from patients, who had been pathologically diagnosed with chondrosarcoma or knee osteoarthritis (the articular cartilage was collected) and had undergone surgical resection at the China Medical University Hospital. The chondrosarcoma patient group consisted of 6 females and 11 males and ranged in age from 22 to 68 years (mean, 48 years). The histologic grade of chondrosarcoma was checked. Cytologically, increased cellularity and cytological atypia are the most important features,

and these characteristics are used to determine the grade of the chondrosarcoma [45]. Eleven patients were alive without disease, one was alive with disease, two died without disease, and three died of causes secondary to progressive disease. The overall survival estimate at 5 years was 90%. The recurrence rate for patients with adequate surgical margins was 10%, compared with 75% for patients with inadequate margins. Tissue specimens were ground and then sonicated in a TRIzol kit. The mRNA level was analyzed using qPCR analysis.

For primary cultures from human chondrosarcoma cells, the samples were cleaned of surrounding fat, connective tissue and blood vessels. Thereafter, tissue samples were minced into pieces using a razor blade. Minced samples were transferred into 50 ml Falcon tubes, spun down at 1000 r.p.m. for 5 min and rinsed twice with fresh PBS. Digestion was performed with 1 mg collagenase II/ml PBS at 37°C for 50 min in a shaking water bath. Cell suspension was pipetted up and down at least twice during incubation. After digestion, pure FBS was added to a minimum concentration of 10% to inactivate the collagenase, followed by a centrifugation step as described above. Cells were then cultured in Dulbecco's modified Eagle's medium/ $\alpha$ -modified Eagle medium supplemented with 10% FBS and maintained at 37°C in a humidified atmosphere of 5% CO<sub>2</sub> [46].

Primary cultures of human chondrocytes were isolated from articular cartilage as described previously [47]. The cells were grown in plastic cell culture dishes in 95% air-5% CO<sub>2</sub> with Dulbecco's modified Eagle's medium which was supplemented with 10% FBS, 2 mM-glutamine, penicillin (100 U/ml) and streptomycin (100  $\mu$ g/ml).

### Statistics

The values given are means  $\pm$  S.E.M. The significance of difference between the experimental groups and controls was assessed by Student's t test. The difference was considered significant if the *p* value was < 0.05.

**Additional file 1: PLC/PKC/c-Src and NF- $\kappa$ B pathways are involved in PGE<sub>2</sub>-mediated cell migration in human chondrosarcoma cells.** (A) SW1353 cells were incubated with various concentrations of PGE<sub>2</sub>, and *in vitro* migration activity measured with the Transwell after 24 hr showed all supported the cell migration in a dose-dependent way. SW1353 cells were pretreated for 30 min with U73122, GF109203X, PP2 (B), PDTC, TPCK (C) and  $\alpha$ 2 $\beta$ 1 integrin mAb (E) followed by stimulation with PGE<sub>2</sub>, and *in vitro* migration was measured with the Transwell after 24 hr. SW1353 cells were transfection for 24 hr with IKK $\alpha$ , IKK $\beta$ , PKC and c-Src mutant or PLC siRNA followed by stimulation with PGE<sub>2</sub>, and *in vitro* migration was measured with the Transwell after 24 hr. Results are expressed as the mean  $\pm$  S.E. \*, *p* < 0.05 compared with control; #, *p* < 0.05 compared with PGE<sub>2</sub>-treated group  
Click here for file  
[<http://www.biomedcentral.com/content/supplementary/1476-4598-9-43-S1.DOC>]

**Additional file 2: PLC/PKC/c-Src and NF- $\kappa$ B pathways are involved in PGE<sub>2</sub>-mediated integrin up-regulation in human chondrosarcoma cells.** (A) SW1353 cells were incubated with PGE<sub>2</sub> for 24 hr, and the cells surface  $\alpha$ 5,  $\beta$ 3,  $\alpha$ 5 $\beta$ 1,  $\alpha$ v $\beta$ 3 and  $\alpha$ 2 $\beta$ 1 integrin was determined using flow cytometry. (B) SW1353 cells were pretreated for 30 min with U73122, GF109203X, PP2, PDTC and TPCK followed by stimulation with PGE<sub>2</sub>, and cells surface  $\alpha$ 2 $\beta$ 1 integrin was determined using flow cytometry. Results are expressed as the mean  $\pm$  S.E. \*, *p* < 0.05 compared with control; #, *p* < 0.05 compared with PGE<sub>2</sub>-treated group  
Click here for file  
[<http://www.biomedcentral.com/content/supplementary/1476-4598-9-43-S2.DOC>]

**Additional file 3: EP1/PLC/PKC/c-Src and NF- $\kappa$ B pathways are involved in PGE<sub>2</sub>-mediated cell invasion in human chondrosarcoma cells.** JJ012 cells were pretreated for 30 min with  $\alpha$ 2 $\beta$ 1 integrin mAb, U73122, GF109203X, PP2, PDTC and TPCK or transfection for 24 hr with EP1 siRNA followed by stimulation with PGE<sub>2</sub>, and *in vitro* invasion was measured with the Transwell [filters were precoated with Matrigel basement membrane matrix (BD Biosciences, Bedford, MA)] after 24 hr. Results are expressed as the mean  $\pm$  S.E. \*, *p* < 0.05 compared with control; #, *p* < 0.05 compared with PGE<sub>2</sub>-treated group  
Click here for file  
[<http://www.biomedcentral.com/content/supplementary/1476-4598-9-43-S3.DOC>]

### Acknowledgements

This study was supported by grants from the National Science Council of Taiwan (NSC98-2314-B-039-005-MY3), China Medical University (CMU98-S-17), China Medical University Hospital (DMR-99-082; DMR-99-083; DMR-99-085).

### Author details

<sup>1</sup>Graduate Institute of Pharmaceutical Chemistry, China Medical University, Taichung, Taiwan. <sup>2</sup>Department of Orthopaedics, China Medical University Hospital, Taichung, Taiwan. <sup>3</sup>School of Chinese Medicine, China Medical University, Taichung, Taiwan. <sup>4</sup>Department of Orthopaedic Surgery, China Medical University Beigang Hospital, Yun-Lin County, Taiwan. <sup>5</sup>Department of Pharmacology, China Medical University, Taichung, Taiwan. <sup>6</sup>Department of Surgery, China Medical University Hospital, Taichung, Taiwan. <sup>7</sup>Cancer Institute, China Medical University Hospital, Taichung, Taiwan. <sup>8</sup>Graduate Institute of Basic Medical Science, China Medical University, Taichung, Taiwan.

### Authors' contributions

Conceived and designed the experiments: CT  
Performed the experiments: JL, YF and CC  
Analyzed the data and provided the suggests: CHu, HC, WY, CHs and LJ.  
All authors read and approved the final manuscript.

### Competing interests

The authors declare that they have no competing interests.

Received: 22 July 2009

Accepted: 23 February 2010 Published: 23 February 2010

### References

1. Terek RM, Schwartz GK, Devaney K, Glantz L, Mak S, Healey JH, Albino AP: **Chemotherapy and P-glycoprotein expression in chondrosarcoma.** *J Orthop Res* 1998, **16**:585-590.
2. Yuan J, Dutton CM, Scully SP: **RNAi mediated MMP-1 silencing inhibits human chondrosarcoma invasion.** *J Orthop Res* 2005, **23**:1467-1474.
3. Warner TD, Mitchell JA: **Cyclooxygenases: new forms, new inhibitors, and lessons from the clinic.** *FASEB J* 2004, **18**:790-804.
4. Morita I: **Distinct functions of COX-1 and COX-2.** *Prostaglandins Other Lipid Mediat* 2002, **68-69**:165-175.
5. Turini ME, DuBois RN: **Cyclooxygenase-2: a therapeutic target.** *Annu Rev Med* 2002, **53**:35-57.

6. Sano H, Kawahito Y, Wilder RL, Hashiramoto A, Mukai S, Asai K, Kimura S, Kato H, Kondo M, Hla T: **Expression of cyclooxygenase-1 and -2 in human colorectal cancer.** *Cancer Res* 1995, **55**:3785-3789.
7. Hida T, Yatabe Y, Achiwa H, Muramatsu H, Kozaki K, Nakamura S, Ogawa M, Mitsudomi T, Sugiura T, Takahashi T: **Increased expression of cyclooxygenase 2 occurs frequently in human lung cancers, specifically in adenocarcinomas.** *Cancer Res* 1998, **58**:3761-3764.
8. Hwang D, Scollard D, Byrne J, Levine E: **Expression of cyclooxygenase-1 and cyclooxygenase-2 in human breast cancer.** *J Natl Cancer Inst* 1998, **90**:455-460.
9. Tucker ON, Dannenberg AJ, Yang EK, Zhang F, Teng L, Daly JM, Soslow RA, Masferrer JL, Woerner BM, Koki AT, Fahey TJ: **Cyclooxygenase-2 expression is up-regulated in human pancreatic cancer.** *Cancer Res* 1999, **59**:987-990.
10. Suzawa T, Miyaura C, Inada M, Maruyama T, Sugimoto Y, Ushikubi F, Ichikawa A, Narumiya S, Suda T: **The role of prostaglandin E receptor subtypes (EP1, EP2, EP3, and EP4) in bone resorption: an analysis using specific agonists for the respective EPs.** *Endocrinology* 2000, **141**:1554-1559.
11. Weinreb M, Machwate M, Shir N, Abramovitz M, Rodan GA, Harada S: **Expression of the prostaglandin E(2) (PGE(2)) receptor subtype EP(4) and its regulation by PGE(2) in osteoblastic cell lines and adult rat bone tissue.** *Bone* 2001, **28**:275-281.
12. Watabe A, Sugimoto Y, Honda A, Irie A, Namba T, Negishi M, Ito S, Narumiya S, Ichikawa A: **Cloning and expression of cDNA for a mouse EP1 subtype of prostaglandin E receptor.** *J Biol Chem* 1993, **268**:20175-20178.
13. Katsuyama M, Nishigaki N, Sugimoto Y, Morimoto K, Negishi M, Narumiya S, Ichikawa A: **The mouse prostaglandin E receptor EP2 subtype: cloning, expression, and northern blot analysis.** *FEBS Lett* 1995, **372**:151-156.
14. Sugimoto Y, Namba T, Honda A, Hayashi Y, Negishi M, Ichikawa A, Narumiya S: **Cloning and expression of a cDNA for mouse prostaglandin E receptor EP3 subtype.** *J Biol Chem* 1992, **267**:6463-6466.
15. Jain RK, Fenton BT: **Intratumoral lymphatic vessels: a case of mistaken identity or malfunction?** *J Natl Cancer Inst* 2002, **94**:417-421.
16. Humphries MJ: **Integrin structure.** *Biochem Soc Trans* 2000, **28**:311-339.
17. Yao ES, Zhang H, Chen YY, Lee B, Chew K, Moore D, Park C: **Increased beta1 integrin is associated with decreased survival in invasive breast cancer.** *Cancer Res* 2007, **67**:659-664.
18. Nikkola J, Vihinen P, Vlaykova T, Hahka-Kemppinen M, Heino J, Pyrhonen S: **Integrin chains beta1 and alphav as prognostic factors in human metastatic melanoma.** *Melanoma Res* 2004, **14**:29-37.
19. Muller-Klingspor V, Hefler L, Obermair A, Kaider A, Breitenecker G, Leodolte S, Kohlberger P: **Prognostic value of beta1-integrin (=CD29) in serous adenocarcinomas of the ovary.** *Anticancer Res* 2001, **21**:2185-2188.
20. Heyder C, Gloria-Maercker E, Hatzmann W, Niggemann B, Zanker KS, Dittmar T: **Role of the beta1-integrin subunit in the adhesion, extravasation and migration of T24 human bladder carcinoma cells.** *Clin Exp Metastasis* 2005, **22**:99-106.
21. Seales EC, Jurado GA, Brunson BA, Wakefield JK, Frost AR, Bellis SL: **Hypersialylation of beta1 integrins, observed in colon adenocarcinoma, may contribute to cancer progression by up-regulating cell motility.** *Cancer Res* 2005, **65**:4645-4652.
22. Takenaka K, Shibuya M, Takeda Y, Hibino S, Gemma A, Ono Y, Kudoh S: **Altered expression and function of beta1 integrins in a highly metastatic human lung adenocarcinoma cell line.** *Int J Oncol* 2000, **17**:1187-1194.
23. Rozic JG, Chakraborty C, Lala PK: **Cyclooxygenase inhibitors retard murine mammary tumor progression by reducing tumor cell migration, invasiveness and angiogenesis.** *Int J Cancer* 2001, **93**:497-506.
24. Kozaki K, Koshikawa K, Tatamatsu Y, Miyaiishi O, Saito H, Hida T, Osada H, Takahashi T: **Multi-faceted analyses of a highly metastatic human lung cancer cell line NCI-H460-LNM35 suggest mimicry of inflammatory cells in metastasis.** *Oncogene* 2001, **20**:4228-4234.
25. Fulton AM, Ma X, Kundu N: **Targeting prostaglandin E EP receptors to inhibit metastasis.** *Cancer Res* 2006, **66**:9794-9797.
26. Fedorov Y, Anderson EM, Birmingham A, Reynolds A, Karpilow J, Robinson K, Leake D, Marshall WS, Khvorova A: **Off-target effects by siRNA can induce toxic phenotype.** *RNA* 2006, **12**:1188-1196.
27. Lai TH, Fong YC, Fu WM, Yang RS, Tang CH: **Stromal cell-derived factor-1 increase alphavbeta3 integrin expression and invasion in human chondrosarcoma cells.** *J Cell Physiol* 2009, **218**:334-342.
28. Tang CH, Yang RS, Fu WM: **Prostaglandin E2 stimulates fibronectin expression through EP1 receptor, phospholipase C, protein kinase Calpha, and c-Src pathway in primary cultured rat osteoblasts.** *J Biol Chem* 2005, **280**:22907-22916.
29. Madrid LV, Mayo MW, Reuther JY, Baldwin AS Jr: **Akt stimulates the transactivation potential of the RelA/p65 Subunit of NF-kappa B through utilization of the I kappa B kinase and activation of the mitogen-activated protein kinase p38.** *J Biol Chem* 2001, **276**:18934-18940.
30. Gupta GP, Massague J: **Cancer metastasis: building a framework.** *Cell* 2006, **127**:679-695.
31. Sun Y, Tang XM, Half E, Kuo MT, Sinicrope FA: **Cyclooxygenase-2 overexpression reduces apoptotic susceptibility by inhibiting the cytochrome c-dependent apoptotic pathway in human colon cancer cells.** *Cancer Res* 2002, **62**:6323-6328.
32. Ma L, del Soldato P, Wallace JL: **Divergent effects of new cyclooxygenase inhibitors on gastric ulcer healing: Shifting the angiogenic balance.** *Proc Natl Acad Sci USA* 2002, **99**:13243-13247.
33. Dohadwala M, Batra RK, Luo J, Lin Y, Krysan K, Pold M, Sharma S, Dubinett SM: **Autocrine/paracrine prostaglandin E2 production by non-small cell lung cancer cells regulates matrix metalloproteinase-2 and CD44 in cyclooxygenase-2-dependent invasion.** *J Biol Chem* 2002, **277**:50828-50833.
34. Smith WL, DeWitt DL, Garavito RM: **Cyclooxygenases: structural, cellular, and molecular biology.** *Annu Rev Biochem* 2000, **69**:145-182.
35. Chiu YC, Shieh DC, Tong KM, Chen CP, Huang KC, Chen PC, Fong YC, Hsu HC, Tang CH: **Involvement of AdipoR receptor in adiponectin-induced motility and alpha2beta1 integrin upregulation in human chondrosarcoma cells.** *Carcinogenesis* 2009, **30**:1651-1659.
36. Lin MT, Chang CC, Lin BR, Yang HY, Chu CY, Wu MH, Kuo ML: **Elevated expression of Cyr61 enhances peritoneal dissemination of gastric cancer cells through integrin alpha2beta1.** *J Biol Chem* 2007, **282**:34594-34604.
37. Kawashima A, Kawahara E, Tokuda R, Nakanishi I: **Tumour necrosis factor-alpha provokes upregulation of alpha2beta1 and alpha5beta1 integrins, and cell migration in OST osteosarcoma cells.** *Cell Biol Int* 2001, **25**:319-329.
38. Berk BC, Taubman MB, Cragoe EJ Jr, Fenton JW, Griendling KK: **Thrombin signal transduction mechanisms in rat vascular smooth muscle cells. Calcium and protein kinase C-dependent and -independent pathways.** *J Biol Chem* , 2 1990, **265**:17334-17340.
39. Yeh M, Gharavi NM, Choi J, Hsieh X, Reed E, Moullisieux KP, Cole AL, Reddy ST, Berliner JA: **Oxidized phospholipids increase interleukin 8 (IL-8) synthesis by activation of the c-src/signal transducers and activators of transcription (STAT)3 pathway.** *J Biol Chem* 2004, **279**:30175-30181.
40. Yang M, Zhang H, Voyno-Yasenetskaya T, Ye RD: **Requirement of Gbetagamma and c-Src in D2 dopamine receptor-mediated nuclear factor-kappaB activation.** *Mol Pharmacol* 2003, **64**:447-455.
41. Su JL, Shih JY, Yen ML, Jeng YM, Chang CC, Hsieh CY, Wei LH, Yang PC, Kuo ML: **Cyclooxygenase-2 induces EP1- and HER-2/Neu-dependent vascular endothelial growth factor-C up-regulation: a novel mechanism of lymphangiogenesis in lung adenocarcinoma.** *Cancer Res* 2004, **64**:554-564.
42. Tang CH, Tan TW, Fu WM, Yang RS: **Involvement of matrix metalloproteinase-9 in stromal cell-derived factor-1/CXCR4 pathway of lung cancer metastasis.** *Carcinogenesis* 2008, **29**:35-43.
43. Tan TW, Yang WH, Lin YT, Hsu SF, Li TM, Mao ST, Chen WC, Fong YC, Tang CH: **Cyr61 increases migration and MMP-13 expression via alphavbeta3 integrin, FAK, ERK and AP-1-dependent pathway in human chondrosarcoma cells.** *Carcinogenesis* 2009, **30**:258-268.
44. Liang JA, Wu SL, Lo HY, Hsiang CY, Ho TY: **Vanillin inhibits matrix metalloproteinase-9 expression through down-regulation of nuclear factor-kappaB signaling pathway in human hepatocellular carcinoma cells.** *Mol Pharmacol* 2009, **75**:151-157.
45. Fong YC, Dutton CM, Cha SS, Garamszegi N, Sim FH, Scully SP: **Absence of a correlation between the presence of a single nucleotide polymorphism in the matrix metalloproteinase 1 promoter and outcome in patients of chondrosarcoma.** *Clin Cancer Res* 2004, **10**:7329-7334.
46. Yang SN, Chen HT, Tsou HK, Huang CY, Yang WH, Su CM, Fong YC, Tseng WP, Tang CH: **Leptin enhances cell migration in human chondrosarcoma cells through OBRI leptin receptor.** *Carcinogenesis* 2009, **30**:566-574.

47. Hsu HC, Fong YC, Chang CS, Hsu CJ, Hsu SF, Lin JG, Fu WM, Yang RS, Tang CH: **Ultrasound induces cyclooxygenase-2 expression through integrin, integrin-linked kinase, Akt, NF-kappaB and p300 pathway in human chondrocytes.** *Cell Signal* 2007, **19**:2317-2328.

doi:10.1186/1476-4598-9-43

**Cite this article as:** Liu *et al.*: Cyclooxygenase-2 enhances  $\alpha 2\beta 1$  integrin expression and cell migration via EP1 dependent signaling pathway in human chondrosarcoma cells. *Molecular Cancer* 2010 **9**:43.

**Submit your next manuscript to BioMed Central  
and take full advantage of:**

- Convenient online submission
- Thorough peer review
- No space constraints or color figure charges
- Immediate publication on acceptance
- Inclusion in PubMed, CAS, Scopus and Google Scholar
- Research which is freely available for redistribution

Submit your manuscript at  
[www.biomedcentral.com/submit](http://www.biomedcentral.com/submit)

