

RESEARCH

Open Access



Bergapten drives autophagy through the up-regulation of PTEN expression in breast cancer cells

Francesca De Amicis^{1,2†}, Saveria Aquila^{1,2*†}, Catia Morelli¹, Carmela Guido², Marta Santoro², Ida Perrotta³, Loredana Mauro¹, Francesca Giordano¹, Alessandra Nigro³, Sebastiano Andò^{1,2*} and Maria L. Panno^{1*}

Abstract

Background: Bergapten (5-methoxypsoralen), a natural psoralen derivative present in many fruits and vegetables, has shown antitumoral effects in a variety of cell types. In this study, it has been addressed how Bergapten in breast cancer cells induces autophagic process.

Results: In MCF7 and ZR-75 breast cancer cells Bergapten exhibited anti-survival response by inducing the autophagic process increasing Beclin1, PI3KIII, UVRAG, AMBRA expression and conversion of LC3-I to LC3-II. LC3-GFP, Acridine orange assay and transmission electron microscopy even confirmed the increased autophagosome formations in treated cells. Bergapten-induced autophagy is dependent by PTEN up-regulation, since silencing this gene, the induction of Beclin1 and the p-AKT/p-mTOR signal down-regulation were reversed. PTEN is transcriptionally regulated by Bergapten through the involvement of p38MAPK/NF- κ B, as evidenced by the use of p38MAPK inhibitor SB203580, site-direct mutagenesis of NF- κ B element and NF- κ B siRNA. Furthermore NF- κ B knockdown prevented Bergapten-induced acid vesicular organelle accumulations (AVOs), strengthening the role of this element in mediating autophagy.

Conclusions: Our data indicate PTEN as a key target of Bergapten action in breast cancer cells for the induction of autophagy. These findings add further details on the mechanism of action of Bergapten, therefore suggesting that phytochemical compounds may be implemented in the novel strategies for breast cancer treatment.

Keywords: Cell survival, Psoralen, NF- κ B, PTEN, AKT

Background

Breast cancer is the most frequent malignant neoplasm of female in Europe and North America and breast cancerogenesis is still not fully recognized, due to many risk factors acting in a dynamic bio-molecular context. Besides, prognostic factors commonly used for the follow up of patients evidence an incomplete picture of the breast tumor biology [1].

The oncosuppressor gene PTEN (Phosphatase tensin homologue deleted from chromosome 10) is often mutated in hormone-related tumors among women, including

breast [2] and PTEN expression correlates negatively with neoplasm advancement grade [3]. PTEN codes protein/lipid phosphatase governing phosphatidylinositol 3-kinase (PI3K) signaling thus contributing to the control of the proliferation, differentiation and apoptotic process [4]. PTEN has also been shown to mediate autophagy in mammalian cells through its lipid phosphatase activity which antagonizes the inhibitory effect of the PI3K/AKT pathway on the autophagic sequestration that involves type III PI3-kinase [5].

The substantial evidence that the progression of breast cancer can be influenced by PI3K/AKT/mTOR, suggests the use of specific inhibitors as component of therapeutic portfolio that could be able to increase the expression of oncosuppressor PTEN.

In recent years, many naturally occurring compounds, sometimes present in the diet have gained considerable

* Correspondence: saveria.aquila@libero.it; sebastiano.ando@unical.it; mamissina@yahoo.it

†Equal contributors

¹Department of Pharmacy, Health and Nutritional Sciences, University of Calabria, 87036 Arcavacata di Rende, Cosenza, Italy

Full list of author information is available at the end of the article

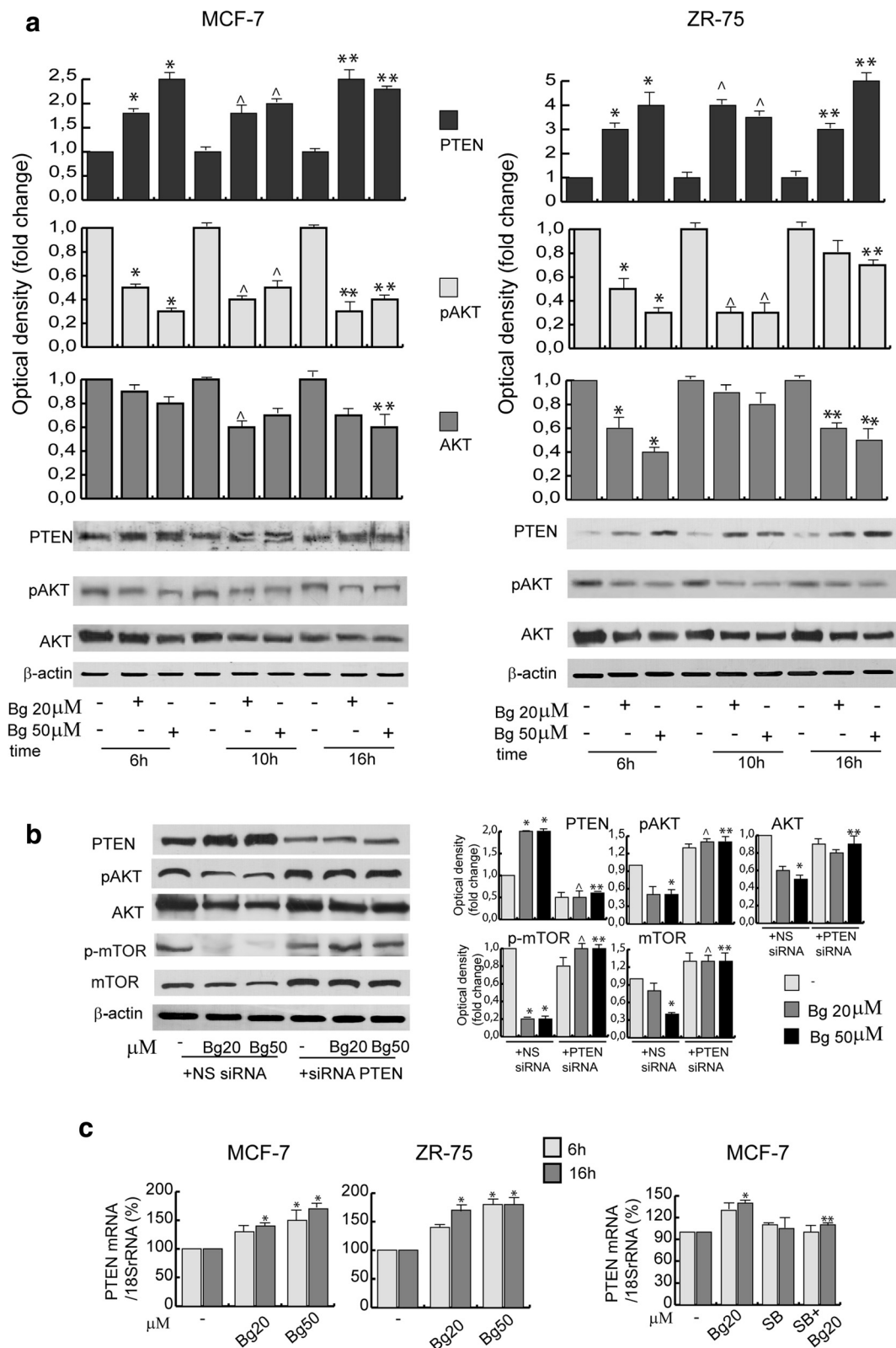


Fig. 1 (See legend on next page.)

(See figure on previous page.)

Fig. 1 Bergapten-regulates PTEN protein and mRNA levels in breast cancer cells. **a** Western blot analysis of PTEN, p-AKT and AKT in MCF-7 and ZR-75 breast cancer cells treated with vehicle (–) or Bg 20 μ M or Bg 50 μ M at different times as indicated. β -actin was used as loading control. Autoradiographs show the results of one representative experiment. Columns, are mean of three independent experiments in which band intensities were evaluated in terms of optical density arbitrary units and expressed as fold change over vehicle, which was assumed to be 1; bars, SD; * $P < 0.05$ vs 6 h vehicle. $\wedge P < 0.05$ vs 10 h vehicle. ** $P < 0.05$ vs 16 h vehicle. **b** Western blot analysis of PTEN, p-AKT, AKT, p-mTOR and mTOR in MCF-7 cells transfected with non specific (NS) or targeted against PTEN siRNA treated with vehicle (–) or Bg 20 μ M or Bg 50 μ M for 16 h. Autoradiographs show the results of one representative experiment. Columns, are mean of three independent experiments in which band intensities were evaluated in terms of optical density arbitrary units and expressed as fold over vehicle, which was assumed to be 1; bars, SD; * $P < 0.05$ vs NS siRNA vehicle. $\wedge P < 0.05$ vs NS siRNA Bg 20 μ M. ** $P < 0.05$ vs NS siRNA Bg 50 μ M. **c** Real-time PCR assay of PTEN mRNA expression in MCF-7 and ZR-75 cells treated with vehicle (–), Bg 20 μ M, Bg 50 μ M (*left panel*) and/or p38MAPK inhibitor SB203580 (SB 10 μ M) (*right panel*). 18S rRNA was determined as control. Columns are the mean of three independent experiments each in triplicate; bars, SD; * $P < 0.05$ vs vehicle treated cells. ** $P < 0.05$ vs Bg 20 μ M

attention as antitumor agents [6, 7]. In this regard coumarin-derivate compound 5-methoxypsoralen (Bergapten, Bg) has been shown to be antiproliferative and protective against various types of breast cancer cells [8, 9], although limited information of molecular mechanism of action is still available.

In particular, photo-activation of psoralen with UVA irradiation, used in the treatment of proliferative skin disorders, exerts antitumor effects in models of human breast cancer that overexpress the ErbB2 receptor tyrosine kinase oncogene, through a mechanism mediated by inhibition of ErbB2 signaling [10]. Furthermore, we recently reported that Bg, independently by its photo-activation, generates membrane signaling pathways able to address apoptotic responses in breast cancer cells [9]. Besides, the Bg in Tamoxifen-sensitive and Tamoxifen-resistant breast cancer cells can act as estrogen receptor alpha down-regulator, through a process involving the SMAD4 protein [8].

In the present study we provide evidence that Bg evokes an autophagic phenotype associated with an anti-survival response in breast cancer cells. These effects are mediated by the up-regulation of PTEN expression due to the activation of p38MAPK/NF- κ B signaling.

Results

Bergapten upregulates PTEN expression and PTEN gene promoter activity in MCF-7 and ZR-75 breast cancer cells

The PI3K is one of the most important pathway in cancer cells for the integration of different functions, including cellular metabolism, differentiation, and survival. We have previously reported [11] that Bg was able to decrease the PI3K activity, thus addressing apoptotic responses in breast cancer cells. Based on these promising initial data, we investigated if the drug was capable to influence the PI3K inhibitor PTEN and its downstream effector Akt.

As shown in the Fig. 1, Bg treatment, from 6 to 16 h (h), induces a significant increase of PTEN expression in terms of protein (Fig. 1a, b) and mRNA content (Fig. 1c) in both MCF-7 and ZR-75 cells. As presumed, pAkt, AKT and p-mTOR, m-TOR expression levels were reduced by

Bg treatment and this effect was specifically mediated by PTEN. Indeed, addition of a PTEN-targeting siRNA which resulted in reduction of the correspondent protein levels (Fig. 1b), clearly counteracted the Bg -dependent down-regulation, addressing the involvement of the oncosuppressor protein in mediating Bg effects.

To further investigate the molecular basis for regulation of PTEN gene expression by Bg, we transfected the full length of the PTEN promoter gene spanning from –2927 to –160 bp (pGL3-2768) previously described [12, 13] into MCF-7 and ZR-75 cells. Interestingly, the results in Fig. 2a *right panel* indicate that 20 μ M Bg significantly transactivated the pGL3-2768 construct in both cell types.

In order to identify the region of PTEN promoter responsible for Bg -induced transactivation we analyzed the activity of a series of PTEN promoter deleted constructs (Fig. 2a, *left panel*) previously described as an useful tool to study the regulation of PTEN expression [12, 13]. As revealed in Fig. 2a the promoter transactivation upon Bg was observed only in the deleted construct pGL3-612 indicating that the region between –1398 to –1118 bp was necessary for the up-regulation of PTEN promoter activity produced by Bg stimulation. Sequence analysis, showed that this region contains DNA motif able to bind NF- κ B, that accounts for promoter responsiveness to Bg [9]. Since NF- κ B transcription factor is a potential effector of Bg action [9] which induces p38MAPK activation as we observed in Additional file 1: Figure S1A, we wondered whether PTEN up-regulation, might be dependent of this phosphorylative pathway. In MCF-7 cells, pre-treated for 2 h with the p38MAPK inhibitor SB203580 (10 μ M), known to block the kinase activities of p38 isoforms, the Bg-induced up-regulation of PTEN mRNA (Fig. 1c), protein levels (Additional file 1: Figure S1B) and gene promoter activity (Fig. 2a) were abrogated.

To further assess NF- κ B involvement in the Bg -dependent induction of PTEN gene activity, we performed site directed mutagenesis to alter NF- κ B motif. As shown in Fig. 2b, the activity of the mutated construct was unaffected by Bg treatment. Besides

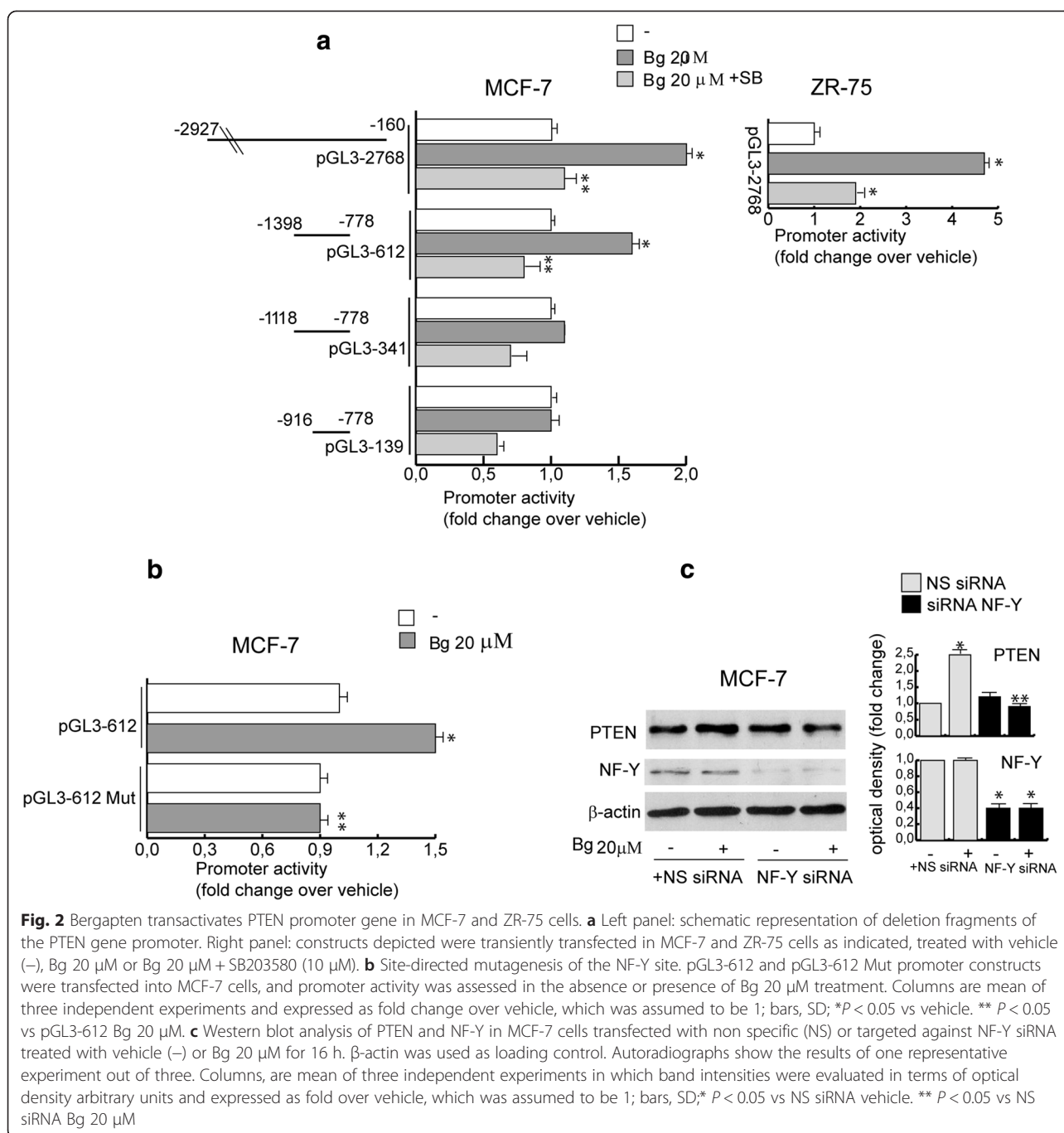


Fig. 2 Bergapten transactivates PTEN promoter gene in MCF-7 and ZR-75 cells. **a** Left panel: schematic representation of deletion fragments of the PTEN gene promoter. Right panel: constructs depicted were transiently transfected in MCF-7 and ZR-75 cells as indicated, treated with vehicle (-), Bg 20 μM or Bg 20 μM + SB203580 (10 μM). **b** Site-directed mutagenesis of the NF-Y site. pGL3-612 and pGL3-612 Mut promoter constructs were transfected into MCF-7 cells, and promoter activity was assessed in the absence or presence of Bg 20 μM treatment. Columns are mean of three independent experiments and expressed as fold change over vehicle, which was assumed to be 1; bars, SD; * $P < 0.05$ vs vehicle. ** $P < 0.05$ vs pGL3-612 Bg 20 μM. **c** Western blot analysis of PTEN and NF-Y in MCF-7 cells transfected with non specific (NS) or targeted against NF-Y siRNA treated with vehicle (-) or Bg 20 μM for 16 h. β-actin was used as loading control. Autoradiographs show the results of one representative experiment out of three. Columns, are mean of three independent experiments in which band intensities were evaluated in terms of optical density arbitrary units and expressed as fold over vehicle, which was assumed to be 1; bars, SD; * $P < 0.05$ vs NS siRNA vehicle. ** $P < 0.05$ vs NS siRNA Bg 20 μM

specific NF-Y siRNA substantially counteracted Bg effects on PTEN expression (Fig. 2c) addressing how this factor is fundamental for Bg action.

Bergapten-action in breast cancer cells induces the autophagic process

Since PTEN through inhibition of PI3K/Akt pathway modulates autophagy, we next investigated the Bg -action on the expression of the specific autophagy master regulator Beclin1, having a prevalent role in the early phases of

the process. As shown in Fig. 3a Bg treatment increased Beclin1 levels and this effect was specifically mediated by PTEN, indeed in MCF-7 cells transfected with a specific PTEN-siRNA, Bg was no longer able to induce the up-regulation of Beclin1 expression. In both breast cancer cell types, Bg induced the expression of other strictly related proteins such as PI3KIII, UVRAG, and AMBRA which cooperate to the autophagosome formation (Fig. 3b).

When autophagy is activated, PI3KIII causes lipidation of LC3-I (microtubule-associated protein 1 light chain 3)

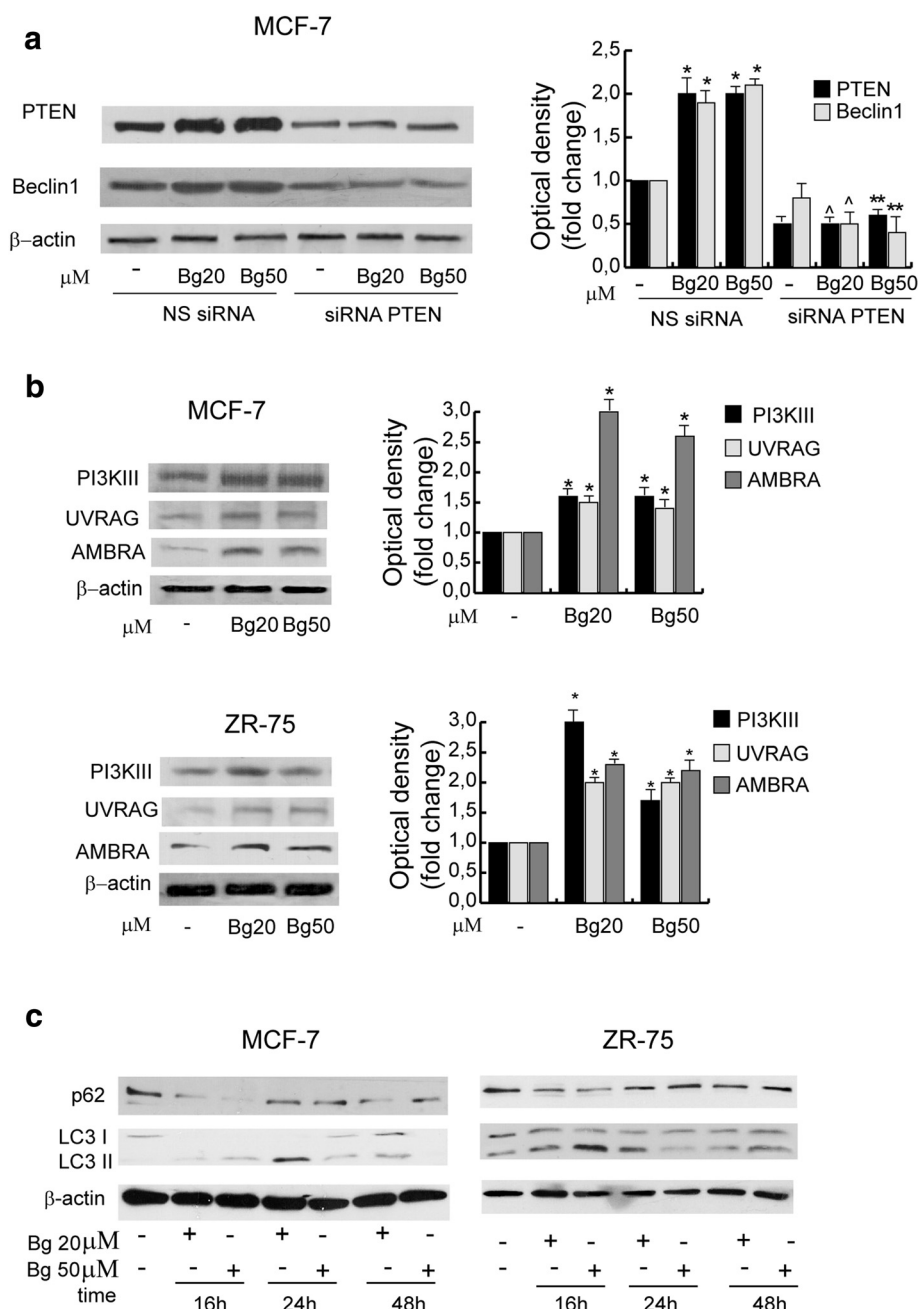


Fig. 3 Bergapten modulates the expression of proteins involved in autophagy process in MCF-7 and ZR-75 cells. **a** Western blot analysis of PTEN (also showed in Fig. 1b) and Beclin1 in MCF-7 cells transfected with non specific (NS) or targeted against PTEN siRNA treated with vehicle (-), Bg 20 µM or Bg 50 µM for 16 h. β-actin was used as loading control. Autoradiographs show the results of one representative experiment. Columns, are mean of three independent experiments in which band intensities were evaluated in terms of optical density arbitrary units and expressed as fold change over vehicle, which was assumed to be 1; bars, SD; **P* < 0.05 vs NS siRNA vehicle. ^ *P* < 0.05 vs NS siRNA Bg 20 µM. ** *P* < 0.05 vs NS siRNA µM. **b** Western blot analysis of PI3KIII, UVRAG and AMBRA expression in MCF-7 and ZR-75 cells treated for 16 h with vehicle (-), Bg 20 µM, Bg 50 µM. Columns, are mean of three independent experiments in which band intensities were evaluated in terms of optical density arbitrary units and expressed as fold over vehicle, which was assumed to be 1; bars, SD; **P* < 0.05 vs vehicle treated cells. **c** Time course study. Western blot analysis of p62 and LC3 expression in MCF-7 and ZR-75 cells treated for different times as indicated with vehicle (-), Bg 20 µM, Bg 50 µM. Autoradiographs show the results of one representative experiment out of three

which alters LC3-I electrophoretic mobility referred as LC3-II [14]. Treatment of MCF-7 and ZR-75 cells with Bg resulted in the conversion of LC3-I to LC3-II after 16 h which persisted until 24 h under Bg 20 μ M and not more evident at 48 h (Fig. 3c). Accordingly, treatment with Bg for 16 h resulted in a transient decrease in levels of autophagic cargo receptor p62, marker of degradation via the lysosomes during autophagy.

LC3-GFP, acridine orange assay and transmission electron microscopy (TEM) revealed formation of autophagosomes in Bergapten-treated breast cancer cells

We next studied the pattern of subcellular localization of LC3 which re-localizes from the microtubules to autophagosomal membranes. MCF-7 cells were transiently transfected with an LC3-GFP expression vector and subjected to fluorescence microscopy. After 16 h treatment, Bg induced LC3-GFP re-localization and concentration into prototypical autophagic puncta (Fig. 4a).

The autophagic process was also monitored through acridine orange assay that labels acidic vesicular organelles (AVOs) bright red. MCF-7 and ZR-75, treated for 16 h with 20 and 50 μ M Bg were stained with acridine orange and analyzed through FACS. As shown in Fig. 4b in MCF-7 cells the red fluorescence increased from 0.35 % (control) to 8.5 % (20 μ M Bg) and 44.5 % (50 μ M Bg). Analogously, in ZR-75 cells (Fig. 4b) the percentage of red positive cells increased from 1.42 % (control) to 7.7 % (20 μ M Bg) and 29.2 % (50 μ M Bg) respectively indicating AVO accumulation. To validate the involvement of NF-Y on autophagic phenotype, MCF-7 cells were treated with a specific NF-Y siRNA which substantially reduced the percentage of red positive cells after Bg exposure compared to MCF-7 transfected with NS siRNA (Fig. 4c).

To further investigate the occurrence of a Bg-dependent autophagic phenotype we used transmission electron microscopy (TEM). As shown in Fig. 5, control cells exhibited normal nuclei with uniform and finely dispersed chromatin, surrounded by cytoplasm with normal appearing mitochondria (panels a, b). 20 μ M Bg-treatment for 16 h resulted in the accumulation of autophagic vacuoles (panels c, d and e). Particularly, autophagy was clearly evidenced at 50 μ M Bg treated for 16 h (panels f, g, h). Similar results, although in a lesser extent were obtained for ZR-75 cells (data not shown).

Autophagy favors the inhibition of breast cancer cell survival after Bergapten stimulus

To comprehend if the autophagic phenotype evoked by Bg treatment could favor or delay breast cancer cell death, we analyzed the influence of autophagy on cell survival after different times of Bg addition. Our results show that both MCF-7 and ZR-75 cells exposed to Bg

exhibited a significant loss of cell survival (Fig. 6), especially under Bg 50 μ M. Interestingly co-treatment with the autophagy inhibitor 3-MA effectively counteracted these inhibitory effects clearly suggesting that autophagy could early determine the inhibition of cell viability due to Bg stimulus. Cotreatment with the caspase inhibitor ZVF was ineffective at 16 h, while it counteracted the Bg action at 48 h of stimulation, indicating that apoptosis influences cell viability later respect to autophagy.

We also observed that pre-treatment of MCF-7 cells with the autophagy inhibitor 3-MA counteracted the appearance of DNA laddering after 24 h of Bg stimulus (data not shown).

The results, collectively, evidence that Bg activates the autophagy which supports the decline of cell survival through the later occurrence of apoptosis.

Discussion

The importance of the biological function of PTEN rises from its frequent mutations and deletions in human cancer. PTEN governs a plethora of cellular processes including survival, proliferation, and energy metabolism, by suppressing the PI3K/AKT/mTOR pathway [15–17]. Herein, we provided evidences that these molecular signals may be target of the natural product Bg, a psoralen compound that belongs to a group of furanocoumarins, which are found in a variety of fruits and vegetables. On the basis of our previous data demonstrating that Bg in breast cancer cells is able to negatively affect the PI3K/AKT signaling, here we found that this may occur through PTEN, the main negative regulator of this pathway. Our study addresses how Bg, by inducing PTEN expression, produces autophagy in breast cancer cells. Thus we propose that PTEN might be one of the signaling protein through which Bg acts to affect breast cancer cell survival.

For instance this emerges from our data showing that the silencing of this gene was able to abrogate the down-regulation of p-AKT/p-mTOR triggering autophagic process under Bg exposure.

It is worth to mention how the lowering of AKT and mTOR protein levels just rely on the degradative process of proteins along with autophagy.

We deepen the molecular mechanism through which Bg might bring to PTEN elevation by performing transient transfection experiments with different PTEN promoter constructs, showing that the stimulatory effect induced by Bg on this gene was mediated by a region containing NF-Y binding site. In fact, site-direct mutagenesis of this element completely reversed the Bg induced up-regulation of PTEN promoter activity. Furthermore NF-Y silencing counteracted Bg effects on PTEN expression.

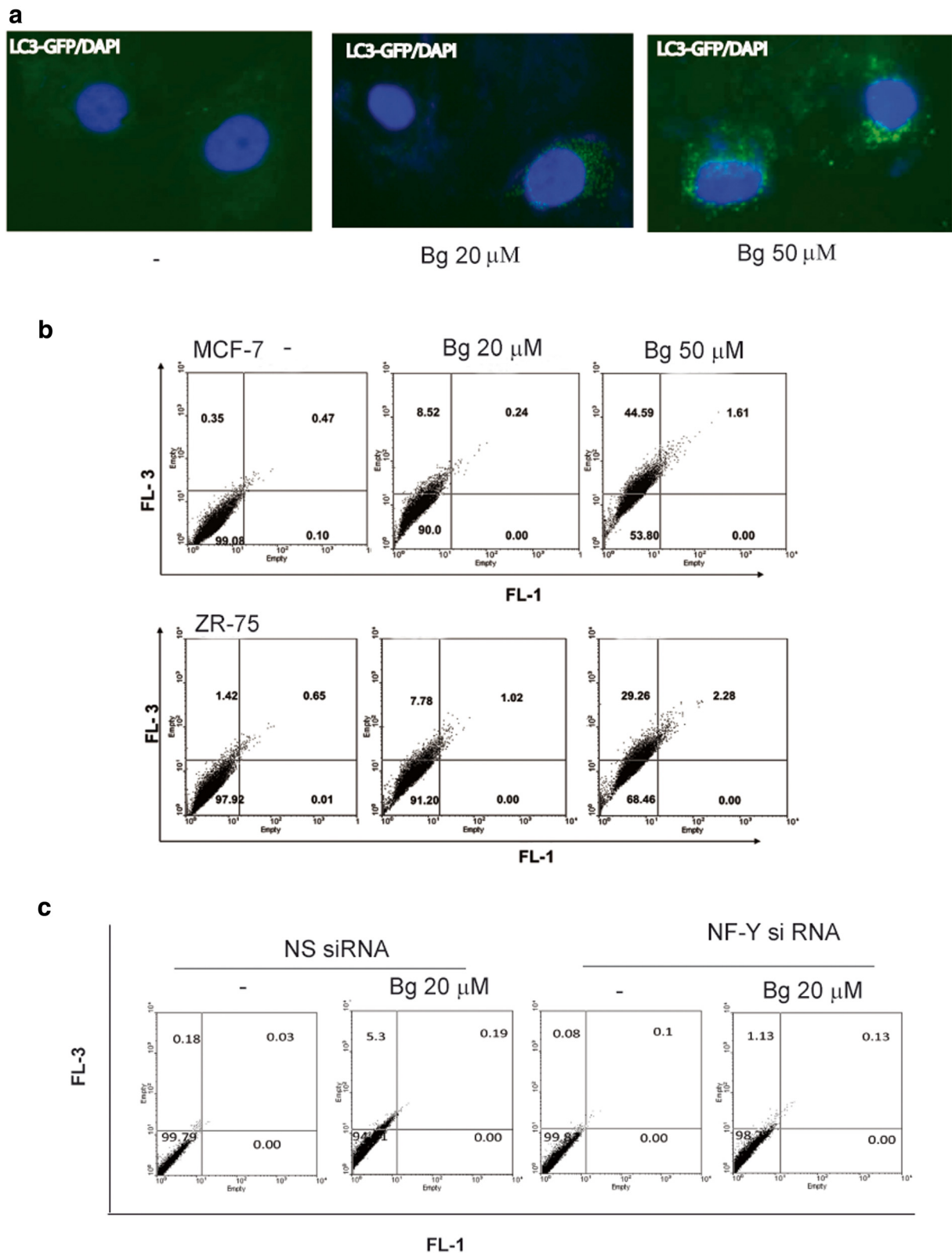


Fig. 4 (See legend on next page.)

(See figure on previous page.)

Fig. 4 Bergapten treatment increases autophagosome formation in MCF-7 and ZR-75 cells. **a** MCF-7 cells were transiently transfected with LC3-GFP and treated with vehicle (–) or with Bg 20 μ M or Bg 50 μ M for 16 h. **b** MCF-7 and ZR75 cells treated with vehicle (–) or with Bg 20 μ M or Bg 50 μ M for 16 h, were incubated with acridine orange and fluorescence was analyzed by flow cytometry. **c** MCF-7 transfected with non specific (NS) or targeted against NF-Y siRNA treated with vehicle (–) or with Bg 20 μ M for 16 h. Images show the results of one representative experiment out of three

Whereas in our previous paper we have shown that the transcription factor NF-Y mediates Bg action, herein we further confirmed the crucial role of the activation of NF-Y, via p38MAPK signaling as the main axis through which Bg is able to maintain the PTEN promoter transactivation as well as mRNA and protein increase. NF-Y regulates transcription of various genes related to the cell cycle and various human diseases, as it is required for the recruitment of RNA polymerase II to permit transcriptional activation [18].

Besides, recent studies reported that p38-dependent stress response can drive the autophagy process [19–21]. Interestingly we evidenced the appearance of an autophagic phenotype by Bg treatment as revealed by fluorescence microscopy of LC3-GFP in breast cancer cells together with an increase of different key hallmarks of the autophagic process such as Beclin 1, PI3K III, UVRAG and Ambra1. Moreover our results reveal lipidation of LC3 and the reduction of p62 along with the activation of autophagy. Both markers further change after 24–48 h of Bg stimulus addressing the incipient appearance of apoptosis [8, 9].

Thus the biological outcome of the functional axis Bg/p38MAPK/NF-Y/PTEN is represented by the appearance of an early autophagic phenotype which is crucial for the later inhibition of breast cancer cell survival since it appears effectively counteracted in the presence of a specific autophagy inhibitor 3-MA in both cell types. We retain that Bg induced autophagy represents a preliminary event that pushes breast cancer cells towards apoptosis as late response, as evidenced by the effects of the caspase inhibitor ZVF which counteracted the inhibitory action of Bg on cell viability but subsequently to 24 h of treatment [8]. In other words the present paper highlights how, in a shorter time, Bg triggering autophagy may create the susceptibility to cell death. For instance, some types of cancers exhibit autophagic changes after treatments with irradiation and chemotherapeutic drugs [22–26] as adaptative response to protect organisms during periods of enhanced cellular distress.

Several phytoproducts such as the coumarins, have shown to inhibit cancer cell proliferation inducing apoptotic cell death [27, 28]. Furthermore, in vitro exposure of cancer cells to natural products resveratrol and the B-group soya-saponins addresses

autophagic process [29–31] and in the human cervical carcinoma cell line it has been reported that the furanocoumarin imperatorin, alone or in combination with cisplatin, is mainly an autophagy inducer in these cells [32].

Whether autophagy is a death-induced mechanism or a protective effort for cellular survival is still a controversy [33, 34]. Most likely, depending on cellular type, functional status, microenvironment and therapeutic agents, the persistence over time of autophagy with the increases of cellular self-degradation, could promote apoptosis.

Conclusions

Thus, on the basis of our data, we can suggest that autophagy precedes cell death demonstrating that p38MAPK/NF-Y/PTEN represents the signaling pathway driving the appearance of the morpho-functional features of autophagy under Bg stimulus. These effects are prevented in the presence of specific NF-Y siRNA as monitored by flow cytometry in MCF-7 cells.

In summary, our results contribute to identify PTEN as a key target of Bg action in breast cancer cells for the control of survival and autophagy. PTEN is transcriptionally regulated by Bg through the involvement of NF-Y transcription factor. Treatment of cells enhances the expression of Beclin1 and PI3K III, pivotal factors in the formation of a lipid kinase complex which in turn allow the recruitment and shuttling of UVRAG and AMBRA, thus contributing to the generation of the phagophore. These findings add further insights on the mechanism of action of Bg and address how dietary phytochemical compounds may be implemented in the novel strategies for breast cancer treatment.

Materials and methods

Materials

5-Methoxypsoralen or Bergapten (Bg), aprotinin, leupeptin, phenylmethylsulfonyl fluoride (PMFS), sodium orthovanadate, the known inhibitor of autophagy 3-Methyladenine (3MA) were purchased from Sigma Chemical (Milan, Italy). The specific caspases inhibitor Z-VAD-FMK (ZVF) was from R&D Systems (Milan, Italy). Antibodies used in this study were from Santa Cruz Biotechnology (Santa Cruz, CA)

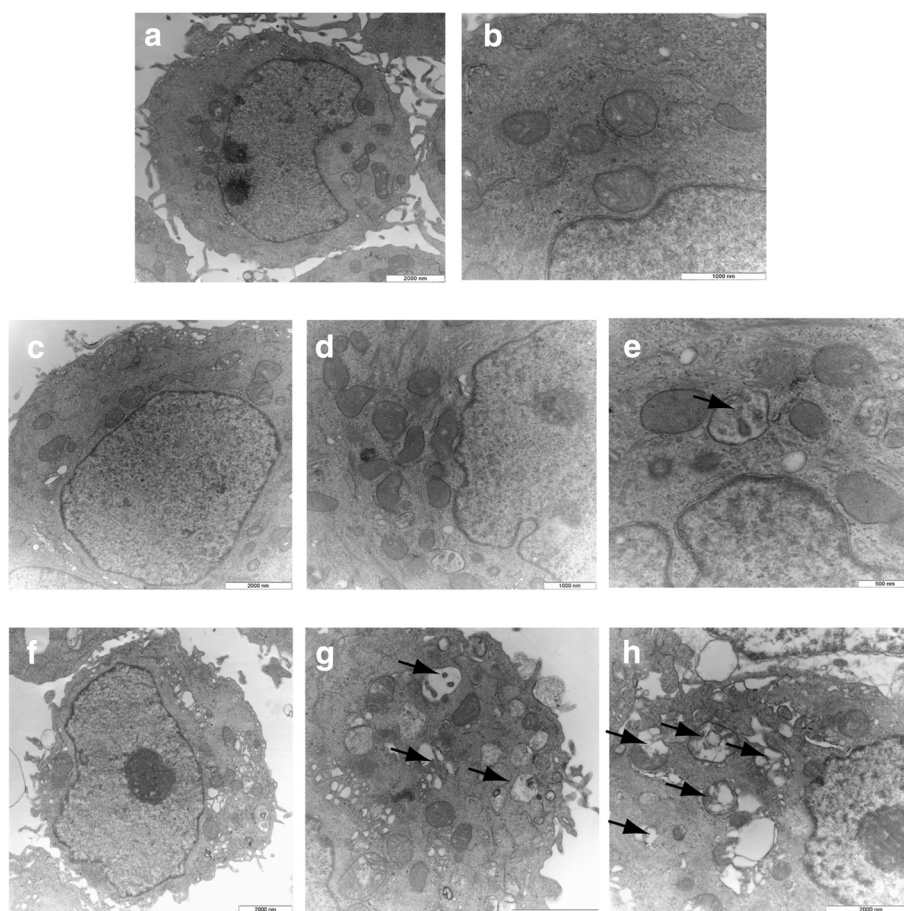


Fig. 5 Bergapten treatment evokes an autophagic phenotype in MCF-7. TEM analysis, top panels: untreated MCF7 cells (**a, b**). Bottom panels: Bg 20 μ M (**c, d, e**) and Bg 50 μ M (**f, g, H**) treated cells. Morphologic findings characteristic of autophagy are enlarged to highlight the autophagic bodies indicated by the arrows (original magnification: \times 10,000). The figure shows the results of one representative experiment repeated at least three times

except SQSTM1/p62 and PhosphomTOR (Ser2448) from Cell Signalling (Danvers, MA).

Plasmids

The firefly luciferase reporter plasmid containing the full-length of the PTEN promoter region pGL3-2768 (-2927/-160) and the different deletion constructs pGL3-612 (-1389/-778), pGL3-341 (-1118/-778), pGL3-139 (-916/-778) gifts from Prof. Xi-Liang Zha, (Shanghai Medical College, Fudan University, Shanghai) [12, 13]. The Renilla luciferase expression vector pRL-TK (Promega, Milan, Italy) was used as a transfection standard. GFP-LC3 Expression Vector #CBA-401 was from Cell Biolabs, Inc. (San Diego, CA).

Cell culture

Authenticated human breast cancer cells MCF-7 and ZR75-1 (ZR-75) (American Type Culture Collection-ATCC) were acquired in 2010, stored according to supplier's instructions and used within 4 months

after frozen aliquots resuscitations. Both cell lines were maintained in DMEM/F-12 medium containing 5 % fetal calf serum (5 %FCS), 1 % L-glutamine, 1 % Eagle's nonessential amino acids and 1 mg/ml penicillin/streptomycin in a 5 % CO₂ humidified atmosphere. Cells were cultured in phenol red-free DMEM, 0.5 % BSA and 2 mM L-glutamine (serum-free medium), for 24 h (h) before each experiment. Bg stimulation was performed in DMEM/F12 containing 5 % charcoal-treated fetal calf serum. MCF-7 cells express endogenous PTEN, while ZR-75 cells contain a hemizygous deletion of PTEN and a missense mutation in the other allele [35]. The Bg concentrations were chosen on the basis of our previous studies [8, 9].

Western blotting

Total protein extracts were obtained as previously described [36]. Proteins were resolved on a 10 % sodium dodecyl sulfate-polyacrylamide gel, transferred to a

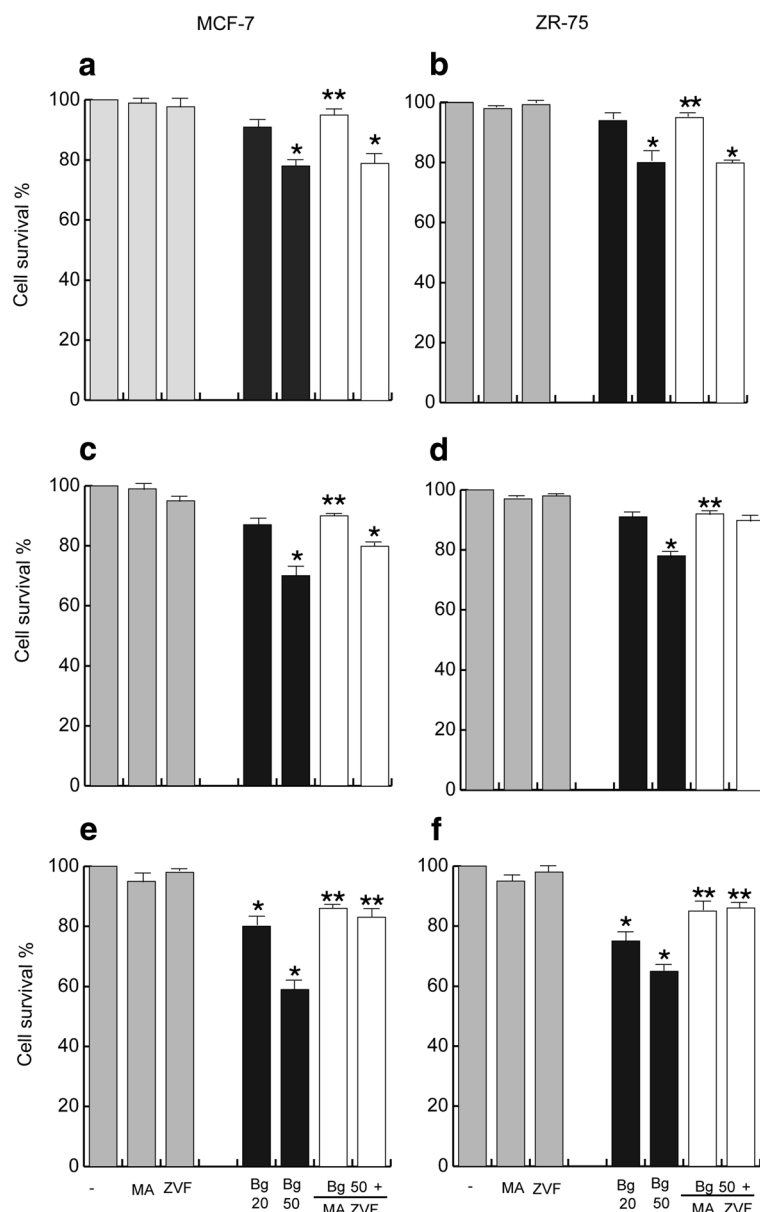


Fig. 6 Bergapten treatment reduces cell viability in MCF-7 and ZR-75 cells. MTT assay in MCF-7 and ZR-75 cells treated for 16 h (panel **a, b**), 24 h (panel **c, d**), 48 h (panel **e, f**) with vehicle (–), Bg 20 μ M, Bg 50 μ M, or pre-treated for 4 h respectively with 5 mM 3-MA (3-Methyladenine) or 10 μ M ZVF (Z-VAD-fmk) as indicated. Columns are mean of three independent experiments and expressed as % over vehicle, which was assumed to be 100 %; bars, SD; * $P < 0.05$ vs vehicle. ** $P < 0.05$ vs Bg 50 μ M

nitrocellulose membrane, probed overnight at 4 °C with the indicated antibodies. β -actin was used as loading control.

Reverse transcription and real-time PCR

Cells were treated as indicated and processed as described [37] The primers were: 5'CCACCACAGCTAGAATTATC3' (PTEN forward); 5'ATCTGCACGCTCTATACCTGC3' (PTEN reverse); 5'-GGCGTCCCCCAACTTC

TTA-3' (18S forward) and 5'-GGGCATCACAGACCTGTTATT-3' (18S reverse).

Transfections and luciferase assays

Transfections were done as previously described [38] using Fugene 6 reagent (Roche Diagnostics, Milan, Italy). Luciferase activity was measured with the Dual Luciferase kit (Promega, Milan, Italy).

Site-directed mutagenesis

Mutagenesis was performed on pGL3-612 (-1389/-778) of the PTEN promoter by PCR. The sequence for the sense primer was: 5'-ACGACCCCATCTCAGCTTagtcCATCAGTCCTCCACC-3'. The amplified DNA fragment was digested and ligated into pGL3-basic vector. Mutation was confirmed by DNA sequencing.

Lipid-mediated transfection of siRNA Duplexes

RNA oligonucleotide nonspecific (NS) or directed against PTEN and NF-Y were purchased from Invitrogen (Paisley, UK). Cells were transfected using Lipofectamine 2000 reagent (Invitrogen, Paisley, UK) as previously reported [38] according to the manufacturer's instructions and then treated as indicated.

MTT assay

Cells (3×10^4 cells/mL) were plated in 24-well plates and serum-starved for 24 h before the addition of treatment. The MTT assay was performed as briefly described: 100 μ L of MTT (2 mg/mL) (Sigma Aldrich, Milan, Italy) were added to each well, and the plates were incubated for 2 h at 37 °C. Then, 500 μ L of DMSO were added. The absorbance was measured with the Ultraspec 2100 Prospectrophotometer (Amersham-Biosciences, Milan, Italy) at 570 nm.

GFP-LC3 fluorescence

LC3 translocation was detected using the green fluorescent protein (GFP)-fused LC3 construct (Cell Biolabs, Inc. San Diego, CA). Briefly, cells were seeded in 6 well plates contained glass coverslips and allowed to attach overnight. 7 μ g of LC3-GFP expression plasmid were transfected using Fugene 6 reagent (Roche Diagnostics, Milan, Italy). 6 h after transfection, the cells were treated with vehicle or 20 μ M or 50 μ M Bg for 16 h. The coverslips with attached cells were stained with the blue-fluorescent DAPI for nuclear stain. The excess buffer was removed and the coverslips were mounted. Fluorescence analysis was carried out on an OLYMPUS BX51 microscope. Images are representative of three different experiments.

FACS detection of acidic vesicular organelles

Acidic vesicular organelles (AVOs) were detected and quantified after vital staining with acridine orange to monitor autophagic phenotype [24]. Following treatment, cells were stained with 0.5 μ g/ml acridine orange for 15 min at 37 °C. Cells were then trypsinized and collected in phenol-red free medium. Green (510–530 nm) and red (>650 nm) fluorescence emission from cells was measured with a Fluorescence Activated Cell Sorter (FACS) using CellQuest software.

Transmission Electron Microscopy (TEM)

TEM was conducted as previously described [39]. Cells were fixed in 3 % glutaraldehyde solution in 0.1 M phosphate buffer (pH. 7.4) for 2 h. Then the samples were post-fixed in osmium tetroxide (3 %), dehydrated in graded acetone and embedded in Araldite (Fluka, Buchs, Switzerland). Ultrathin sections were collected on copper grids and contrasted using both lead citrate and uranyl acetate. The grids were examined in a "Zeiss EM 10" electron microscope.

Statistical analysis

Data were analyzed by Student's *t* test using the Graph-Pad Prism 4 software program.

Additional file

Additional file 1: Figure S1. (A) Time course study. Western blot analysis of p-p38 and p38 expression in MCF-7 and ZR-75 cells treated as indicated with vehicle (-), Bg 20 μ M, Bg 50 μ M. Autoradiographs show the results of one representative experiment out of three. (B) Western blot analysis of PTEN in MCF-7 treated with vehicle (-), Bg 20 μ M and/or p38MAPK inhibitor SB203580 (SB 10 μ M).

Competing interests

The authors declare that they have no competing interests.

Authors' contributions

FDA, SA, MLP design the experiments. SA conception of the project, analysis of data, revising critically the manuscript. FDA and MLP drafted the manuscript. CM and CG carried out the siRNA silencing and performed part of the WB. MS prepared the cell cultures and performed MTT, RT-PCR and LC3-GFP experiments. IP performed the TEM analysis. LM assisted with WB and statistical analysis, FG, AN prepared the samples and carried out the FACS analysis. SA supervised the manuscript and has given the critical contribution to the experimental study. All authors read and approved the final manuscript.

Acknowledgments

This work was supported by Progetti di Ricerca di Interesse Nazionale (PRIN), Ministero Istruzione Universita' e Ricerca (MIUR) (grant number 20085Y7XT5); and Associazione Italiana Ricerca sul Cancro (AIRC) (grant number IG11595 and IG15738).

Author details

¹Department of Pharmacy, Health and Nutritional Sciences, University of Calabria, 87036 Arcavacata di Rende, Cosenza, Italy. ²Health Center, University of Calabria, 87036 Arcavacata di Rende, Cosenza, Italy. ³Department of Biology, Ecology and Earth Science (Di.B.E.S.T.), University of Calabria, 87036 Arcavacata di Rende, Cosenza, Italy.

Received: 25 September 2014 Accepted: 29 June 2015

Published online: 07 July 2015

References

- Chang JC, Hilsenbeck SG, Fuqua SA. Genomic approaches in the management and treatment of breast cancer. *Br J Cancer*. 2005;92:618–24.
- Yamada KM, Araki M. Tumor suppressor PTEN: modulator of cell signaling, growth, migration and apoptosis. *J Cell Sci*. 2001;114:2375–82.
- Piekarski J. Should we start routine assessment of expression of PTEN protein in patients with breast cancer? *J Oncol*. 2005;55:480–4.
- Blanco-Aparicio C, Renner O, Leal JF, Carnero A. PTEN, more than the AKT pathway. *Carcinogenesis*. 2007;28:1379–86.
- Lindmo K, Stenmark H. Regulation of membrane traffic by phosphoinositide 3-kinases. *J Cell Sci*. 2006;119:605–14.

6. De Amicis F, Perri A, Vizza D, Russo A, Panno ML, Bonofiglio D, et al. Epigallocatechin gallate inhibits growth and epithelial-to-mesenchymal transition in human thyroid carcinoma cell lines. *J Cell Physiol.* 2013;228:2054–62.
7. De Amicis F, Giordano F, Vivacqua A, Pellegrino M, Panno ML, Tramontano D, et al. Resveratrol, through NF- κ B/p53/Sin3/HDAC1 complex phosphorylation, inhibits estrogen receptor alpha gene expression via p38MAPK/CK2 signaling in human breast cancer cells. *FASEB J.* 2011;25:3695–707.
8. Panno ML, Giordano F, Rizza P, Pellegrino M, Zito D, Giordano C, et al. Bergapten induces ER depletion in breast cancer cells through SMAD4-mediated ubiquitination. *Breast Cancer Res Treat.* 2012;136:443–55.
9. Panno ML, Giordano F, Palma MG, Bartella V, Rago V, Maggiolini M, et al. Evidence that bergapten, independently of its photoactivation, enhances p53 gene expression and induces apoptosis in human breast cancer cells. *Curr Cancer Drug Targets.* 2009;9:469–81.
10. Xia W, Gooden D, Liu L, Zhao S, Soderblom EJ, Toone EJ, et al. Photo-activated psoralen binds the ErbB2 catalytic kinase domain, blocking ErbB2 signaling and triggering tumor cell apoptosis. *PLoS One.* 2014. doi:10.1371/journal.pone.0088983.
11. Panno ML, Giordano F, Mastroianni F, Palma MG, Bartella V, Carpino A, et al. Breast cancer cell survival signal is affected by bergapten combined with an ultraviolet irradiation. *FEBS Lett.* 2010;584:2321–6.
12. Han B, Dong Z, Liu Y, Chen Q, Hashimoto K, Zhang JT. Regulation of constitutive expression of mouse PTEN by the 5'-untranslated region. *Oncogene.* 2003;22:5325–37.
13. Ma DZ, Xu Z, Liang YL, Su JM, Li ZX, Zhang W, et al. Down-regulation of PTEN expression due to loss of promoter activity in human hepatocellular carcinoma cell lines. *World J Gastroenterol.* 2005;11:4472–7.
14. Wild P, McEwan DG, Dikic I. The LC3 interactome at a glance. *J Cell Sci.* 2014;127:3–9.
15. Shi Y, Paluch BE, Wang X, Jiang X. PTEN at a glance. *J Cell Sci.* 2012;125:4687–92.
16. Ueno T, Sato W, Horie Y, Komatsu M, Tanida I, Yoshida M, et al. Loss of Pten, a tumor suppressor, causes the strong inhibition of autophagy without affecting LC3 lipidation. *Autophagy.* 2008;4:692–700.
17. De Amicis F, Guido C, Santoro M, Lanzino M, Panza S, Avena P, et al. A novel functional interplay between progesterone receptor β and PTEN via Akt, modulates autophagy in breast cancer cells. *J Cellular Mol Med.* 2014. doi:10.1111/jcmm.12363.
18. Ly LL, Yoshida H, Yamaguchi M. Nuclear transcription factor Y and its roles in cellular processes related to human disease. *Am J Cancer Res.* 2013;3:339–46.
19. Lv XC, Zhou HY. Resveratrol protects H9c2 embryonic rat heart derived cells from oxidative stress by inducing autophagy: role of p38 mitogen-activated protein kinase. *Can J Physiol Pharmacol.* 2012;90:655–62.
20. Zhong W, Zhu H, Sheng F, Tian Y, Zhou J, Chen Y, et al. Activation of the MAPK11/12/13/14 (p38 MAPK) pathway regulates the transcription of autophagy genes in response to oxidative stress induced by a novel copper complex in HeLa cells. *Autophagy.* 2014;10:1285–300.
21. Cui Q, Tashiro S, Onodera S, Minami M, Ikejima T. Oridonin induced autophagy in human cervical carcinoma HeLa cells through Ras, JNK, and P38 regulation. *J Pharmacol Sci.* 2007;105:317–25.
22. Kanzawa T, Kondo Y, Ito H, Kondo S, Germano I. Induction of autophagic cell death in malignant glioma cells by arsenic trioxide. *Cancer Res.* 2003;63:2103–8.
23. Ellington AA, Berhow MA, Singletary KW. Inhibition of Akt signaling and enhanced ERK1/2 activity are involved in induction of macroautophagy by triterpenoid B-group soyasaponins in colon cancer cells. *Carcinogenesis.* 2006;27:298–306.
24. Bilir A, Altinoz MA, Erkan M, Ozmen V, Aydinler A. Autophagy and nuclear changes in FM3A breast tumor cells after epirubicin, medroxyprogesterone and tamoxifen treatment in vitro. *Pathobiology.* 2001;69:120–6.
25. Kanzawa T, Germano IM, Komata T, Ito H, Kondo Y, Kondo S. Role of autophagy in temozolomide-induced cytotoxicity for malignant glioma cells. *Cell Death Differ.* 2004;11:448–57.
26. Paglin S, Hollister T, Delohery T, Hackett N, McMahon M, Sphicas E, et al. A novel response of cancer cells to radiation involves autophagy and formation of acidic vesicles. *Cancer Res.* 2001;61:439–44.
27. Wang Y, Hong C, Zhou C, Xu D, Qu HB. Screening antitumor compounds psoralen and isopsoralen from *Psoralea corylifolia* L. seeds. *Evid Based Complement Alternat Med.* 2011;2011:363052.
28. Russo M, Spagnuolo C, Tedesco I, Russo GL. Phytochemicals in cancer prevention and therapy: truth or dare? *Toxins.* 2010;2:517–51.
29. Pipari Jr AW, Tan L, Boitano AE, Sorenson DR, Aurora A, Liu JR. Resveratrol-induced autophagocytosis in ovarian cancer cells. *Cancer Res.* 2004;64:696–703.
30. Ellington AA, Berhow M, Singletary KW. Induction of macroautophagy in human colon cancer cells by soybean B-group triterpenoid saponins. *Carcinogenesis.* 2005;26:159–67.
31. Chen ML, Yi L, Jin X, Liang XY, Zhou Y, Zhang T, et al. Resveratrol attenuates vascular endothelial inflammation by inducing autophagy through the cAMP signaling pathway. *Autophagy.* 2013;9:2033–45.
32. Jakubowicz-Gil J, Paduch R, Ulz Z, Badziul D, Glowinski K, Gawron A. Cell death in HeLa cells upon imperatorin and cisplatin treatment. *Folia Histochem Cytobiol.* 2012;50:381–91.
33. Sui X, Chen R, Wang Z, Huang Z, Kong N, Zhang M, et al. Autophagy and chemotherapy resistance: a promising therapeutic target for cancer treatment. *Cell Death Dis.* 2013. doi:10.1038/cddis.2013.350.
34. Guido C, Panza S, Santoro M, Avena P, Panno ML, Perrotta I, et al. Estrogen receptor beta (ER β) produces autophagy and necroptosis in human seminoma cell line through the binding of the Sp1 on the phosphatase and tensin homolog deleted from chromosome 10 (PTEN) promoter gene. *Cell Cycle.* 2012;11:2911–21.
35. Perren A, Weng LP, Boag AH, Ziebold U, Thakore K, Dahia PL, et al. Immunohistochemical evidence of loss of PTEN expression in primary ductal adenocarcinomas of the breast. *Am J Pathol.* 1999;155:1253–60.
36. Mauro L, Pellegrino M, De Amicis F, Ricchio E, Giordano F, Rizza P, et al. Evidence that estrogen receptor alpha interferes with adiponectin effects on breast cancer cell growth. *Cell Cycle.* 2014;13:553–64.
37. Rizza P, Barone I, Zito D, Giordano F, Lanzino M, De Amicis F, et al. Estrogen receptor beta as a novel target of androgen receptor action in breast cancer cell lines. *Breast Cancer Res.* 2014. doi:10.1186/bcr3619.
38. De Amicis F, Zupo S, Panno ML, Malivindi R, Giordano F, Barone I, et al. Progesterone receptor B recruits a repressor complex to a half-PRE site of the estrogen receptor alpha gene promoter. *Mol Endocrinol.* 2009;23:454–65.
39. Martinet W, Timmermans JP, De Meyer GR. Methods to assess autophagy in situ-transmission electron microscopy versus immunohistochemistry. *Methods Enzymol.* 2014;543:89–114.

Submit your next manuscript to BioMed Central and take full advantage of:

- Convenient online submission
- Thorough peer review
- No space constraints or color figure charges
- Immediate publication on acceptance
- Inclusion in PubMed, CAS, Scopus and Google Scholar
- Research which is freely available for redistribution

Submit your manuscript at
www.biomedcentral.com/submit

